



CE-4

APPENDIX J: ENVIRONMENTAL JUSTICE ANALYSIS
MEMORANDUM

Sharon Anton

From: Fair, Terri <TFair@indot.IN.gov>
Sent: Friday, October 20, 2023 11:02 AM
To: Kia Gillette; Sharon Anton
Cc: Passmore, Andrew D
Subject: Des. No. 1900162 - Improve 64 - Draft EJ Analysis
Attachments: Des 1900162_Improve 64_EJ Analysis_20231018_DRAFT.pdf

INDOT-Environmental Services Division (ESD) has reviewed the project information along with the Environmental Justice (EJ) Analysis for the above referenced project. With the information provided, the project may require minimal right-of-way, require no relocations, and would not disrupt community cohesion or create a physical barrier. With the information provided, INDOT-ESD would not consider the impacts associated with this project as causing a disproportionately high and adverse effect on minority and/or low-income populations of EJ concern relative to non-EJ populations in accordance with the provisions of Executive Order 12898 and FHWA Order 6640.23a. No further EJ Analysis is required.



TO: Drew Passmore, INDOT ES NEPA Review Team Lead

FROM: Kia Gillette, HNTB

DATE: October 16, 2023

SUBJECT: Des. No. 1900162, Improve 64 Environmental Justice (EJ) Analysis

I. Introduction

Under the Federal Highway Administration (FHWA) Order 6640.23A, FHWA and the project sponsor, as a recipient of funding from FHWA, are responsible to ensure that their programs, policies, and activities do not have a disproportionately high and adverse effect on minority or low-income populations. Per the current INDOT Categorical Exclusion Manual, an Environmental Justice (EJ) Analysis is required for any project that has two or more relocations or 0.5 acre of additional permanent right-of-way. The project will require acquisition of approximately 0.70 acre of additional right-of-way. This includes 0.26 acre of permanent right-of-way and 0.44 acre of temporary right-of-way. No relocations are expected. An EJ Analysis was completed because of the size of the project, location within the City of New Albany, and noise impacts identified in the noise analysis.

II. Project Description

The Improve 64 Project is located along I-64 and I-265 in Floyd County, Indiana. A portion of the project is in the City of New Albany. It is within Georgetown, Lafayette, and New Albany Townships, as shown on the Georgetown, Indiana and New Albany, Indiana USGS Topographic Quadrangles, in Sections 22, 27, 28, 29, 30, 31, 32, 33, and 34 in Township 2 South and Range 6 East, and Sections 2 and 3 in Township 3 South and Range 6 East.

The project will include work on sections of I-64, I-265, and US 150. The proposed project limits will extend northwest along I-64 for approximately 4.23 miles from the I-64 bridge over Main Street in New Albany to the US 150 interchange and along I-265 for approximately 1.75 miles north-northeast to approximately the Green Valley Road overpass. The total length of the project is approximately 5.98 miles. Approximately 0.70 acre of additional permanent and temporary right-of-way is anticipated to be acquired for this project.

The project is anticipated to include the following elements:

- Addition of a travel lane in each direction on I-64 from US 150 to 2,000 feet north of Cherry Street. In most areas, the additional lanes will be added within the median. Rock excavation will be necessary to construct the travel lanes in the median.
- Addition of an auxiliary lane on eastbound I-265 from I-64 to State Street and a travel lane on eastbound I-265 from I-64 to 4,000 feet east of State Street. The auxiliary lane will be added on the outside and the travel lane added within the median.
- Addition of one lane to all I-64/I-265 interchange ramps and one lane on the I-64 westbound exit ramp to US 150.



855-INDOT4U (1-855-463-6848)
INDOT4U.com

- Replacement and/or rehabilitation of pavement on I-64, I-265, and US 150.
- Relocation of the eastbound I-64 to eastbound I-265 ramp within the I-64/I-265 interchange. Construction of a new bridge on eastbound I-64 is required to accommodate the ramp relocation.
- Replacement, widening, and deck rehabilitation of bridges throughout the project area.
- Replacement of culverts and storm sewers, and construction of detention basins.
- Installation of guardrail and concrete barrier wall, as needed, along I-64.
- Replacement and addition of signage, lighting, ITS conduit, and pavement markings.
- Above-ground and underground utility relocations.
- Acquisition of new right-of-way and drainage easement(s).
- Construction of retaining walls at multiple locations to minimize right-of-way acquisition and to accommodate new traffic lanes added within the median along I-64 between US 150 and the Captain Frank Road overpass, east of the I-265/I-64 system interchange ramps.
- Construction of three noise barriers along I-64 and I-265 in accordance with INDOT's Traffic Noise Analysis Procedure (2022) (Noise Policy).

The maintenance of traffic (MOT) plan is to maintain the existing number of lanes of traffic in each direction on I-64 and I-265 to the maximum extent possible. Intermittent lane restrictions will be implemented on I-64 and I-265 during off peak hours. Quarry Road, Captain Frank Road, State Street, Cherry Street and Spring Street will be closed for short durations during construction of the bridges above, and construction of foundations adjacent to, those roadways. Interchange ramps at the I-64/US 150, I-64/I-265, and I-64/State Street interchanges will require short-term off-peak closures. Additional longer-term closures of ramps at I-64/Spring Street interchange will be necessary. Longer term single lane closures on State Street will also be necessary during I-265 bridge construction over State Street. These longer-term closures will likely last 4-6 months.

III. Purpose and Need

The need for the project is due to existing traffic congestion as demonstrated by poor levels of service (LOS) on the interstate and interchange components, and deteriorating pavement within the project area. The purpose of the project is to reduce congestion and improve the LOS on the interstate and interchange components, and address the deteriorated condition of the pavement.

IV. Population Characteristics

Potential EJ impacts are detected by locating minority and low-income populations relative to a reference population to determine if populations of EJ concern exist and whether there could be disproportionately high and adverse impacts to them. The reference population may be a county, city, or town and is called the community of comparison (COC). This project is located within Floyd County. However, since this interstate system is used by motorists in several surrounding counties, the COCs include Floyd County, City of New Albany, Clark County, the Town of Clarksville, Harrison County, the City of Jeffersonville, and Louisville-Jefferson County. The community that overlaps the project area is called the affected community (AC) and is compared to census block group information, depending on the availability of data. The ACs for this analysis are the census block groups immediately adjacent to the project area, as well as those in close proximity to account for potential broader changes associated with interstate access and travel patterns during construction. The COCs and ACs are shown in maps in Attachment A. All census block groups shown on the maps in Attachment A were identified as ACs.

An AC has a population of concern for EJ if the population is more than 50% minority or low-income or if the low-income or minority population is 125% of the COC. Data was also analyzed for Limited English

Proficiency (LEP) because it could inform public outreach efforts. Data from the 2016-2020 American Community Survey was obtained from the US Census Bureau Website <https://data.census.gov> on May 4, 2022, by HNTB. The data collected for low-income, minority and LEP populations within the AC are summarized in the tables in Attachment B.

Of the 122 census block groups analyzed, a total of 75 census block groups (61.5%) showed populations of EJ concern. They are highlighted in yellow in the tables in Attachment B. They include:

- Fourteen (14) census block groups showing only minority populations of concern.
- Twenty-two (22) census block groups showing only low-income populations of concern.
- Thirty-nine (39) census block groups showing both minority and low-income populations of concern.

The populations of EJ concern are primarily located in the developed areas of New Albany, Clarksville, and Louisville (Attachment A).

Using the same methodology described above, a total of 29 census block groups showed elevated LEP populations (Attachment A).

V. Public Outreach

The Improve 64 project has a robust public involvement plan which includes a website (Improve64.com), social media accounts, press releases, a Community Advisory Committee (CAC), EJ Working Group, and public information meetings. A public hearing will also be held once the environmental document is released for public involvement.

The EJ Working Group was established to better ensure organizations representing environmental justice populations, which do not historically participate in many transportation projects, are engaged in in-depth conversations and helping make decisions. On July 15, 2021, 25 organizations and individuals were invited to be included in the EJ Working Group and to participate in EJ Working Group meeting #1. EJ Working Group meeting #1 was held virtually via Microsoft Teams on August 3, 2021. Representatives from the Floyd County NAACP, Center for Neighborhoods, INDOT, FHWA, and the project team attended the meeting. The meeting included introductions, purpose of the meeting and role of the EJ Working Group, project overview, and discussion of the environmental study.

Maps showing census block groups with minority and low-income populations of EJ concern were shared at the meeting and the Floyd County NAACP and Center for Neighborhoods representatives indicated they appeared to be accurate. They also mentioned a high minority population in the Jefferson Gardens apartments. Concerns expressed during the meeting included the temporary closure of Cherry Street and possible impacts on Scribner Middle School. Participants also suggested including more west Louisville representatives on the EJ Working Group because many residents cross the Sherman Minton bridge to shop at stores and access destinations on State Street (such as the west Louisville YMCA, Louisville Mayor's office, community centers, schools, Louisville Urban League, TARC (regional transit agency), Housing Authority, and additional black churches such as Howard Chapel and Bethel Church). Participants indicated it is important to be transparent about closures and to be honest to build trust. The Floyd County NAACP and Center for Neighborhoods representatives stressed the importance of relying on trusted partners – community centers, churches, Urban League – for ways to engage EJ communities. Possible outreach events could include “Park Days” at Victory Park or Shelby Park, Harvest Homecoming, World Fest, KY State Fair, and job fairs. Americana Community Center, La Casita, Catholic Charities, the Mayor's

Office of Globalization, and St. Mary's Church in New Albany are good resources to reach out to the Hispanic population. Radio was also suggested as an outreach tool. Meeting materials are in Attachment C.

In response to feedback provided during EJ Working Group meeting #1, 52 additional individuals and organizations, including schools, churches, community centers, and city representatives from west Louisville, were invited to participate in the EJ Working Group and meeting #2. The additional invitation included both phone calls and email invitations sent on July 27, 2022 with an invitation to a combined CAC and EJ Working Group meeting on August 9, 2022 at the Scribner Middle School. A flier for the upcoming public information meeting (in both English and Spanish) and previous meeting information was also included. Representatives from the New Albany/Floyd County Public Schools, Louisville Metro Government, City of New Albany Plan Commission, Ivy Tech, City of New Albany, St. Elizabeth Catholic Charities, Center for Neighborhoods, Floyd County Historian, New Albany City Engineer, INDOT, FHWA, and the project team attended the meeting. The meeting included introductions, project overview, discussion of the environmental review process, efforts made to engage communities with EJ concerns from meeting #1, anticipated schedule, and public comment period/public information meeting.

Discussion items included the potential to address traffic on I-265 outside the project limits, concerns over closing Cherry Street and Captain Frank Road at the same time and effects to neighborhood access. In addition, TARC (local transit agency) was recommended as a good resource to coordinate with regarding communicating with residents. Meeting attendees also suggested considering a possible dual left turn onto State Street from the I-265 interchange ramp, possible transit routes during MOT, and potentially including signage along the interstate about historic downtown. Historic properties within the project area and the status of the Section 106 consultation process were discussed. Meeting attendees recommended providing information about the project to stores on State Street, to local libraries, and community centers. Maps showing the census block groups with minority and low-income populations of EJ concern were reviewed and meeting attendees were asked if there were any missing areas. No additional areas were identified. Meeting attendees were also asked if public meeting information should be translated into other languages in addition to Spanish. Meeting attendees were not aware of other languages that would be helpful. Meeting materials are in Attachment C.

Public information meeting #1 was held on August 17, 2022 at the Scribner Middle School. Approximately 84 people attended. Several methods were used to advertise the meeting including: emailing fliers (in both English and Spanish) to EJ Working Group and CAC members to share; a public notice in the local newspaper; social media posts; a press release; mailing over 12,000 postcards with the public meeting and project website information to adjacent zip codes (including the elevated minority and low-income census block groups); and more than 1,500 hard-copy fliers were distributed to grocery stores, community centers, apartment complexes, and other locations within the community. Many of these locations that received hard copies of fliers were specifically mentioned during the EJ Working Group meetings and/or were within census block groups with minority and low-income populations of EJ concern. The meeting presentation provided an overview of the project, discussed the environmental review process, and included the anticipated project schedule. A factsheet and "Frequently Asked Questions" handouts were available at the meeting for attendees to take home. Project team staff were also available at informational boards to answer questions from the public.

A noise public information meeting was held on January 24, 2023, at the New Albany School's Educational Support Center. The purpose of the noise public meeting was to educate neighborhood residents on INDOT's Noise Policy and encourage benefited receptors to complete a survey on whether they were in

favor of a noise barrier at that location. Approximately 58 people attended the public meeting. Notice of the meeting was sent with the first round of noise barrier survey postcards, advertised on social media, and sent as a media advisory. All benefited receptors who were sent noise barrier survey postcards are located within census block groups with minority and low-income populations of EJ concern. The meeting presentation provided an overview of the project, discussed INDOT's Noise Policy, and provided information regarding possible noise barriers along I-64 and I-265. Meeting handouts were available in both English and Spanish. Project team staff were also available at informational boards to answer questions from the public. Meeting attendees could complete a noise barrier survey postcard and give to project team staff at the meeting.

VI. Benefits and Burdens

Once populations of EJ concern are identified, the next step is to determine if they are expected to experience a disproportionately high and adverse impact from the project. The FHWA and USDOT EJ Orders state that "disproportionately high and adverse" refers to an adverse effect that (1) is predominately borne by a minority population and/or a low-income population; or (2) will be suffered by the minority population and/or low-income population and is appreciably more severe or greater in magnitude than the adverse effect that will be suffered by the non-minority population and/or non-low-income population.

The following benefits and burdens have been identified as potential considerations in determining whether the populations of EJ concern will experience disproportionately high and adverse impacts from the project.

Benefits

- Reduced travel time and congestion – The area currently experiences congestion due to limited capacity of the roadway. Recurring freeway congestion on both I-64 between SR 62/64 and the Indiana/Kentucky state line and I-265 between I-64 and Grant Line Road results in peak period travel speeds below 20-mph and intermittent queuing with a high frequency of rear end and sideswipe crashes. Recurring congestion occurs on eastbound I-64 during typical weekday morning peak periods, beginning at the high-volume US 150 entrance ramp. On westbound I-64, congestion occurs during the typical weekday afternoon peak periods. Westbound I-265 experiences congestion during both the typical weekday morning and afternoon peak periods. In all three corridors, congestion problems are expected to become more acute as demand increases in the future. The highway capacity levels of service do not meet INDOT standards in the current conditions or the design year. The added capacity from the proposed project will result in reduced travel times and congestion; reduced queuing; and improved mobility within the Louisville metro area, which will benefit EJ and non-EJ populations similarly.
- Improved safety outcomes – The Final Engineer's Report (October 2021) included historical crash analysis from 2017, 2018, and 2019 that identified several segments of I-64 that have a high crash frequency or high number of severe crashes. Crash types in these areas are largely associated with congestion (e.g., rear end crashes). Increased capacity is expected to reduce queuing, and therefore crashes are expected to be substantially reduced by the project. This increased safety will benefit EJ and non-EJ populations similarly.
- Improved condition of the roadway, bridges, and culverts – Replacement and/or rehabilitation of pavement on I-64 and I-265, as well as widening of shoulders, will benefit EJ and non-EJ populations similarly by improving driving conditions. Improved condition of bridges and culverts in the area will potentially improve drainage and benefit EJ and non-EJ populations similarly.

- Reduced noise – In accordance with INDOT’s Noise Policy, the Final Traffic Noise Technical Report (April 28, 2023) identified three noise barriers that are likely to be constructed as part of the project (see mapping in Attachment A). The noise barriers are listed below:
 - Noise Barrier (NB) 5: located east of I-64 approximately 75 feet north of Cottom Street and 600 feet south of Cherry Street. NB5, a two-barrier system, is five feet off the proposed edge of pavement along I-64 westbound. Because the Cherry Street overpass bridge is not being replaced with the project, the first segment is north of the Cherry Street overpass, and the second segment is south of the Cherry Street overpass. NB5 is located adjacent to a census block group with minority populations of EJ concern and would mitigate noise impacts at 37 impacted receptors. Impacted receptors for the project are those that approach or exceed the noise abatement criteria (NAC); therefore, any residential receptor with a modeled noise level of 66 decibels or greater in the year 2046 is considered impacted. Twenty-six (26) of the 37 impacted receptors are considered impacted in the existing condition, meaning modeled noise levels for the year 2019 are already at or above 66 decibels. This means the noise barrier will provide a noise reduction from the current conditions because the modeled noise levels for 2046 with the barrier are lower than those modeled for 2019. An additional 107 non-impacted receptors would benefit (receive a 5 decibel or greater reduction in noise) from NB5.
 - NB6: located east of I-265 from Maevi Drive to 400 feet south of the Green Valley Road overpass. There is a gap in the barrier near overhead transmission lines from Wedgewood Drive to Redwood Drive. NB6 is primarily five feet off the proposed edge of pavement along I-265 eastbound, except between Finchleigh Drive and Redwood Drive where the barrier is ten feet off the right-of-way boundary. NB6 is located adjacent to census block group with minority and low-income populations of EJ concern and would mitigate noise impacts at 34 impacted receptors. Impacted receptors for the project are those that approach or exceed the noise abatement criteria (NAC); therefore, any residential receptor with a modeled noise level of 66 decibels or greater in the year 2046 is considered impacted. Fifteen (15) of the 34 impacted receptors are considered impacted in the existing condition, meaning modeled noise levels for the year 2019 are already at or above 66 decibels. This means the noise barrier will provide a noise reduction from the current conditions because the modeled noise levels for 2046 with the barrier are lower than those modeled for 2019. An additional 162 non-impacted receptors would benefit (receive a 5 decibel or greater reduction in noise) from NB6.
 - NB7: located west of I-265 from approximately 235 feet south of Village Pine Drive to 630 feet north of Barrington Court and is five feet off the proposed edge of pavement, except along the I-265 westbound State Street off-ramp where it is 15 feet off the proposed edge of pavement due to sight line constraints. NB7 is located adjacent to census block group with minority populations of EJ concern and would mitigate noise impacts at 37 impacted receptors. Impacted receptors for the project are those that approach or exceed the noise abatement criteria (NAC); therefore, any residential receptor with a modeled noise level of 66 decibels or greater in the year 2046 is considered impacted. Twenty-two (22) of the 37 impacted receptors are considered impacted in the existing condition, meaning modeled noise levels for the year 2019 are already at or above 66 decibels. This means the noise barrier will provide a noise reduction from the current conditions because the modeled noise levels for 2046 with the barrier are lower than those modeled for 2019. An additional 66 non-impacted receptors would benefit (receive a 5 decibel or greater reduction in noise) from NB7.

Burdens

- Right-of-way acquisition – Approximately 0.70 acre of total right-of-way acquisition will be necessary at five locations along I-64 throughout the project area. The locations are in wooded areas at culvert inlet and outlet locations for the replacement and rehabilitation of existing culverts. The right-of-way is necessary for construction and access at the culverts and detention ponds. Permanent right-of-way acquisition is only needed at one location, totaling 0.26 acre, and is not within a census block group with minority and/or low-income populations of EJ concern. The remaining four locations are for temporary right-of-way acquisition and total 0.44 acre. One temporary right-of-way location, totaling 0.02 acre, will be required from a census block group with minority populations of EJ concern. Communities without populations of EJ concern will be impacted by more right-of-way acquisition than those with populations of EJ concern.
- Visual impacts due to tree clearing and noise barrier construction – Due to the construction of the project, approximately 80 acres of trees will be removed. Approximately 79 acres (99%) will be within the existing transportation right-of-way. Tree clearing will be adjacent to both communities with populations of EJ concern and communities without populations of EJ concern, and both will be impacted similarly by the visual impact of the tree removal. Tree removal will be minimized where possible.

Visual impacts could also occur from construction of the three noise barriers, which are all adjacent to census block groups with minority and low-income populations of EJ concern (see discussion above). However, because the noise barrier survey showed the majority of benefited receptors who responded were in favor of the barrier construction, the noise mitigating benefits are anticipated to outweigh any negative visual impacts. INDOT evaluated the possibility of planting trees on the neighborhood side of each noise barrier. It is not feasible to plant trees on the neighborhood side of NB5 because there are existing trees at that location outside the area needed to access and maintain the barrier. For NB6 and NB7, it was determined no trees will be planted in the right-of-way because there are existing trees in most places along the right-of-way line to visually screen the noise barriers. For all areas near noise barriers, efforts have been made to minimize tree clearing where possible on the neighborhood side of the barrier to provide visual screening.

- Temporary inconveniences, dust, noise, etc. – During construction, temporary travel inconveniences, as well as increase in dust and noise will similarly impact populations with EJ concerns and populations without EJ concerns. Based on the length on each side of the project area, approximately 48% borders a population of EJ concern and 52% borders populations that are not of EJ concern. These impacts will cease with completion of the project. The temporary impacts associated with construction activities will be minimized by following INDOT's Standard Specifications.
- Air quality impacts from increased roadway capacity – The additional capacity of I-64 could potentially bring localized areas of decreased air quality. However, air quality may also be improved due to decreased vehicle idling time brought about by the reduction in congestion along the roadway. Any possible changes in air quality will similarly impact populations with EJ concerns and populations without EJ concerns. Based on the length on each side of the project area, approximately 48% borders a population of EJ concern and 52% borders populations that are not of EJ concern.
- Noise impacts – Noise impacts were analyzed in accordance with INDOT's Noise Policy. Based on the Final Traffic Noise Technical Report (April 28, 2023), noise impacts were predicted for 164

receptors. Approximately 116 of the 164 impacted receptors (71%) are located within census block groups with populations of EJ concern. Of the 116 impacted receptors in census block groups with populations of EJ concern, 108 (93%) of these impacted noise receptors will be mitigated with a noise barrier (NB5, NB6, and NB7 described above). Although the percentage of impacted noise receptors in elevated low-income and/or minority census block groups (71%) appears to be “predominately borne by a minority population and/or a low-income population,” the majority of these impacts (93%) will be mitigated by construction of noise barriers, ultimately benefitting the adjacent neighborhoods.

- Temporary Road Closures – The MOT plan will require that Quarry Road, Captain Frank Road, and Cherry Street be closed for periods during construction of the bridges overhead and construction of foundations adjacent to the roadway. Interchange ramps at the I-64/US 150, I-64/I-265, and I-64/State Street interchanges will require short-term off-peak closures. Additional longer-term closures of ramps at I-64/Spring Street interchange will be necessary as well as single lane closures on State Street under I-265. These longer-term closures will likely last 4-6 months. There are minority populations with EJ concerns located adjacent to the east of the I-64/Spring Street interchange and northeast and northwest of the I-265/State Street interchange. There are low-income populations with EJ concerns located adjacent to the east and southwest of the I-265/State Street interchange.

The following commitments will be made to minimize impacts to local motorists: 1) Adjacent local streets (such as Quarry Road and Captain Frank Road, and Captain Frank Road and Cherry Street) will not be closed at the same time, and 2) Roads to be used as detour routes or likely alternate routes during full closures (such as Spring Street and State Street) will not be closed at the same time.

There are no sidewalks along Quarry Road, Captain Frank Road, or State Street. There are existing sidewalks along the north side of Cherry Street and along the south side of Spring Street. To minimize impacts to non-motorized travelers using these sidewalks, there will be no detours of the Cherry Street or Spring Street. Flaggers will be used to hold non-motorized travelers along the sidewalks during overhead work for safety purposes. The closure duration will be coordinated with INDOT construction and developed to minimize delay to non-motorized travel. This is included as a commitment in the environmental document.

TARC provides bus service to New Albany within the project area. Bus Route 71 includes portions of I-64 and Spring Street (Attachment D, page 1). There are no bus stops along I-64 and the closest stop to the project area is at State Street and Elm Street. The project will not impact access to the bus stop at State Street and Elm Street or any other stops along Route 71. The following MOT measures will impact Route 71:

- I-64 westbound exit to Spring Street/Elm Street closure and detour - This closure is anticipated to last 4-6 months. The detour will use the interstates and will include I-64 westbound to I-265 eastbound, I-265 eastbound to the State Street interchange, I-265 westbound to I-64 eastbound (Attachment D, page 3). It will add approximately 6 miles and 10 minutes to the bus trip.
- Spring Street to I-64 eastbound closure and detour – This closure is anticipated to last 4-6 months. The detour will use the interstates and will include I-64 westbound to I-265 eastbound, I-265 eastbound to the State Street interchange, I-265 westbound to I-64

eastbound (Attachment D, page 4). It will add approximately 6 miles and 10 minutes to the bus trip.

TARC was invited to participate in the Transportation Management Plan (TMP) meetings on August 24, 2022 and May 5, 2023. Coordination specific to the I-64/Spring Street ramp closures and Route 71 occurred on August 31, 2023 (Attachment D, pages 6-7). TARC requested coordination prior to the project start date so they can include the detours in their system. Coordination with TARC prior to construction regarding detours is included as a firm commitment in the environmental document.

During the short-term and longer-term closures, traffic would temporarily increase in some neighborhoods, including those with EJ populations. The closures at Quarry Road, Captain Frank Road, and Cherry Street are anticipated to be intermittent and short term, likely lasting a weekend or less. There are not EJ populations immediately adjacent to Quarry Road, but there are EJ populations approximately 0.3 mile to the east. The interchange at I-265/State Street is likely to be used during the longer-term closures of the ramps at the I-64/Spring Street interchange. Additional locations that may see increased traffic during short and long-term closures include State Street, Spring Street, SR 62/64, Quarry Road, Captain Frank Road, West Street, Old Vincennes Road, Old Hill Road, and Paoli Pike. Residents and businesses along detour routes would experience temporary increases in noise and vehicular emissions, as well as longer travel times due to the increased congestion.

The detours for the I-64 eastbound exit ramp to Spring Street and Spring Street entrance ramp to I-64 westbound will be along State Street which is within a population of EJ concern. Land use adjacent to State Street is primarily commercial with some residential. Traffic currently using each ramp is approximately 5,000-6,000 vehicles per day. Traffic on State Street is approximately 11,000-30,000 vehicles per day depending on the location. During construction when the I-64/Spring Street interchange ramps are closed, assuming all current daily ramp users follow the detour, the traffic on State Street is anticipated to increase by approximately 6,000 vehicles per day in the northbound direction (westbound I-64 entrance ramp closed) and 5,000 vehicles per day in the southbound direction (eastbound I-64 exit ramp closed). The increased traffic volumes on State Street during the detours is anticipated to be manageable through the monitoring and adjustment of signal timings by the INDOT Seymour District Traffic group when the detour routes are in effect. Contract provisions will be included so that the contractor coordinates with the INDOT Seymour District Traffic group prior to establishing the detours. Detours for the I-64 westbound to Spring Street exit ramp closure and Spring Street entrance ramp to I-64 eastbound will be along I-64 and I-265 which can accommodate additional traffic.

Detour routes will be temporary and will end once construction for the bridge or interchange ramp is complete. Based on the length on each side of the project area and those affected by detours and closures, approximately 48% of the project area borders a population of EJ concern and 52% of the project area borders populations that are not of EJ concern; therefore, this burden will be borne by both communities with EJ concerns and communities without EJ concerns.

VII. Conclusion

According to Federal guidance documents, a disproportionately high and adverse effect is defined as one that is:

- Predominantly borne by a low-income population and/or a minority population; or
- Suffered by the low-income population and/or minority population and is appreciably more severe or greater in magnitude than the adverse effect that will be suffered by the non-low-income and/or non-minority population.

The Improve 64 project will result in permanent impacts to communities with EJ concerns through acquisition of right-of-way, by increasing noise levels, altering the visual landscape, and temporarily changing travel patterns during construction. The majority of right-of-way acquisition will be in communities without populations of EJ concern. Noise impacts are anticipated to be mitigated through the construction of noise barriers. Although noise barriers could have a visual impact, the noise reduction would outweigh this. Visual impacts will occur from tree removal, but this will similarly affect both communities with populations of EJ concern and populations without EJ concerns. The project will also temporarily impact populations of EJ concern through construction-related vehicle emissions, dust, noise, and vibration. These temporary construction impacts will be minimized by following INDOT's Standard Specifications. Construction activities would also impact traffic operations in the project area. Lane restrictions, closures, and detours could cause delays and/or additional travel times for local and regional travelers, school buses, emergency responders, and transit buses. Coordination will occur with TARC regarding impacts to bus Route 71 closer to construction. This coordination is included as a firm commitment in the environmental document.

Minimization and mitigation for impacts to populations of EJ concern include:

- Construction of noise barriers that will provide a reduction in noise following construction and in the design year;
- Commitments to minimize impacts to local motorists by not closing adjacent streets or likely alternate detour routes at the same time; this is a commitment in the environmental document;
- Commitments to minimize impacts to pedestrian/bicyclists by using flaggers instead of detours and minimizing the delay experienced by those users; this is a commitment in the environmental document; and
- Commitments to minimizing impacts from construction activities by following INDOT's Standard Specifications.

Benefits to populations of EJ concern include mitigation for existing traffic noise following construction, as well as reduced congestion and improved safety on I-64 and I-265.

The temporary and permanent adverse effects to communities with populations of EJ concern are not anticipated to be greater or more severe in magnitude than those borne by communities without populations of EJ concern.

In addition, communities with populations of EJ concern have been and will continue to be provided full and fair participation in the transportation decision-making process. Therefore, the Improve 64 project would not result in a disproportionately high and adverse effect to low-income and/or minority populations.

Attachments:

Attachment A: Maps

Attachment B: EJ Data Tables
Attachment C: EJ Working Group Meeting Materials
Attachment D: Transit Information
Attachment E: Census Data












EJ ANALYSIS

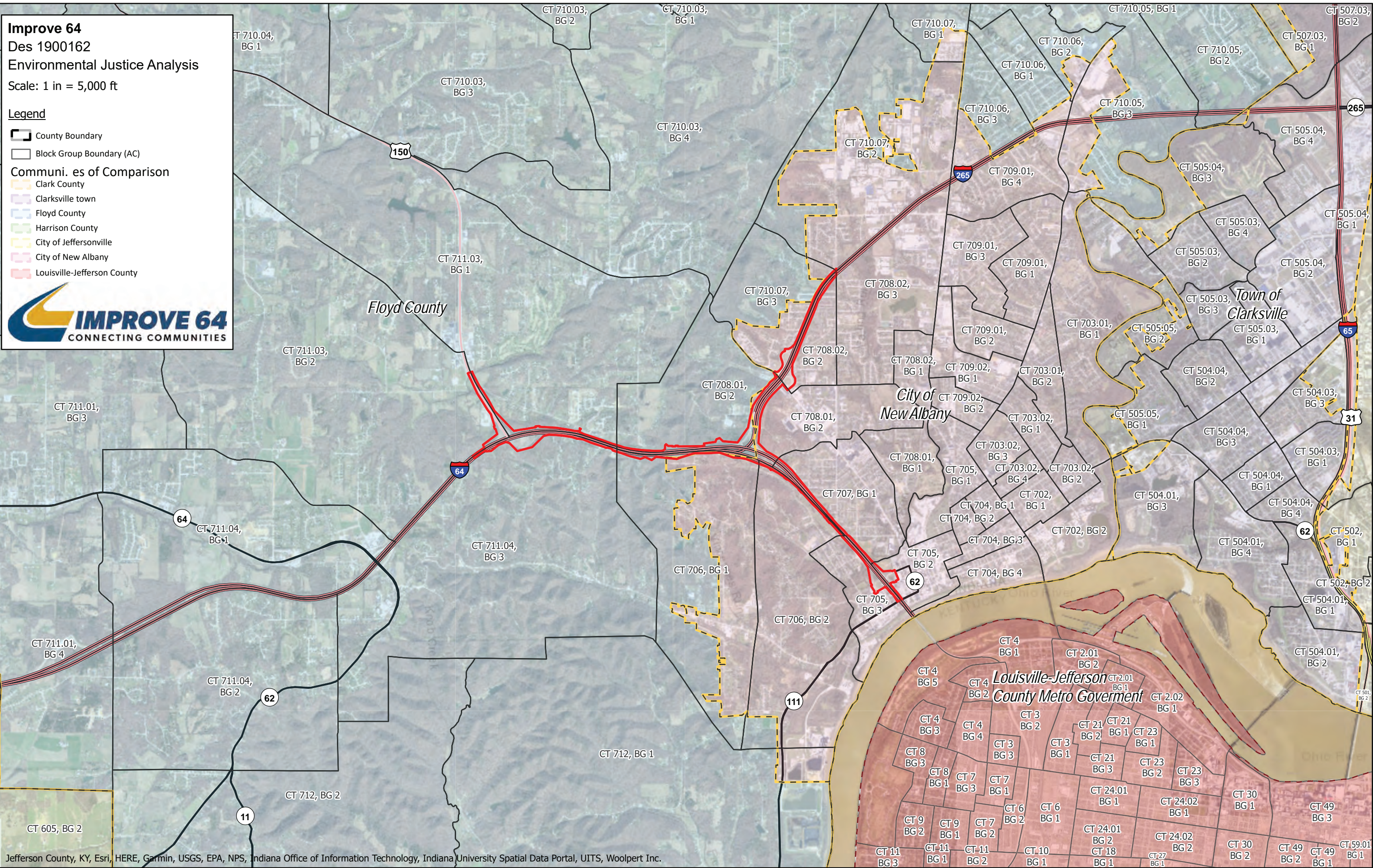
ATTACHMENT A: MAPS

Improve 64
 Des 1900162
 Environmental Justice Analysis

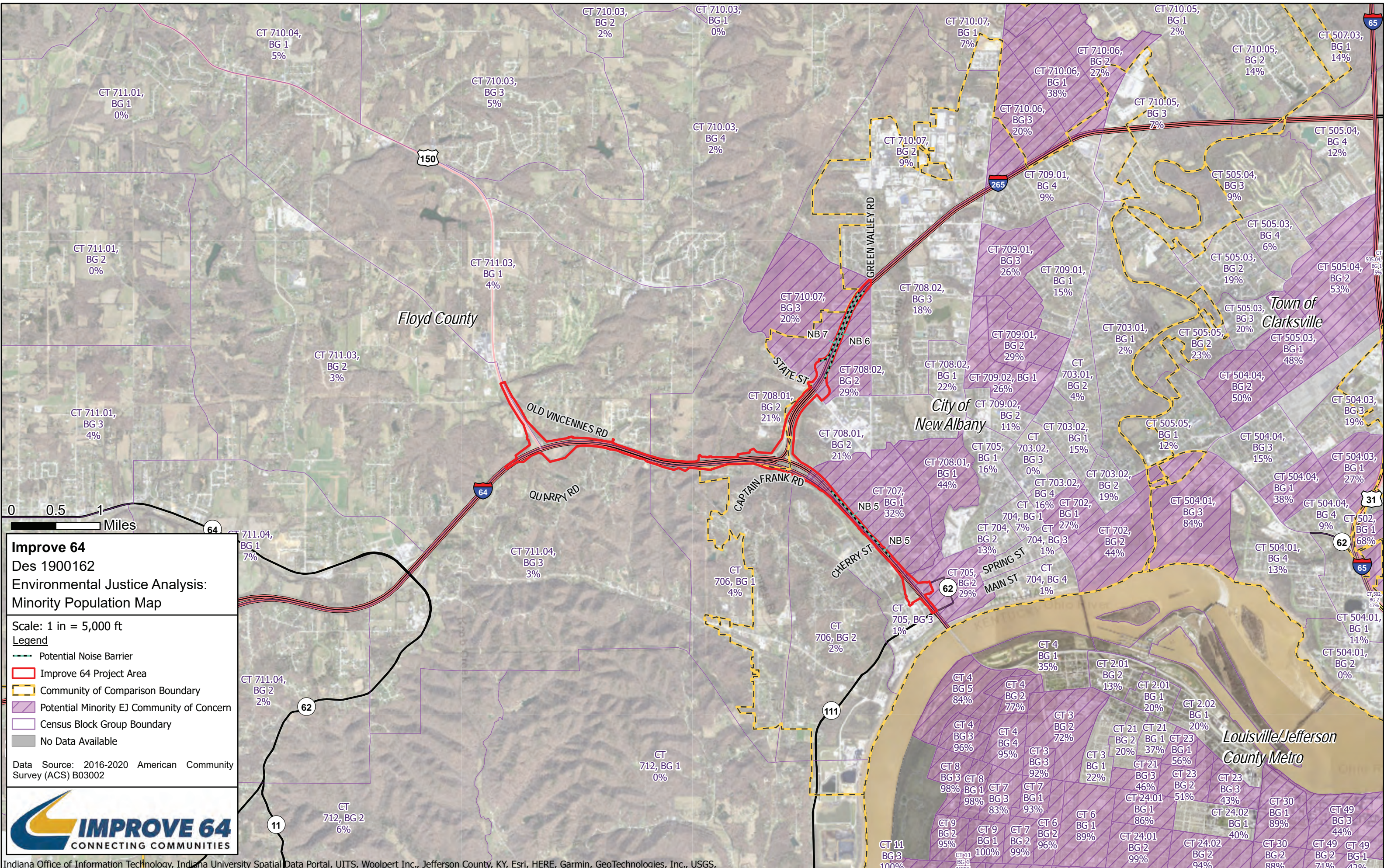
Scale: 1 in = 5,000 ft

Legend

-  County Boundary
-  Block Group Boundary (AC)
- Communi. es of Comparison**
-  Clark County
-  Clarksville town
-  Floyd County
-  Harrison County
-  City of Jeffersonville
-  City of New Albany
-  Louisville-Jefferson County



Jefferson County, KY, Esri, HERE, Garmin, USGS, EPA, NPS, Indiana Office of Information Technology, Indiana University Spatial Data Portal, UITS, Woolpert Inc.



Improve 64
 Des 1900162
 Environmental Justice Analysis:
 Minority Population Map

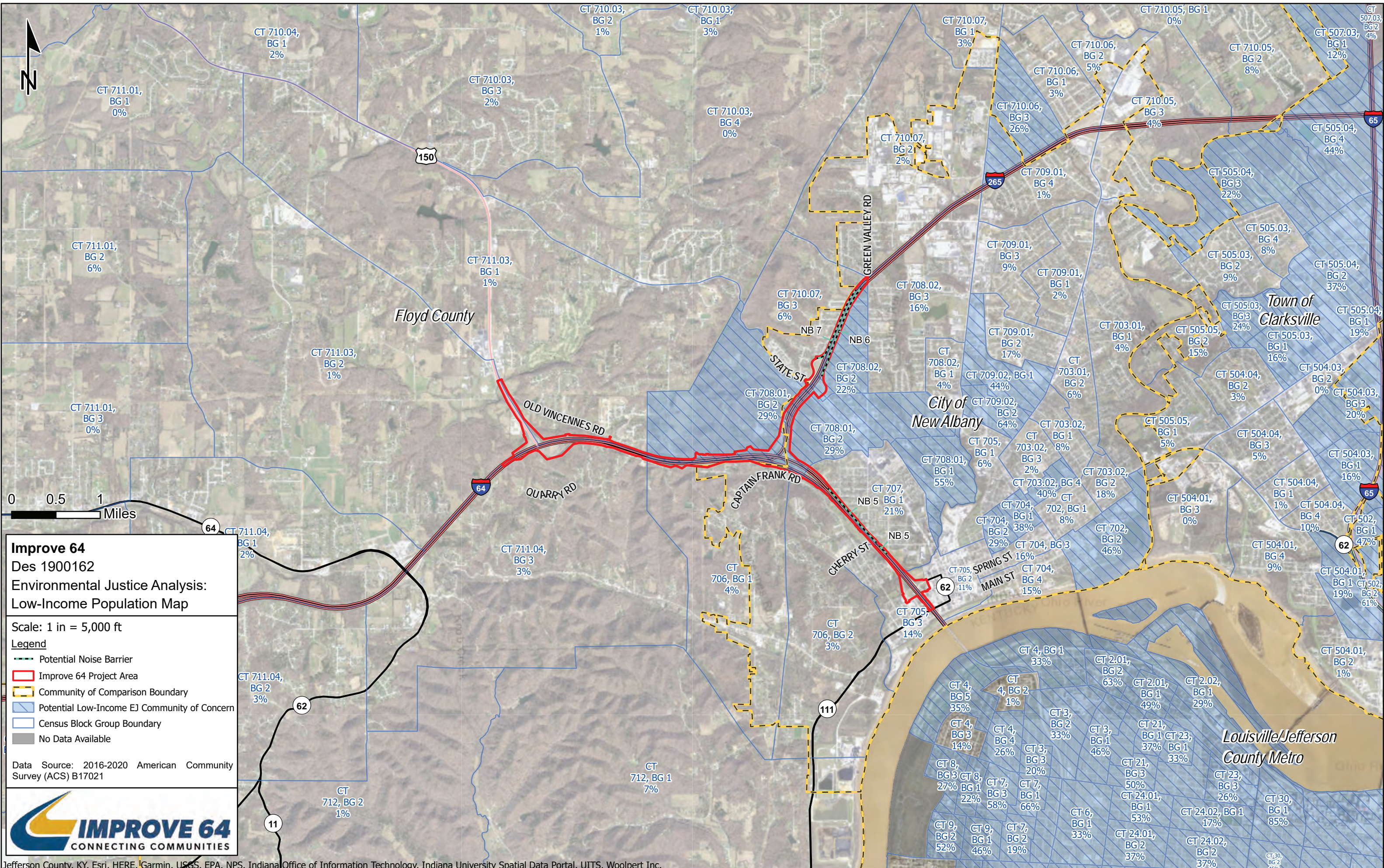
Scale: 1 in = 5,000 ft

- Legend**
- Potential Noise Barrier
 - Improve 64 Project Area
 - Community of Comparison Boundary
 - Potential Minority EJ Community of Concern
 - Census Block Group Boundary
 - No Data Available

Data Source: 2016-2020 American Community Survey (ACS) B03002



Indiana Office of Information Technology, Indiana University Spatial Data Portal, UITS, Woolpert Inc., Jefferson County, KY, Esri, HERE, Garmin, GeoTechnologies, Inc., USGS,



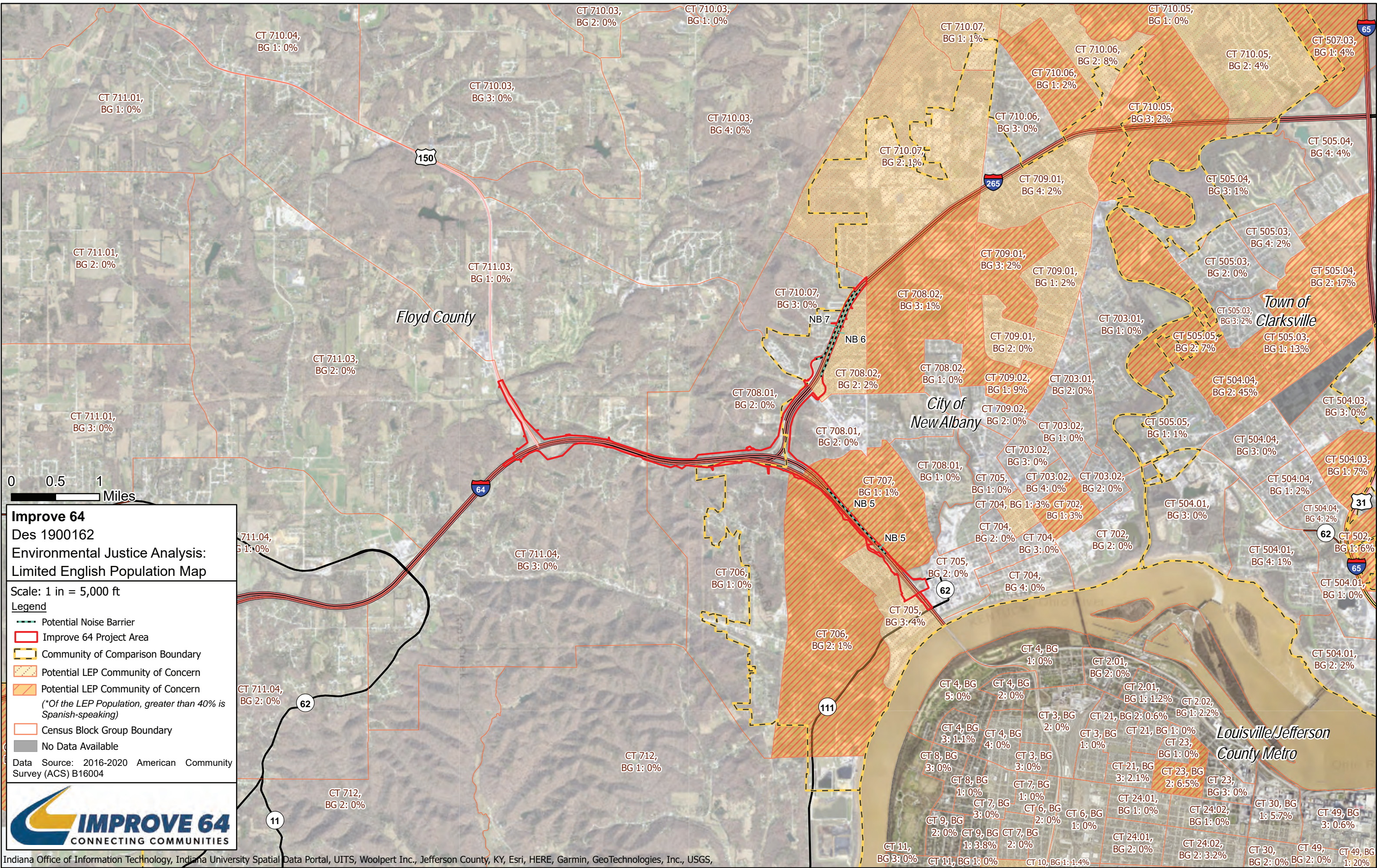
Improve 64
 Des 1900162
 Environmental Justice Analysis:
 Low-Income Population Map

Scale: 1 in = 5,000 ft
Legend
 - - - Potential Noise Barrier
 [Red Outline] Improve 64 Project Area
 [Yellow Dashed Outline] Community of Comparison Boundary
 [Blue Hatched Area] Potential Low-Income EJ Community of Concern
 [Blue Outline] Census Block Group Boundary
 [Grey Box] No Data Available

Data Source: 2016-2020 American Community Survey (ACS) B17021



Jefferson County, KY, Esri, HERE, Garmin, USGS, EPA, NPS, Indiana Office of Information Technology, Indiana University Spatial Data Portal, UITS, Woolpert Inc.



Improve 64
 Des 1900162
 Environmental Justice Analysis:
 Limited English Population Map

Scale: 1 in = 5,000 ft

- Legend**
- Potential Noise Barrier
 - Improve 64 Project Area
 - Community of Comparison Boundary
 - Potential LEP Community of Concern
 - Potential LEP Community of Concern
 (*Of the LEP Population, greater than 40% is Spanish-speaking)
 - Census Block Group Boundary
 - No Data Available

Data Source: 2016-2020 American Community Survey (ACS) B16004



Indiana Office of Information Technology, Indiana University Spatial Data Portal, UITS, Woolpert Inc., Jefferson County, KY, Esri, HERE, Garmin, GeoTechnologies, Inc., USGS,



EJ ANALYSIS

ATTACHMENT B: EJ DATA TABLES

| GEOID | Affected Community (AC) | Community of Comparison (COC) | % Minority | 125% COC Minority | Minority EJ Population? | % Low Income | 125% COC Low Income | Low Income EJ Population? | % Adults with Limited English Proficiency (LEP) | 125% COC Adults with LEP | LEP population? |
|--------------|---|-------------------------------|------------|-------------------|-------------------------|--------------|---------------------|---------------------------|---|--------------------------|-----------------|
| 180190507031 | Block Group 1, Census Tract 507.03, Clark County, Indiana | Clark County | 14% | 22% | No | 12% | 12% | Yes | 4% | 3% | Yes |
| 180190507032 | Block Group 2, Census Tract 507.03, Clark County, Indiana | Clark County | 11% | 22% | No | 4% | 12% | No | 2% | 3% | No |
| 180190504011 | Block Group 1, Census Tract 504.01, Clark County, Indiana | Town of Clarksville | 11% | 26% | No | 19% | 16% | Yes | 0% | 7% | No |
| 180190504012 | Block Group 2, Census Tract 504.01, Clark County, Indiana | Town of Clarksville | 0% | 26% | No | 1% | 16% | No | 2% | 7% | No |
| 180190504013 | Block Group 3, Census Tract 504.01, Clark County, Indiana | Town of Clarksville | 84% | 26% | Yes | 0% | 16% | No | 0% | 7% | No |
| 180190504014 | Block Group 4, Census Tract 504.01, Clark County, Indiana | Town of Clarksville | 13% | 26% | No | 9% | 16% | No | 1% | 7% | No |
| 180190504031 | Block Group 1, Census Tract 504.03, Clark County, Indiana | Town of Clarksville | 27% | 26% | Yes | 16% | 16% | Yes | 7% | 7% | Yes |
| 180190504033 | Block Group 3, Census Tract 504.03, Clark County, Indiana | Town of Clarksville | 19% | 26% | No | 20% | 16% | Yes | 0% | 7% | No |
| 180190504041 | Block Group 1, Census Tract 504.04, Clark County, Indiana | Town of Clarksville | 38% | 26% | Yes | 1% | 16% | No | 2% | 7% | No |
| 180190504042 | Block Group 2, Census Tract 504.04, Clark County, Indiana | Town of Clarksville | 50% | 26% | Yes | 3% | 16% | No | 45% | 7% | Yes |
| 180190504043 | Block Group 3, Census Tract 504.04, Clark County, Indiana | Town of Clarksville | 15% | 26% | No | 5% | 16% | No | 0% | 7% | No |
| 180190504044 | Block Group 4, Census Tract 504.04, Clark County, Indiana | Town of Clarksville | 9% | 26% | No | 10% | 16% | No | 2% | 7% | No |
| 180190505031 | Block Group 1, Census Tract 505.03, Clark County, Indiana | Town of Clarksville | 48% | 26% | Yes | 16% | 16% | Yes | 13% | 7% | Yes |
| 180190505032 | Block Group 2, Census Tract 505.03, Clark County, Indiana | Town of Clarksville | 19% | 26% | No | 9% | 16% | No | 0% | 7% | No |
| 180190505033 | Block Group 3, Census Tract 505.03, Clark County, Indiana | Town of Clarksville | 20% | 26% | No | 24% | 16% | Yes | 2% | 7% | No |
| 180190505034 | Block Group 4, Census Tract 505.03, Clark County, Indiana | Town of Clarksville | 6% | 26% | No | 8% | 16% | No | 2% | 7% | No |
| 180190505042 | Block Group 2, Census Tract 505.04, Clark County, Indiana | Town of Clarksville | 53% | 26% | Yes | 37% | 16% | Yes | 17% | 7% | Yes |
| 180190505043 | Block Group 3, Census Tract 505.04, Clark County, Indiana | Town of Clarksville | 9% | 26% | No | 22% | 16% | Yes | 1% | 7% | No |
| 180190505044 | Block Group 4, Census Tract 505.04, Clark County, Indiana | Town of Clarksville | 12% | 26% | No | 44% | 16% | Yes | 4% | 7% | No |
| 180190505051 | Block Group 1, Census Tract 505.05, Clark County, Indiana | Town of Clarksville | 12% | 26% | No | 5% | 16% | No | 1% | 7% | No |
| 180430706001 | Block Group 1, Census Tract 706, Floyd County, Indiana | Floyd County | 4% | 16% | No | 4% | 12% | No | 0% | 1% | No |
| 180430710031 | Block Group 1, Census Tract 710.03, Floyd County, Indiana | Floyd County | 0% | 16% | No | 3% | 12% | No | 0% | 1% | No |
| 180430710032 | Block Group 2, Census Tract 710.03, Floyd County, Indiana | Floyd County | 2% | 16% | No | 1% | 12% | No | 0% | 1% | No |
| 180430710033 | Block Group 3, Census Tract 710.03, Floyd County, Indiana | Floyd County | 5% | 16% | No | 2% | 12% | No | 0% | 1% | No |
| 180430710034 | Block Group 4, Census Tract 710.03, Floyd County, Indiana | Floyd County | 2% | 16% | No | 0% | 12% | No | 0% | 1% | No |

 Denotes AC with potential Minority or Low-Income EJ Population

| GEOID | Affected Community (AC) | Community of Comparison (COC) | % Minority | 125% COC Minority | Minority EJ Population? | % Low Income | 125% COC Low Income | Low Income EJ Population? | % Adults with Limited English Proficiency (LEP) | 125% COC Adults with LEP | LEP population? |
|--------------|---|-------------------------------|------------|-------------------|-------------------------|--------------|---------------------|---------------------------|---|--------------------------|-----------------|
| 180430710041 | Block Group 1, Census Tract 710.04, Floyd County, Indiana | Floyd County | 5% | 16% | No | 2% | 12% | No | 0% | 1% | No |
| 180430710051 | Block Group 1, Census Tract 710.05, Floyd County, Indiana | Floyd County | 2% | 16% | No | 0% | 12% | No | 0% | 1% | No |
| 180430710052 | Block Group 2, Census Tract 710.05, Floyd County, Indiana | Floyd County | 14% | 16% | No | 8% | 12% | No | 4% | 1% | Yes |
| 180430710061 | Block Group 1, Census Tract 710.06, Floyd County, Indiana | Floyd County | 38% | 16% | Yes | 3% | 12% | No | 2% | 1% | Yes |
| 180430710062 | Block Group 2, Census Tract 710.06, Floyd County, Indiana | Floyd County | 27% | 16% | Yes | 5% | 12% | No | 8% | 1% | Yes |
| 180430710063 | Block Group 3, Census Tract 710.06, Floyd County, Indiana | Floyd County | 20% | 16% | Yes | 26% | 12% | Yes | 0% | 1% | No |
| 180430710071 | Block Group 1, Census Tract 710.07, Floyd County, Indiana | Floyd County | 7% | 16% | No | 3% | 12% | No | 1% | 1% | Yes |
| 180430710073 | Block Group 3, Census Tract 710.07, Floyd County, Indiana | Floyd County | 20% | 16% | Yes | 6% | 12% | No | 0% | 1% | No |
| 180430711011 | Block Group 1, Census Tract 711.01, Floyd County, Indiana | Floyd County | 0% | 16% | No | 0% | 12% | No | 0% | 1% | No |
| 180430711012 | Block Group 2, Census Tract 711.01, Floyd County, Indiana | Floyd County | 0% | 16% | No | 6% | 12% | No | 0% | 1% | No |
| 180430711013 | Block Group 3, Census Tract 711.01, Floyd County, Indiana | Floyd County | 4% | 16% | No | 0% | 12% | No | 0% | 1% | No |
| 180430711014 | Block Group 4, Census Tract 711.01, Floyd County, Indiana | Floyd County | 14% | 16% | No | 9% | 12% | No | 0% | 1% | No |
| 180430711031 | Block Group 1, Census Tract 711.03, Floyd County, Indiana | Floyd County | 4% | 16% | No | 1% | 12% | No | 0% | 1% | No |
| 180430711032 | Block Group 2, Census Tract 711.03, Floyd County, Indiana | Floyd County | 3% | 16% | No | 1% | 12% | No | 0% | 1% | No |
| 180430711041 | Block Group 1, Census Tract 711.04, Floyd County, Indiana | Floyd County | 7% | 16% | No | 2% | 12% | No | 0% | 1% | No |
| 180430711042 | Block Group 2, Census Tract 711.04, Floyd County, Indiana | Floyd County | 2% | 16% | No | 3% | 12% | No | 0% | 1% | No |
| 180430711043 | Block Group 3, Census Tract 711.04, Floyd County, Indiana | Floyd County | 3% | 16% | No | 3% | 12% | No | 0% | 1% | No |
| 180430712001 | Block Group 1, Census Tract 712, Floyd County, Indiana | Floyd County | 0% | 16% | No | 7% | 12% | No | 0% | 1% | No |
| 180430712002 | Block Group 2, Census Tract 712, Floyd County, Indiana | Floyd County | 6% | 16% | No | 1% | 12% | No | 0% | 1% | No |
| 180610605001 | Block Group 1, Census Tract 605, Harrison County, Indiana | Harrison County | 4% | 6% | No | 1% | 11% | No | 3% | 1% | Yes |
| 180610605002 | Block Group 2, Census Tract 605, Harrison County, Indiana | Harrison County | 5% | 6% | No | 1% | 11% | No | 0% | 1% | No |
| 180190502001 | Block Group 1, Census Tract 502, Clark County, Indiana | City of Jeffersonville | 68% | 32% | Yes | 47% | 13% | Yes | 6% | 2% | Yes |
| 180190502002 | Block Group 2, Census Tract 502, Clark County, Indiana | City of Jeffersonville | 17% | 32% | No | 61% | 13% | Yes | 0% | 2% | No |
| 180190505041 | Block Group 1, Census Tract 505.04, Clark County, Indiana | City of Jeffersonville | 5% | 32% | No | 19% | 13% | Yes | 2% | 2% | No |
| 180190505052 | Block Group 2, Census Tract 505.05, Clark County, Indiana | City of New Albany | 23% | 23% | No | 15% | 22% | No | 7% | 1% | Yes |

 Denotes AC with potential Minority or Low-Income EJ Population

| GEOID | Affected Community (AC) | Community of Comparison (COC) | % Minority | 125% COC Minority | Minority EJ Population? | % Low Income | 125% COC Low Income | Low Income EJ Population? | % Adults with Limited English Proficiency (LEP) | 125% COC Adults with LEP | LEP population? |
|--------------|---|-------------------------------|------------|-------------------|-------------------------|--------------|---------------------|---------------------------|---|--------------------------|-----------------|
| 180430702001 | Block Group 1, Census Tract 702, Floyd County, Indiana | City of New Albany | 27% | 23% | Yes | 8% | 22% | No | 3% | 1% | Yes |
| 180430702002 | Block Group 2, Census Tract 702, Floyd County, Indiana | City of New Albany | 44% | 23% | Yes | 46% | 22% | Yes | 0% | 1% | No |
| 180430703011 | Block Group 1, Census Tract 703.01, Floyd County, Indiana | City of New Albany | 2% | 23% | No | 4% | 22% | No | 0% | 1% | No |
| 180430703012 | Block Group 2, Census Tract 703.01, Floyd County, Indiana | City of New Albany | 4% | 23% | No | 6% | 22% | No | 0% | 1% | No |
| 180430703021 | Block Group 1, Census Tract 703.02, Floyd County, Indiana | City of New Albany | 15% | 23% | No | 8% | 22% | No | 0% | 1% | No |
| 180430703022 | Block Group 2, Census Tract 703.02, Floyd County, Indiana | City of New Albany | 19% | 23% | No | 18% | 22% | No | 0% | 1% | No |
| 180430703023 | Block Group 3, Census Tract 703.02, Floyd County, Indiana | City of New Albany | 0% | 23% | No | 2% | 22% | No | 0% | 1% | No |
| 180430703024 | Block Group 4, Census Tract 703.02, Floyd County, Indiana | City of New Albany | 16% | 23% | No | 40% | 22% | Yes | 0% | 1% | No |
| 180430704001 | Block Group 1, Census Tract 704, Floyd County, Indiana | City of New Albany | 7% | 23% | No | 38% | 22% | Yes | 3% | 1% | Yes |
| 180430704002 | Block Group 2, Census Tract 704, Floyd County, Indiana | City of New Albany | 13% | 23% | No | 29% | 22% | Yes | 0% | 1% | No |
| 180430704003 | Block Group 3, Census Tract 704, Floyd County, Indiana | City of New Albany | 1% | 23% | No | 16% | 22% | No | 0% | 1% | No |
| 180430704004 | Block Group 4, Census Tract 704, Floyd County, Indiana | City of New Albany | 1% | 23% | No | 15% | 22% | No | 0% | 1% | No |
| 180430705001 | Block Group 1, Census Tract 705, Floyd County, Indiana | City of New Albany | 16% | 23% | No | 6% | 22% | No | 0% | 1% | No |
| 180430705002 | Block Group 2, Census Tract 705, Floyd County, Indiana | City of New Albany | 29% | 23% | Yes | 11% | 22% | No | 0% | 1% | No |
| 180430705003 | Block Group 3, Census Tract 705, Floyd County, Indiana | City of New Albany | 1% | 23% | No | 14% | 22% | No | 4% | 1% | Yes |
| 180430706002 | Block Group 2, Census Tract 706, Floyd County, Indiana | City of New Albany | 2% | 23% | No | 3% | 22% | No | 1% | 1% | Yes |
| 180430707001 | Block Group 1, Census Tract 707, Floyd County, Indiana | City of New Albany | 32% | 23% | Yes | 21% | 22% | No | 1% | 1% | Yes |
| 180430708011 | Block Group 1, Census Tract 708.01, Floyd County, Indiana | City of New Albany | 44% | 23% | Yes | 55% | 22% | Yes | 0% | 1% | No |
| 180430708012 | Block Group 2, Census Tract 708.01, Floyd County, Indiana | City of New Albany | 21% | 23% | No | 29% | 22% | Yes | 0% | 1% | No |
| 180430708021 | Block Group 1, Census Tract 708.02, Floyd County, Indiana | City of New Albany | 22% | 23% | No | 4% | 22% | No | 0% | 1% | No |
| 180430708022 | Block Group 2, Census Tract 708.02, Floyd County, Indiana | City of New Albany | 29% | 23% | Yes | 22% | 22% | Yes | 2% | 1% | Yes |
| 180430708023 | Block Group 3, Census Tract 708.02, Floyd County, Indiana | City of New Albany | 18% | 23% | No | 16% | 22% | No | 1% | 1% | Yes |
| 180430709011 | Block Group 1, Census Tract 709.01, Floyd County, Indiana | City of New Albany | 15% | 23% | No | 2% | 22% | No | 2% | 1% | Yes |
| 180430709012 | Block Group 2, Census Tract 709.01, Floyd County, Indiana | City of New Albany | 29% | 23% | Yes | 17% | 22% | No | 0% | 1% | No |
| 180430709013 | Block Group 3, Census Tract 709.01, Floyd County, Indiana | City of New Albany | 26% | 23% | Yes | 9% | 22% | No | 2% | 1% | Yes |

 Denotes AC with potential Minority or Low-Income EJ Population

| GEOID | Affected Community (AC) | Community of Comparison (COC) | % Minority | 125% COC Minority | Minority EJ Population? | % Low Income | 125% COC Low Income | Low Income EJ Population? | % Adults with Limited English Proficiency (LEP) | 125% COC Adults with LEP | LEP population? |
|--------------|--|--|------------|-------------------|-------------------------|--------------|---------------------|---------------------------|---|--------------------------|-----------------|
| 180430709014 | Block Group 4, Census Tract 709.01, Floyd County, Indiana | City of New Albany | 9% | 23% | No | 1% | 22% | No | 2% | 1% | Yes |
| 180430709021 | Block Group 1, Census Tract 709.02, Floyd County, Indiana | City of New Albany | 26% | 23% | Yes | 44% | 22% | Yes | 9% | 1% | Yes |
| 180430709022 | Block Group 2, Census Tract 709.02, Floyd County, Indiana | City of New Albany | 11% | 23% | No | 64% | 22% | Yes | 0% | 1% | No |
| 180430710053 | Block Group 3, Census Tract 710.05, Floyd County, Indiana | City of New Albany | 7% | 23% | No | 4% | 22% | No | 2% | 1% | Yes |
| 180430710072 | Block Group 2, Census Tract 710.07, Floyd County, Indiana | City of New Albany | 9% | 23% | No | 2% | 22% | No | 1% | 1% | Yes |
| 211110002011 | Block Group 1, Census Tract 2.01, Jefferson County, Kentucky | Louisville/Jefferson County Metro Government | 20% | 42% | No | 49% | 17% | Yes | 1% | 6% | No |
| 211110002012 | Block Group 2, Census Tract 2.01, Jefferson County, Kentucky | Louisville/Jefferson County Metro Government | 13% | 42% | No | 63% | 17% | Yes | 0% | 6% | No |
| 211110002021 | Block Group 1, Census Tract 2.02, Jefferson County, Kentucky | Louisville/Jefferson County Metro Government | 20% | 42% | No | 29% | 17% | Yes | 2% | 6% | No |
| 211110003001 | Block Group 1, Census Tract 3, Jefferson County, Kentucky | Louisville/Jefferson County Metro Government | 22% | 42% | No | 46% | 17% | Yes | 0% | 6% | No |
| 211110003002 | Block Group 2, Census Tract 3, Jefferson County, Kentucky | Louisville/Jefferson County Metro Government | 72% | 42% | Yes | 33% | 17% | Yes | 0% | 6% | No |
| 211110003003 | Block Group 3, Census Tract 3, Jefferson County, Kentucky | Louisville/Jefferson County Metro Government | 92% | 42% | Yes | 20% | 17% | Yes | 0% | 6% | No |
| 211110004001 | Block Group 1, Census Tract 4, Jefferson County, Kentucky | Louisville/Jefferson County Metro Government | 35% | 42% | No | 33% | 17% | Yes | 0% | 6% | No |
| 211110004002 | Block Group 2, Census Tract 4, Jefferson County, Kentucky | Louisville/Jefferson County Metro Government | 77% | 42% | Yes | 1% | 17% | No | 0% | 6% | No |
| 211110004003 | Block Group 3, Census Tract 4, Jefferson County, Kentucky | Louisville/Jefferson County Metro Government | 96% | 42% | Yes | 14% | 17% | No | 1% | 6% | No |
| 211110004004 | Block Group 4, Census Tract 4, Jefferson County, Kentucky | Louisville/Jefferson County Metro Government | 95% | 42% | Yes | 26% | 17% | Yes | 0% | 6% | No |
| 211110004005 | Block Group 5, Census Tract 4, Jefferson County, Kentucky | Louisville/Jefferson County Metro Government | 84% | 42% | Yes | 35% | 17% | Yes | 0% | 6% | No |
| 211110006001 | Block Group 1, Census Tract 6, Jefferson County, Kentucky | Louisville/Jefferson County Metro Government | 89% | 42% | Yes | 33% | 17% | Yes | 0% | 6% | No |
| 211110006002 | Block Group 2, Census Tract 6, Jefferson County, Kentucky | Louisville/Jefferson County Metro Government | 96% | 42% | Yes | 29% | 17% | Yes | 0% | 6% | No |
| 211110007001 | Block Group 1, Census Tract 7, Jefferson County, Kentucky | Louisville/Jefferson County Metro Government | 93% | 42% | Yes | 66% | 17% | Yes | 0% | 6% | No |
| 211110007002 | Block Group 2, Census Tract 7, Jefferson County, Kentucky | Louisville/Jefferson County Metro Government | 99% | 42% | Yes | 19% | 17% | Yes | 0% | 6% | No |
| 211110007003 | Block Group 3, Census Tract 7, Jefferson County, Kentucky | Louisville/Jefferson County Metro Government | 83% | 42% | Yes | 58% | 17% | Yes | 0% | 6% | No |
| 211110008001 | Block Group 1, Census Tract 8, Jefferson County, Kentucky | Louisville/Jefferson County Metro Government | 98% | 42% | Yes | 22% | 17% | Yes | 0% | 6% | No |
| 211110008003 | Block Group 3, Census Tract 8, Jefferson County, Kentucky | Louisville/Jefferson County Metro Government | 98% | 42% | Yes | 27% | 17% | Yes | 0% | 6% | No |
| 211110009001 | Block Group 1, Census Tract 9, Jefferson County, Kentucky | Louisville/Jefferson County Metro Government | 100% | 42% | Yes | 46% | 17% | Yes | 4% | 6% | No |
| 211110009002 | Block Group 2, Census Tract 9, Jefferson County, Kentucky | Louisville/Jefferson County Metro Government | 95% | 42% | Yes | 52% | 17% | Yes | 0% | 6% | No |

 Denotes AC with potential Minority or Low-Income EJ Population

| GEOID | Affected Community (AC) | Community of Comparison (COC) | % Minority | 125% COC Minority | Minority EJ Population? | % Low Income | 125% COC Low Income | Low Income EJ Population? | % Adults with Limited English Proficiency (LEP) | 125% COC Adults with LEP | LEP population? |
|--------------|---|--|------------|-------------------|-------------------------|--------------|---------------------|---------------------------|---|--------------------------|-----------------|
| 211110010001 | Block Group 1, Census Tract 10, Jefferson County, Kentucky | Louisville/Jefferson County Metro Government | 97% | 42% | Yes | 21% | 17% | Yes | 1% | 6% | No |
| 211110011001 | Block Group 1, Census Tract 11, Jefferson County, Kentucky | Louisville/Jefferson County Metro Government | 100% | 42% | Yes | 41% | 17% | Yes | 0% | 6% | No |
| 211110011002 | Block Group 2, Census Tract 11, Jefferson County, Kentucky | Louisville/Jefferson County Metro Government | 97% | 42% | Yes | 52% | 17% | Yes | 13% | 6% | Yes |
| 211110011003 | Block Group 3, Census Tract 11, Jefferson County, Kentucky | Louisville/Jefferson County Metro Government | 100% | 42% | Yes | 9% | 17% | No | 0% | 6% | No |
| 211110018001 | Block Group 1, Census Tract 18, Jefferson County, Kentucky | Louisville/Jefferson County Metro Government | 99% | 42% | Yes | 69% | 17% | Yes | 0% | 6% | No |
| 211110021001 | Block Group 1, Census Tract 21, Jefferson County, Kentucky | Louisville/Jefferson County Metro Government | 37% | 42% | No | 37% | 17% | Yes | 0% | 6% | No |
| 211110021002 | Block Group 2, Census Tract 21, Jefferson County, Kentucky | Louisville/Jefferson County Metro Government | 20% | 42% | No | 45% | 17% | Yes | 1% | 6% | No |
| 211110021003 | Block Group 3, Census Tract 21, Jefferson County, Kentucky | Louisville/Jefferson County Metro Government | 46% | 42% | Yes | 50% | 17% | Yes | 2% | 6% | No |
| 211110023001 | Block Group 1, Census Tract 23, Jefferson County, Kentucky | Louisville/Jefferson County Metro Government | 56% | 42% | Yes | 33% | 17% | Yes | 0% | 6% | No |
| 211110023002 | Block Group 2, Census Tract 23, Jefferson County, Kentucky | Louisville/Jefferson County Metro Government | 51% | 42% | Yes | 60% | 17% | Yes | 7% | 6% | Yes |
| 211110023003 | Block Group 3, Census Tract 23, Jefferson County, Kentucky | Louisville/Jefferson County Metro Government | 43% | 42% | Yes | 26% | 17% | Yes | 0% | 6% | No |
| 211110024011 | Block Group 1, Census Tract 24.01, Jefferson County, Kentucky | Louisville/Jefferson County Metro Government | 86% | 42% | Yes | 53% | 17% | Yes | 0% | 6% | No |
| 211110024012 | Block Group 2, Census Tract 24.01, Jefferson County, Kentucky | Louisville/Jefferson County Metro Government | 99% | 42% | Yes | 37% | 17% | Yes | 0% | 6% | No |
| 211110024021 | Block Group 1, Census Tract 24.02, Jefferson County, Kentucky | Louisville/Jefferson County Metro Government | 40% | 42% | No | 17% | 17% | Yes | 0% | 6% | No |
| 211110024022 | Block Group 2, Census Tract 24.02, Jefferson County, Kentucky | Louisville/Jefferson County Metro Government | 94% | 42% | Yes | 37% | 17% | Yes | 3% | 6% | No |
| 211110027001 | Block Group 1, Census Tract 27, Jefferson County, Kentucky | Louisville/Jefferson County Metro Government | 67% | 42% | Yes | 62% | 17% | Yes | 1% | 6% | No |
| 211110030001 | Block Group 1, Census Tract 30, Jefferson County, Kentucky | Louisville/Jefferson County Metro Government | 89% | 42% | Yes | 85% | 17% | Yes | 6% | 6% | Yes |
| 211110030002 | Block Group 2, Census Tract 30, Jefferson County, Kentucky | Louisville/Jefferson County Metro Government | 88% | 42% | Yes | 45% | 17% | Yes | 0% | 6% | No |
| 211110049001 | Block Group 1, Census Tract 49, Jefferson County, Kentucky | Louisville/Jefferson County Metro Government | 42% | 42% | No | 26% | 17% | Yes | 20% | 6% | Yes |
| 211110049002 | Block Group 2, Census Tract 49, Jefferson County, Kentucky | Louisville/Jefferson County Metro Government | 71% | 42% | Yes | 56% | 17% | Yes | 0% | 6% | No |
| 211110049003 | Block Group 3, Census Tract 49, Jefferson County, Kentucky | Louisville/Jefferson County Metro Government | 44% | 42% | Yes | 23% | 17% | Yes | 1% | 6% | No |
| 211110059011 | Block Group 1, Census Tract 59.01, Jefferson County, Kentucky | Louisville/Jefferson County Metro Government | 71% | 42% | Yes | 77% | 17% | Yes | 0% | 6% | No |

 Denotes AC with potential Minority or Low-Income EJ Population



EJ ANALYSIS

ATTACHMENT C: EJ WORKING GROUP MEETING MATERIALS



July 15, 2021

RE: Improve 64 Project (Des. Number 1900162) – EJ Working Group Invitation

Dear Potential Environmental Justice (EJ) Working Group Member,

In an effort to increase connectivity and improve regional mobility, the Indiana Department of Transportation (INDOT) is making substantial investments in Southern Indiana’s transportation infrastructure. As a key member of the community, you are being invited to join the Environmental Justice (EJ) Working Group for one of the regional initiatives, the Improve 64 Project. The project includes work on I-64 from US 150 to Spring Street in New Albany. Additional work is also anticipated on I-265 from I-64 to Green Valley Road and US 150 from I-64 to the area near Old Vincennes Road.

EJ involves recognizing and addressing disproportionately high and adverse effects of an agency’s programs, policies and activities on minority and low-income populations. This process includes the full, fair and meaningful participation of potentially affected communities through the transportation decision-making process. The Improve 64 Project includes a multi-faceted outreach program designed to ensure full and fair participation by all potentially affected EJ communities.

Although INDOT and the Federal Highway Administration (FHWA) will be the final decision makers regarding the project, the EJ Working Group, along with other key stakeholders, will serve in an important advisory role. As an EJ Working Group member, you will meet at several key points throughout the project to ensure that adequate attention is given to environmental justice matters.

Your input will be key in reaching the group’s overarching goals, which include identifying potential EJ communities and the possible impacts this project may cause; addressing the concerns of residents and stakeholders within identified EJ communities and determining the best outreach strategies to connect with community members.

Our first meeting will be held virtually on August 3, 2021 from 1:30-3 pm through Zoom. Meeting information is listed below and will also be sent in an Outlook meeting request.

| | |
|--------------------------|---|
| Meeting Link: | https://bit.ly/Improve64_EJ |
| Call-In No. (if needed): | (888) 475-4499 |
| Meeting ID No.: | 898 6949 3008 |

We anticipate having two additional meetings over the next one and a half years during the project planning process. Possible future meeting times and locations will be discussed at the upcoming meeting.

If you are interested in participating, please respond to me by email at kgillette@hntb.com on or before July 29, 2021. Thank you for your consideration.

Sincerely,

Kia M. Gillette
HNTB
Improve 64 Project Environmental Lead

Attachments:
EJ Working Group Invitee List
Project Area Map



855-INDOT4U (1-855-463-6848)
INDOT4U.com



Environmental Justice (EJ) Working Group Invitees:

- Center for Neighborhoods – Mellone Long, Executive Director
- Clean Socks Hope – Mike Donahue, Member
- Clean Socks Hope – Jeff Minton, Executive Director
- Community Action of Southern Indiana – Phil Ellis, Executive Director
- Community Foundation of Southern Indiana – Linda Speed, President & CEO
- Develop New Albany – Ysha Bass, Board Member/Business Owner
- Develop New Albany – Heather Trueblood, Program Coordinator
- Floyd County Historian – David Barksdale, Historian
- Floyd County Planner – Justin Tackett, Planner
- Hope Southern Indiana – Angela Graf, Executive Director
- Hope Southern Indiana – Denise McKnight, Assistant Director
- Jeffersonville Urban Enterprise Association – Les Merkley, City of Jeffersonville Legal Counsel/Staff Member of JUEA
- Kentuckiana Hispanic Business Council – Miguel Hampton, Chairman
- Leadership Southern Indiana – Ian Williams, Program Coordinator
- NAACP (Louisville Branch) – Raoul Cunningham, President
- New Albany Housing Authority – David Duggins, Executive Director
- New Albany Urban Enterprise Zone – Tonya Fischer, Manager
- New Albany/Floyd Co. NAACP – Nicole Yates, President
- New Albany/Floyd Co. Schools – Sharon Jones, Director of Student Programs and Cultural Responsiveness
- Pleasant Ridge Neighborhood Association – Josh Craven, President
- St Elizabeth's Catholic Charities – Mark Casper, Agency Director
- St. Mark's United Church – Rev. John Manzo, Senior Pastor
- St. Stephen Baptist Church (Louisville Campus) – Geneva Nelson, Christian Education Director
- St. Stephen Baptist Church (Southern Indiana Campus) – Kevin Cosby, Senior Pastor
- Wesley Chapel United Methodist – Tony Alstott, Lead Pastor



855-INDOT4U (1-855-463-6848)
INDOT4U.com

Meeting Minutes

Meeting Description: ENVIRONMENTAL JUSTICE (EJ) WORKING GROUP MEETING #1

Meeting Date: Tuesday, Aug. 3, 2021, 1:30 to 3 pm

Location: Virtual/Via Zoom

Attendees:

| Name | Organization | | Name | Organization |
|----------------|----------------------------|--|---------------------|----------------------------|
| Nicole Yates | Floyd County NAACP | | Kari Carmany-George | FHWA |
| Mellone Long | Center for Neighborhoods | | Greg Prince | INDOT |
| Kyanna Wheeler | INDOT | | Laura Hilden | INDOT |
| Brandon Miller | INDOT | | Bob Tally | INDOT |
| Terri Fair | INDOT | | Dan Thatcher | Project Team HNTB |
| Tim Miller | Project Team, HNTB | | Kia Gillette | Project Team, HNTB |
| Kym Caird | Project Team, HNTB | | Berry Craig | Project Team, C2 Strategic |
| Mindy Peterson | Project Team, C2 Strategic | | Nicole Childress | Project Team, C2 Strategic |

Presenters:

Tim Miller, Public Involvement Lead, HNTB

Dan Thatcher, Project Manager, HNTB

Kia Gillette, Environmental Lead, HNTB

I. Welcome

Tim Miller (TM) welcomed the group, provided an overview of the virtual meeting, encouraged comments throughout the presentation and introduced presenters and Project Team members.

II. Purpose of Meeting/Role of EJ Working Group

TM told the group the purpose of the meeting is to introduce the Improve 64 project, receive feedback and answer questions from Environmental Justice Working Group (EJ WG) members. He also explained the EJ WG serves as a link to the community, sharing project information, providing feedback and serving as a sounding board throughout the project, especially for issues related to low-income or minority populations.

III. Project Overview

Dan Thatcher (DT) provided an overview of Improve 64, first discussing the investment INDOT is making in the region. Over 65 projects with construction costs totaling over \$400 million are planned for construction in the next five years in Floyd and Clark counties.

A map was shared of the project area. The project includes improvements on I-64 from US 150 to Spring Street in New Albany. Additional work is anticipated on I-265 from I-64 to Green Valley Road and US 150 from I-64 to the area near Old Vincennes Road. Insufficient capacity results in congestion on I-64 and I-265, especially during a.m. and p.m. peak hours. This results in slow travel speeds, intermittent slowing and stopping and a high frequency of rear-end and sideswipe crashes. DT explained the range for the Level of Service (LOS), A to F. He offered examples and shared maps to show the current LOS and the degrading LOS in 25 years if no improvements are made with an expanded area of LOS F. The



purpose of Improve 64 is to reduce congestion and improve traffic flow in the project area. The goal is a minimum LOS D (stable traffic flow), where possible. LOS D is busy, but traffic is flowing – similar to rush hour.

DT also outlined expected project improvements including added travel lanes, pavement replacement, bridge replacement and rehabilitation, updated drainage and more. He highlighted one key improvement to reconfigure the I-64/I-265 interchange, moving the left-hand exit to the right to prevent weaving and improve safety. Minimal right of way is expected for the project improvements.

DT explained that the existing number of lanes in each direction on I-64 and I-265 would be maintained during the majority of construction. He outlined the intermittent and short-term closures anticipated and said a Transportation Management Plan (TMP) would be developed in coordination with area stakeholders including emergency responders.

IV. Environmental Study

Kia Gillette (KG) provided an overview of the environmental study that is underway. The National Environmental Policy Act (NEPA) requires federal agencies to assess environmental effects of their projects before making decisions. This includes impacts to human and natural environments including cultural resources, wetlands and streams, endangered species, noise and more. Public involvement is a key part of the process and will include public information meetings this fall and in fall 2022. A public hearing and formal comment period are expected in early 2023. In addition to the EJ WG, a Community Advisory Committee (CAC) has been formed to provide input on the study.

A project website (Improve64.com) is in development and project information will be shared on INDOT Southeast social media channels (Facebook and Twitter).

A project schedule was shared with construction starting in summer 2024 and expected to take two years to complete.

KG explained that environmental justice (EJ) is the fair treatment and meaningful involvement of all people regardless of race or income. It's important to identify and address any high or adverse effects on EJ populations and identify measures to avoid, minimize or mitigate (if necessary) disproportionate impacts. EJ communities will be engaged throughout the project.

KG paused for questions. Nicole Yates (NY) travels Cherry Street often and was concerned about what closures would look like and possible impacts on nearby Scribner Middle School. DT said the school and other needs would be considered for the temporary closure and restrictions could include closures only when school is not in session. If impacts are too numerous, working in phases could be an option to allow for a partial closure instead of a full closure.

V. EJ Working Group Feedback and Questions

KG shared a list of all invited EJ WG members and asked for input from meeting attendees. TM also indicated he would provide the CAC invitees list to NY and Mellone Long (ML) for review and feedback.

NY suggested adding more west Louisville representatives to the EJ WG, especially with many residents crossing the Sherman Minton to shop at Kroger and Target (State Street) and Wal Mart (Grant Line Road). She suggested the YMCA in west Louisville, the Louisville Mayor's office, community centers, schools in west Louisville, the Louisville Urban League, TARC, Housing Authority and additional black churches including Howard Chapel and Bethel Church.

KG shared maps of where low income and minority communities have been identified. NY and ML agreed the maps appear to be accurate. NY also said there's a high minority population in Jefferson Gardens apartments. KG agreed to add road names to the maps and share them with presentation slides and meeting summary.

KG also asked for suggestions to engage EJ communities. NY and ML both stressed the importance of relying on trusted partners – community centers, churches, Urban League, etc. ML suggested taking advantage of "Park Days" at area parks like Victory Park and Shelby Park. She said a QR code could encourage feedback at a later time.

Improve 64 Meeting Minutes – Environmental Justice Working Group Meeting #1

NY also suggested better explaining the term EJ when making outreach. She also said it's important to be transparent about closures and to be honest to build trust.

NY suggested Americana Community Center, La Casita, Catholic Charities and the Mayor's Office of Globalization (translation services) to assist with outreach. St. Mary's Church in New Albany has a Hispanic service.

NY also suggested Harvest Homecoming, World Fest, KY State Fair and job fairs as possible outreach events. ML suggested radio as a strong outreach tool.

The EJ WG is expected to meet again in early 2022 and late 2022. Members indicated a preference of virtual or in-person would depend on COVID guidelines at the time.

TM thanked members for their time and input and said additional questions or feedback could be directed to him or KG.

From: [Kia Gillette](#)
To: [Kia Gillette \(kgillette@hntb.com\)](#)
Cc: [Greg Prince \(gprince@indot.in.gov\)](#); [Kyanna Wheeler](#); "[anwalker1@indot.in.gov](#)"; [Timothy Miller](#); [Dan Thatcher](#); [Kelly Scott \(kescott@HNTB.com\)](#); [Stacey Osburn](#); "[Emma Collins](#)"
Bcc: INDOT Improve 64 Project (Des. No. 1900162) - CAC/EJ Working Group Meeting & Public Information Meeting
Wednesday, July 27, 2022 2:05:00 PM

Meeting Invitee Email Addresses Redacted

Subject:
Date:
Attachments: [image001.png](#)
[image002.png](#)
[image003.png](#)
[image004.png](#)
[Improve 64 PIM #1 Flier.pdf](#)
[Improve64_CACMeetingNo1Minutes_20210803_FINAL.pdf](#)
[Improve64_CACMeetingNo1Presentation_20210803_FINAL.pdf](#)
[Improve64_EJWGMeetingNo1Minutes_20210803_FINAL.pdf](#)
[Improve64_EJWGMeetingNo1Presentation_20210803_FINAL.pdf](#)

Dear Potential Improve 64 Community Advisory Committee or Environmental Justice Working Group Member,

The Indiana Department of Transportation (INDOT) is planning significant infrastructure improvements for Floyd County through the Improve 64 project.

Improve 64 is part of INDOT's strategy to reduce congestion as well as improve safety and mobility in southeast Indiana. Planned improvements will address the recent growth of communities served by I-64 and support continued economic development in the region.

I am reaching out to you today to invite you to participate as an advisor through the project's Community Advisory Committee (CAC) or Environmental Justice (EJ) Working Group. Meetings were held last August at which time you or your organization were suggested as a good addition to one of these groups. Attached please find the meeting minutes and presentations from the first meetings.

The Project Team has spent the last several months reviewing materials and looks forward to sharing more information about the project at our next meeting on Tuesday, August 9 at Scribner Middle School. Additional information about time and location can be found below.

[Improve 64 CAC/EJ Working Group Meeting](#)
August 9, 2022, 10:30 a.m. – 12:00 p.m.

Scribner Middle School (enter through Door #1)
910 Old Vincennes Rd, New Albany, IN 47150

Your participation will not only help the Improve 64 Project Team successfully inform the public and increase project awareness but allow you to actively engage in the project by providing important feedback.

The Project Team will also hold its first public meeting at Scribner Middle School on August 17. Additional information about time and location can be found below and is attached in a flier. Please feel free to share information about the public meeting with interested members of the community.

Improve 64 Public Information Meeting

August 17, 2022

Doors open: 6:00 p.m.

Presentation: 6:30 p.m.

Scribner Middle School

910 Old Vincennes Rd, New Albany, IN 47150

If you have any questions, please don't hesitate to contact me. Please let me know if you are not interested in receiving information about the project and we will remove you from the contact list.

Thank you,
Kia

Kia Gillette

Environmental Project Manager

Tel (317) 917-5240 Cell (317) 695-0825 Email kgillette@hntb.com

HNTB CORPORATION

111 Monument Circle, Suite 1200 | Indianapolis, IN 46204 | www.hntb.com

 **100+ YEARS OF INFRASTRUCTURE SOLUTIONS**





Original Environmental Justice (EJ) Working Group Invitees:

- Center for Neighborhoods – Rob Mosma, Planning Director
- Clean Socks Hope – Jeff Minton, Executive Director
- Community Action of Southern Indiana – Phil Ellis, Executive Director
- Community Foundation of Southern Indiana – Linda Speed, President & CEO
- Develop New Albany – Ysha Bass, Board Member/Business Owner
- Develop New Albany – Heather Trueblood, Program Coordinator
- Hope Southern Indiana – Angela Graf, Executive Director
- Jeffersonville Urban Enterprise Association – Les Merkley, City of Jeffersonville Legal Counsel/Staff Member of JUEA
- Kentuckiana Hispanic Business Council – Miguel Hampton, Chairman
- Leadership Southern Indiana – Chris Carruthers, Director of Business Development
- New Albany Housing Authority – David Duggins, Executive Director
- New Albany Urban Enterprise Zone – Tonya Fischer, Manager
- New Albany/Floyd Co. NAACP – Nicole Yates, President
- New Albany/Floyd Co. Schools – Samantha Pitts, Director of Student Programs and Cultural Responsiveness
- Pleasant Ridge Neighborhood Association – Josh Craven, President
- St Elizabeth's Catholic Charities – Mark Casper, Agency Director
- St. Mark's United Church – Rev. John Sterrett, Senior Pastor
- St. Stephen Baptist Church (Louisville Campus) – Geneva Nelson, Christian Education Director
- St. Stephen Baptist Church (Southern Indiana Campus) – Kevin Cosby, Senior Pastor
- Wesley Chapel United Methodist – Tony Alstott, Lead Pastor

**Some original invitees may have changed positions.*



855-INDOT4U (1-855-463-6848)
INDOT4U.com



Additional Environmental Justice (EJ) Working Group Invitees:

- Americana Community Center – Emilie Dyer, Executive Director
- Atkinson Elementary School – Stephanie Nutter, Principal
- Atkinson Elementary School – Monica Hunter, Assistant Principal
- Beechmont Community Center – Rebekah Kammeyer, Supervisor
- Bethel Baptist Church – Joique Bellis, Pastor
- Brandeis Elementary School – Shervita West, Principal
- Brandeis Elementary School – Pamela Hill, Assistant Principal
- Byck Elementary School – Carla Kolodey, Principal
- Byck Elementary School – MaryBeth Funk, Assistant Principal
- California Community School – Laneisha Beasley, Supervisor
- Carter Traditional Elementary – James Wyman, Principal
- Catholic Charities of Louisville – Darian Decker, Principal
- Central High School – Tamela Compton, Principal
- Floyd County Planner – Nic Creevy, Planner
- Jefferson County Public Schools – Ken Stites, Transportation Director
- Jefferson County Public Schools – John Custis, Family Resource Center Coordinator (Maupin Elementary)
- Kentuckiana Regional Planning and Development Agency – Greg Burress, Community Outreach Specialist
- La Casita Center – Karina Barillas, Executive Director
- Louisville Central Community Center – Kevin Fields, President/CEO
- Louisville Metro Housing Authority – Terri Thornton, Customer Service/Ombudsman
- Louisville Metro Housing Authority – Alyss Brindley, Customer Service/Ombudsman
- Louisville Salvation Army – Tony Bellis, Captain
- Louisville Urban League – Peggy Bennett, Executive Assistant to President
- Lyman T. Johnson Traditional Middle – Keith Cathey, Principal
- Lyman T. Johnson Traditional Middle – Ebony Booker, Assistant Principal 7th Grade
- Lyman T. Johnson Traditional Middle – Rajwinder Kaur, Assistant Principal 8th Grade
- Lyman T. Johnson Traditional Middle – Jodi Shepherd, Assistant Principal 6th Grade
- Martin Luther King Jr. Elementary School – Marlon Miller, Principal
- Martin Luther King Jr. Elementary School – Candice Crawford, Assistant Principal
- Maupin Elementary – Charita Kimbrough, Principal
- Mayor’s Office of Globalization – Amos Izerimana, Program Manager
- Molly Leonard Portland Community Center – Denice Wallace, Supervisor
- NIA Center – Duane Voss, Assistant
- Portland Elementary School – Sheri Kiser, Assistant Principal
- Portland Elementary School – Michelle Perkins, Principal
- Salvation Army, New Albany – Catherine Fitzgerald, Captain
- Shawnee Community Center – Barbara Broughton, Supervisor
- Southwick Community Center – Rene Douglass, Supervisor
- St. Mary’s Church – Sandra Velazquez, Communications and Facilities (Bilingual)
- St. Mary’s Church – Ruth Houghton, Volunteer Coordinator



855-INDOT4U (1-855-463-6848)
INDOT4U.com

- TARC – Aida Copic, Director of Planning
- The Academy @ Shawnee – Kymberly Rice, Principal
- Western Middle School – Hollie Smith, Principal
- Western Middle School – Clay Ryan, Assistant Principal
- Wheatley Elementary – Keisha Fulson, Principal
- Wheatley Elementary – Sara Alvey, Assistant Principal
- Wheatley Elementary – Rhonda Hedges, Assistant Principal
- YMCA West Louisville – Kristina Kluesner, District Development Director
- Young Elementary School – Erica Lawrence, Principal
- Young Elementary School – Katie Blieden, Assistant Principal
- Young Elementary School – Jamie Williams, Secretary

Meeting Minutes

Meeting Description: COMMUNITY ADVISORY COMMITTEE/ENVIRONMENTAL JUSTICE WORKING GROUP

Meeting Date: Tuesday, Aug. 9, 2022, 10:30 a.m. to 12:00 p.m.

Location: Scribner Middle School

Attendees:

| Name | Organization | | Name | Organization |
|------------------|------------------------------------|--|-----------------|----------------------------------|
| Samantha Pitts | New Albany/Floyd Co. Schools | | Erin Goodlett | St. Elizabeth Catholic Charities |
| Dirk Gowin | Louisville Metro Government | | Rob Monsma | Center for Neighborhoods |
| Scott Wood | City of New Albany Plan Commission | | Dave Barksdale | Floyd County Historian |
| Michael Denny | Ivy Tech | | Larry Summers | New Albany City Engineer |
| John Rosenbarger | City of New Albany | | Natalie Garrett | INDOT |
| Greg Prince | INDOT | | Kevin Sears | INDOT |
| Bob Tally | INDOT | | Kyanna Wheeler | INDOT |
| Dan Thatcher | Project Team HNTB | | Kia Gillette | Project Team, HNTB |
| Tim Miller | Project Team, HNTB | | Stacey Osburn | Project Team HNTB |
| Mallory Duncan | Project Team, HNTB | | Emma Collins | Project Team, C2 Strategic |

Presenters:

Tim Miller, Public Involvement, HNTB

Dan Thatcher, Project Manager, HNTB

Kia Gillette, Environmental Lead, HNTB

I. Welcome

Tim Miller (TM) welcomed the group, provided an overview of the meeting, encouraged comments throughout the presentation and introduced presenters and Project Team members.

II. Project Overview

Dan Thatcher (DT) told the group the purpose of the meeting is to provide an update on the Improve 64 project, receive feedback and answer questions from Community Advisory Committee (CAC) and Environmental Justice Working Group (EJ WG) members. DT provided an overview of INDOT’s investment in Southern Indiana, noting that it plans to spend over \$400 million in construction projects in Floyd and Clark Counties with Improve 64 as part of that investment. He also discussed the project’s purpose and need to address insufficient freeway capacity and deteriorating pavement by reducing congestion, improving traffic flow and updating the pavement conditions. DT explained the range for the Level of Service (LOS), A to F. The goal is a minimum LOS D which is busy, but traffic is flowing. DT provided LOS maps of the project area today, in 2046 with no build and an improved condition in 2046.

DT also provided details on the project elements with maps. These improvements included added travel lanes on I-64 in both directions from US 150 to Cherry Street; replacing, rehabilitating and widening bridges; replacing or rehabilitating pavement; updating drainage structures; adding and replacing signs, pavement markings and lighting; and with minimal



anticipated right of way. With an emphasis on work zone safety, DT provided an overview of the maintenance of traffic goals and Transportation Management Plan (TMP).

III. Environmental Review Process

Kia Gillette (KG) provided an overview of the environmental study that is underway. The National Environmental Policy Act (NEPA) requires federal agencies to assess environmental effects of their projects before making decisions. This includes impacts to human and natural environments including cultural resources, wetlands and streams, endangered species, noise and more.

KG also discussed the upcoming noise analysis that is required per INDOT's 2017 Traffic Noise Analysis Procedure (INDOT's Noise Policy). She explained that noise analysis will identify noise impacts and locations of possible barriers. INDOT also considers community input when determining if noise barriers are built. Noise surveys and public meetings are anticipated September/October 2022.

KG explained that environmental justice (EJ) is the fair treatment and meaningful involvement of all people regardless of race or income. For the Improve 64 project, EJ refers to how the project may impact or benefit low-income and minority communities. EJ communities will continue to be engaged throughout the project. KG walked attendees through the boards outlining where census data identifies EJ communities and asked attendees to provide any feedback on missing areas. KG detailed the timeline of this engagement, which includes the first CAC/EJWG meeting on August 3, 2021; the meeting today, the upcoming public meeting on August 17, 2022. The next CAC/EJWG meeting is anticipated in Fall 2023.

KG detailed what the project team learned at the first EJ WG meeting, including the need for more West Louisville representation; the importance of explaining with EJ means, and the need for transparency on road closures. At the first EJ WG meeting, attendees generally agreed with low-income and minority communities identified based on census data. In response to EJ WG input, INDOT has reached out to more than 50 additional organizations/individuals (including many in West Louisville), inviting them to be a member of the EJ WG and participate in the second meeting as well as providing fliers for the public meeting. A public notice was published in the local newspaper, social media posts made announcing the public meeting, more than 12,000 postcards were mailed to adjacent and nearby zip codes, and more than hard copy 1,500 fliers were distributed to grocery stores, community centers, apartment complexes and other locations within the community. Fliers in English and Spanish were distributed. KG asked if the project team should translate project materials into other languages and attendees were not aware of any other languages that would be helpful.

IV. Anticipated Schedule

TM walked the attendees through the anticipated schedule for the project. The project is currently in the preliminary design and environmental review phase. A public hearing is anticipated in Fall 2023. Final design is expected Fall 2024 with construction letting Fall 2024 and construction starting late 2024. The majority of construction is expected to occur in 2025 and 2026. The project is expected to be substantially completed by late 2026.

V. Public Comments

TM discussed the current public comment period. He noted that formal comments will be accepted through September 2, 2022. An additional official comment period will also be available in liaison with the Fall 2023 public hearing. He noted that all comments will be considered and addressed in the final environmental document. TM detailed the avenues for public comment, including verbal comments and comment forms at the public meeting, email, hard copy by U.S. mail. He noted that formal comments will be accepted through September 2, 2022.

TM also highlighted the newly launched Improve 64 website, [Improve64.com](https://improve64.com).

VI. Discussion

When asked about the westbound (WB) I-265 left-side exit to I-64 eastbound (EB), DT explained that layout meets driver expectation since I-265 came to a T at I-64. INDOT will be adding a lane to each interchange ramp to assist with traffic flow.

Attendees asked about the opportunity to address traffic on I-265 past the current project limits. DT shared that INDOT is considering those potential changes as it evaluates an expansion plan that looks at the totality of all projects and the available budget. DT also shared that the Improve 64 modeling indicates that the changes will improve the level of service and lessen the back up in this area.

DT also assured attendees that school calendars and bus routes will be considered when developing TMP plans. Attendees noted that if Cherry Street and Captain Frank Road are closed at the same time, it would shut down neighborhood access.

When discussing maintenance of traffic on interchange ramps, DT shared that INDOT will be adding a lane on the ramps, but they will likely remain open during construction without hard closures. DT also shared the project includes adding concrete restoration on the Spring Street ramps. Transit routes will be considered during the development of the TMP.

TARC was suggested as a good resource for their users and communicating to residents. KG shared that a TARC representative was invited to this meeting but unable to attend. KIPDA may also have information regarding EJ communities.

A question was raised about local street access. DT shared short-term closures may occur for certain construction activities and any local detour routes will be identified.

An attendee asked whether INDOT has considered a dual left turn at State Street. DT shared that it has and would be coordinated further with district traffic as a potential future separate project.

The question was raised whether INDOT would consider including signage along the interstate indicating the historic downtown, similar to Madison. The project team noted that the sign process is in its preliminary stages and the request would be noted.

When asked about Section 106 and historic properties, KG noted that the project team is determining the project's effects on the eight identified historic properties and drafting the effects report now.

An attendee noted that some Louisville residents may not travel to the public meeting and noted that they would benefit from boards and information being available at the Walmart and Kroger on State Street, as well Portland Branch Library, Shawnee Library, Shawnee Community Center and Portland Community Center. The project team plans to reach out to these locations to provide materials and information.

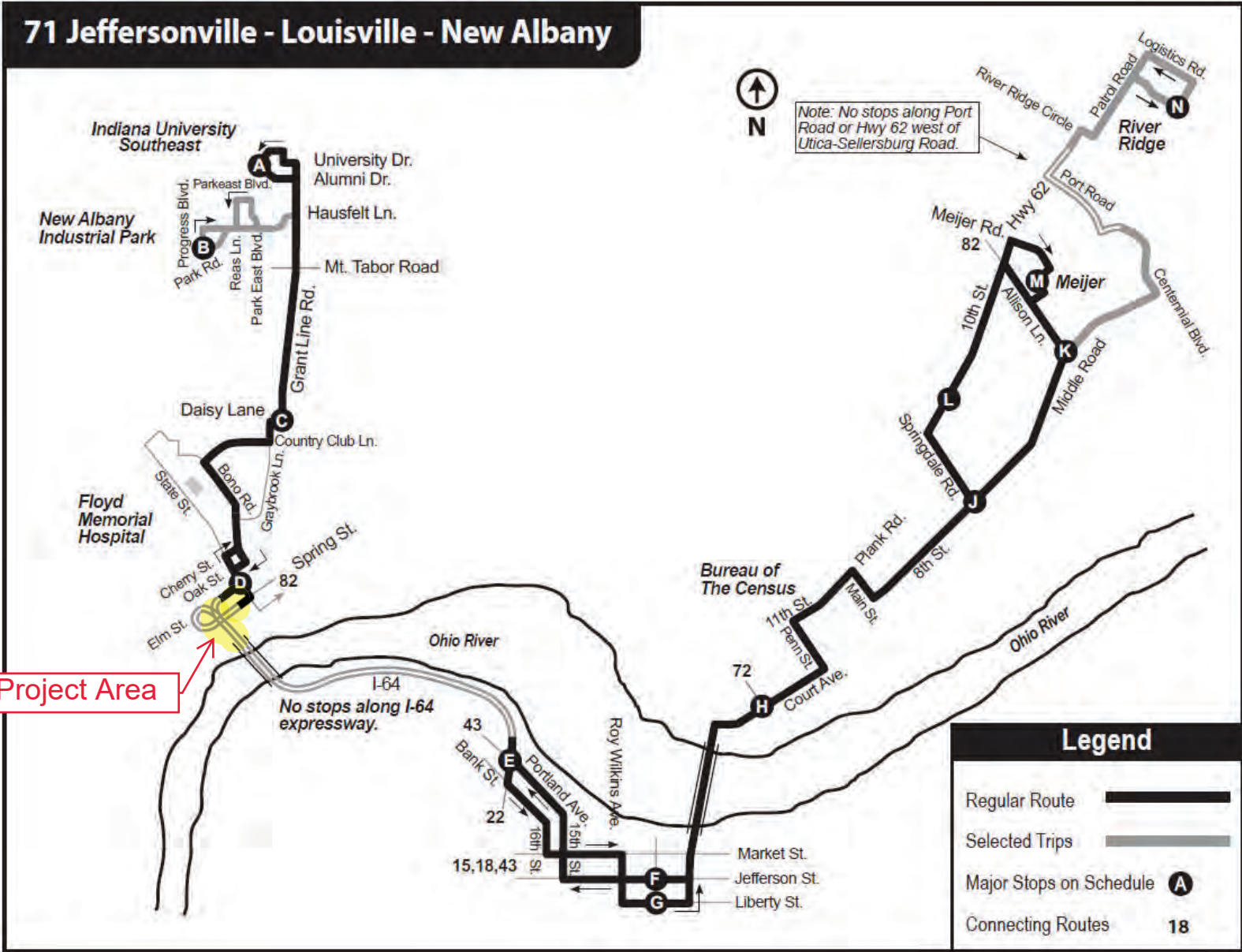
TM thanked members for their time and input and said additional questions or feedback could be directed to him or KG.



EJ ANALYSIS

ATTACHMENT D: TRANSIT INFORMATION

71 Jeffersonville - Louisville - New Albany



Improve 64 Project Area

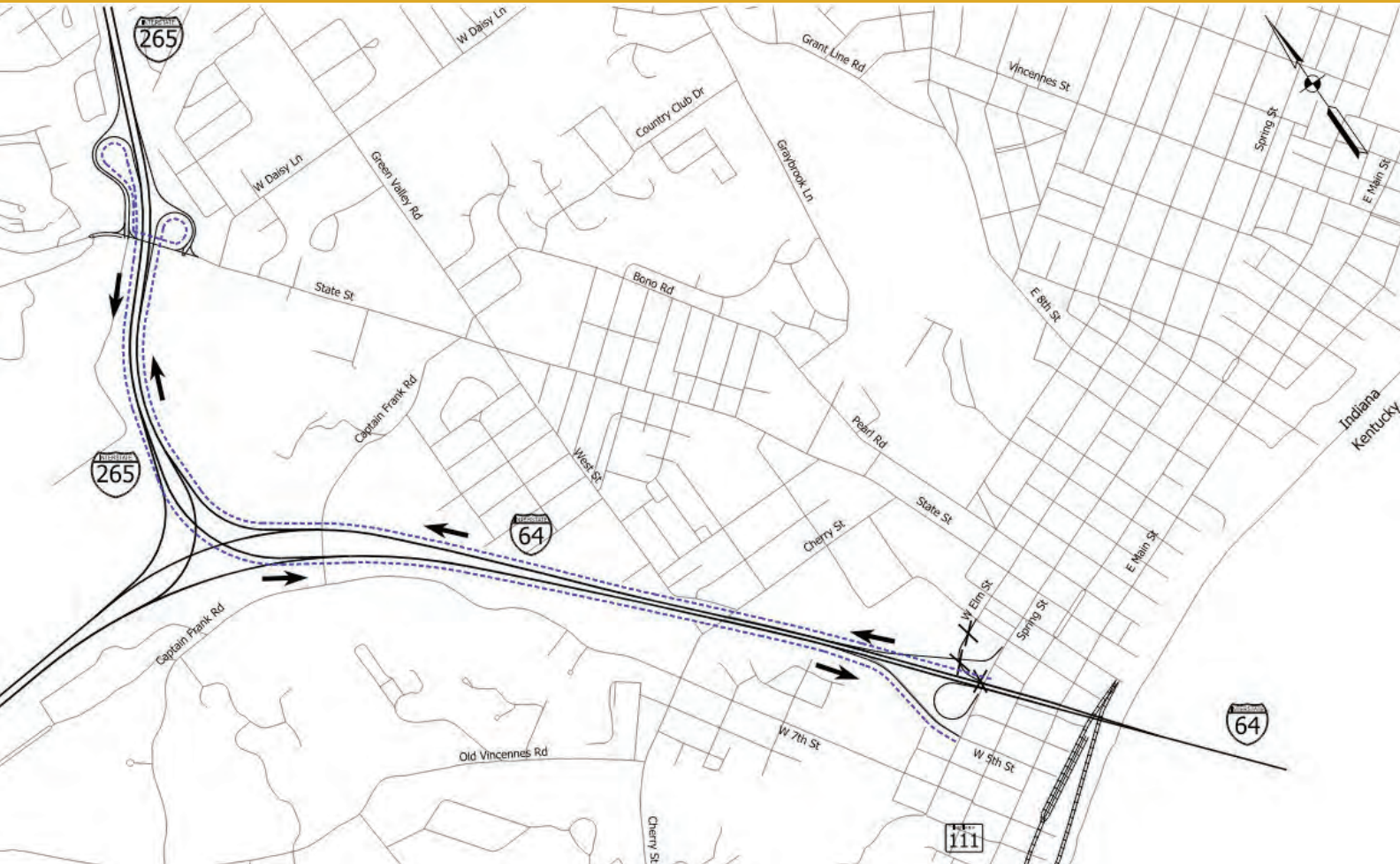
Detours



I-64 EB Exit Ramp to
Spring Street Ramp
Closure



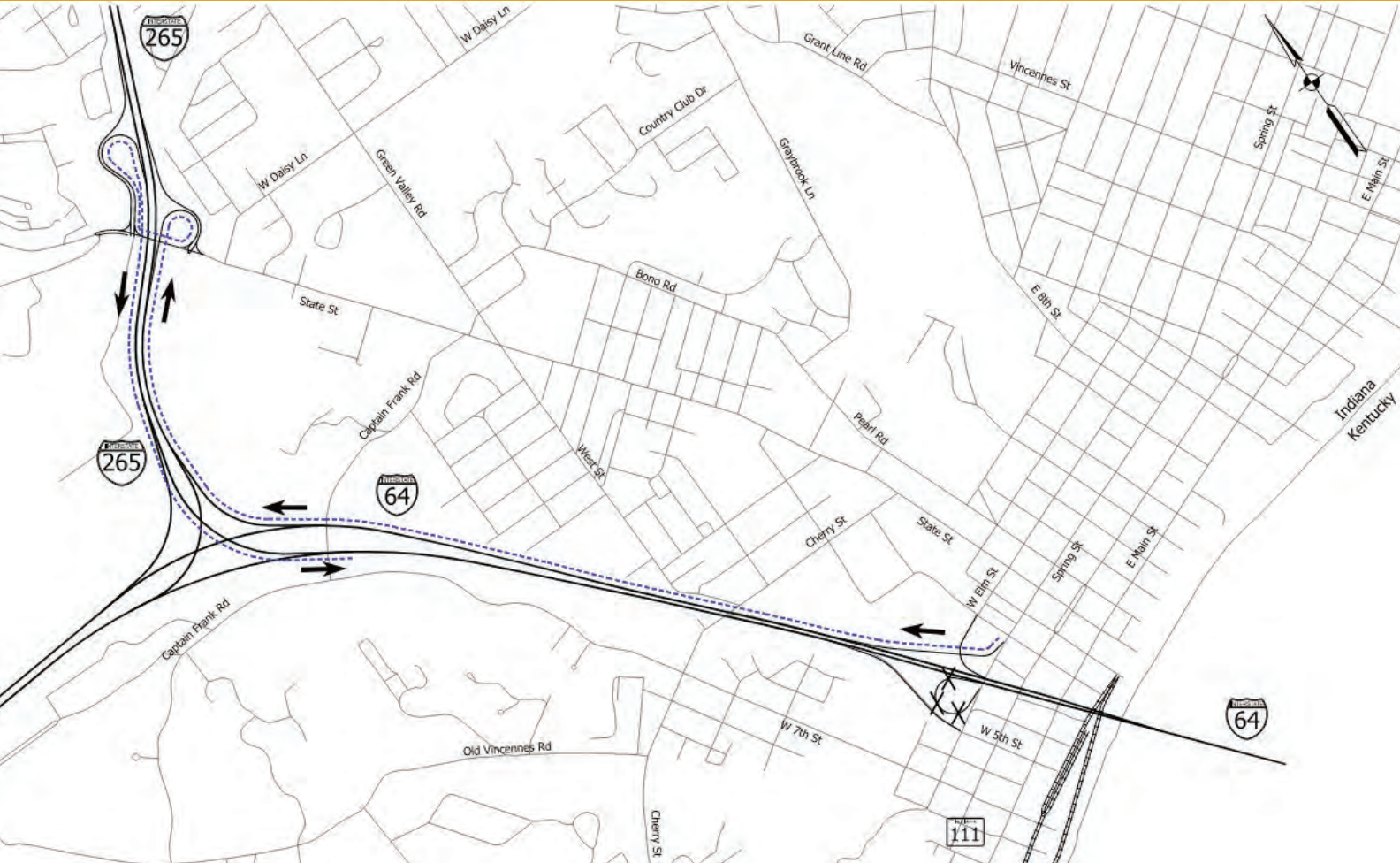
Detours



I-64 WB Exit Ramp to
Spring Street Ramp
Closure



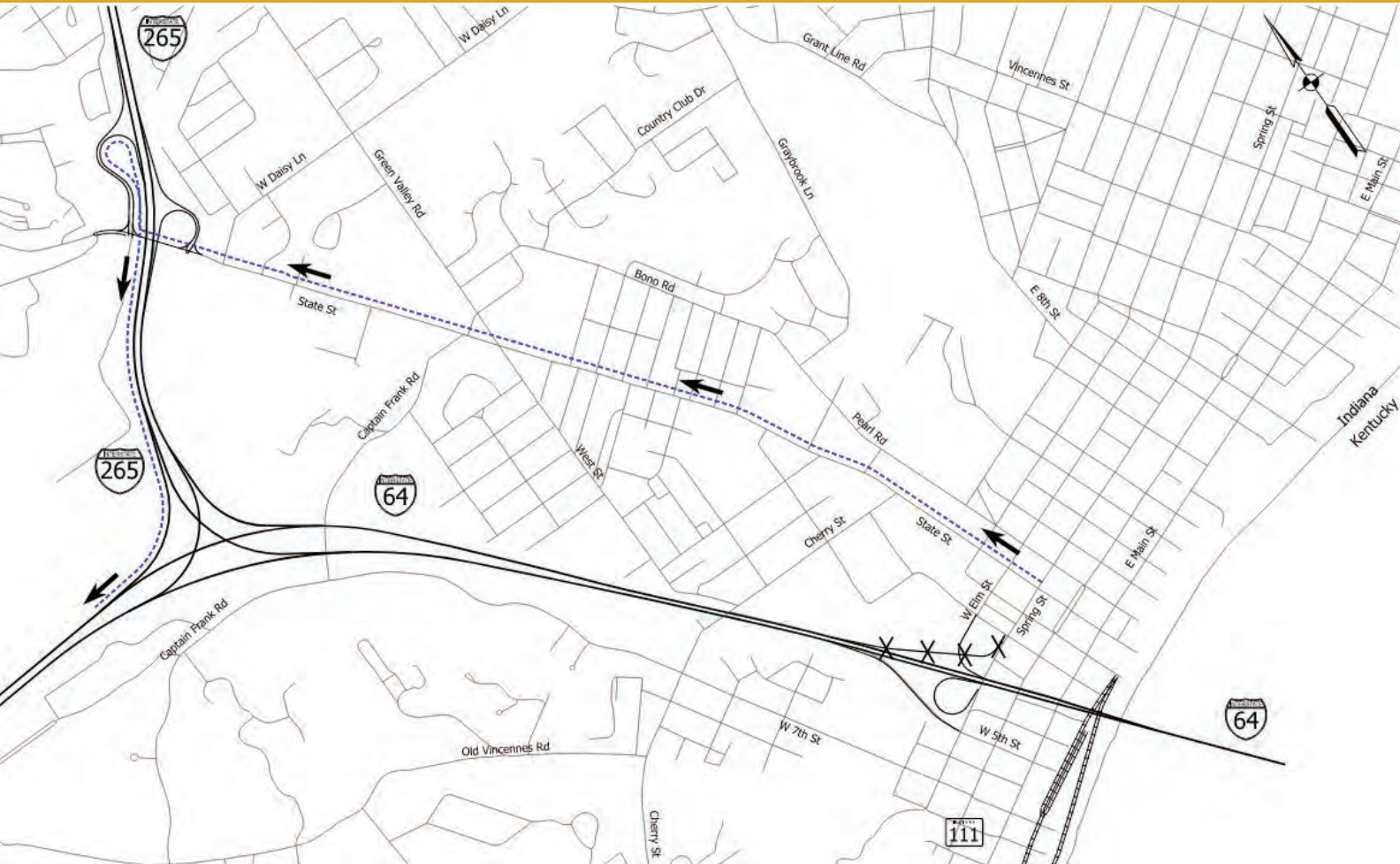
Detours



Spring Street Entrance Ramp to I-64 EB Ramp Closure



Detours



Spring Street Entrance
Ramp to I-64 WB
Ramp Closure



From: [Douglas Homan](#)
To: [Lockhart, John](#)
Cc: [Mike Ernst](#); [Kia Gillette](#)
Subject: RE: Contact Information
Date: Thursday, August 31, 2023 1:02:05 PM

Yes. Closer to the project and construction TMP stakeholders will be made aware of anticipated phase switches.

Have a GREAT Day, † † †

Douglas Homan, PE

Transportation Department

Tel (317) 917-5305 Cell (386) 689-4165 Email dhoman@hntb.com

From: Lockhart, John <jlockhart@ridetarc.org>
Sent: Thursday, August 31, 2023 12:45 PM
To: Douglas Homan <dhoman@HNTB.com>
Subject: RE: Contact Information

Douglass,

Thank you for the information. As we get closer to the actual project start date I will get it to my operations managers and we will get the detours in our system. Can I assume there will be additional follow up information as this project gets closer to starting? Thank you.

Regards,

JOHN W LOCKHART

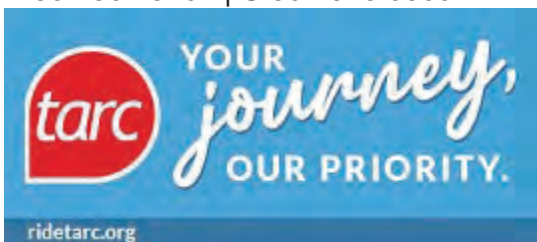
Director of Transportation

jlockhart@ridetarc.org

Transit Authority of River City

1000 W. Broadway | Louisville, KY 40203

P 502.561.5167 | C 502.548.0509



From: Douglas Homan <dhoman@HNTB.com>

Sent: Thursday, August 31, 2023 12:26 PM
To: Lockhart, John <jlockhart@ridetarc.org>
Subject: [External Message]RE: Contact Information

Good afternoon John,

I am reaching because TARC Route 71 will be impacted during our Spring Street ramp closures. I am making sure TARC is aware and see if there are any concerns.

https://www.ridetarc.org/wp-content/uploads/2021/11/Rt_71pocket.pdf

I have attached the power point presentation that was presented at the last TMP Team meeting for the stakeholders for information.

Have a GREAT Day, † † †

Douglas Homan, PE

Transportation Department

Tel (317) 917-5305 Cell (386) 689-4165 Email dhoman@hntb.com

From: Lockhart, John <jlockhart@ridetarc.org>

Sent: Thursday, March 23, 2023 8:55 AM

To: Douglas Homan <dhoman@HNTB.com>

Subject: Contact Information

Douglas,

I received your message through our TARC Listens messaging board. Please feel free to reach out to me regarding any DOT projects that may have an impact on our bus services. I really appreciate being added to the project group. I will plan to attend the meeting scheduled for May 5th, 2023. Thank you.

Regards,

JOHN W LOCKHART

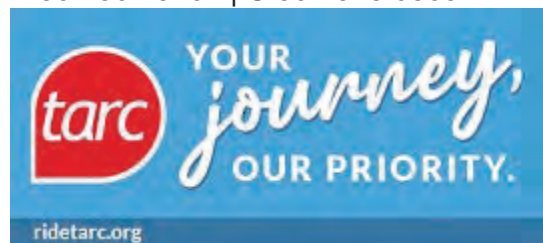
Director of Transportation

jlockhart@ridetarc.org

Transit Authority of River City

1000 W. Broadway | Louisville, KY 40203

P 502.561.5167 | C 502.548.0509





EJ ANALYSIS

ATTACHMENT E: CENSUS DATA

Community of Comparison Data Table- B03002

| Label | Clark County, Indiana | | Floyd County, Indiana | | Harrison County, Indiana | | Town of Clarksville, Indiana | | City of New Albany, Indiana | | City of Jeffersonville, Indiana | | Louisville/Jefferson County metro government, Kentucky | |
|--|-----------------------|-----------------|-----------------------|-----------------|--------------------------|-----------------|------------------------------|-----------------|-----------------------------|-----------------|---------------------------------|-----------------|--|-----------------|
| | Estimate | Margin of Error | Estimate | Margin of Error | Estimate | Margin of Error | Estimate | Margin of Error | Estimate | Margin of Error | Estimate | Margin of Error | Estimate | Margin of Error |
| Total: | 117,410 | ***** | 77,879 | ±23 | 40,164 | ±23 | 21,825 | ±439 | 36,730 | ±63 | 49,178 | ±631 | 768,419 | ***** |
| Not Hispanic or Latino: | 110,960 | ***** | 75,215 | ±23 | 39,359 | ±23 | 19,382 | ±721 | 34,668 | ±336 | 46,532 | ±755 | 724,527 | ***** |
| White alone | 96,756 | ±469 | 68,157 | ±77 | 38,173 | ±159 | 17,339 | ±879 | 30,022 | ±456 | 36,725 | ±1,091 | 511,897 | ±1,014 |
| Black or African American alone | 7,386 | ±673 | 3,987 | ±284 | 219 | ±114 | 1,260 | ±462 | 3,097 | ±306 | 5,716 | ±675 | 166,174 | ±1,530 |
| American Indian and Alaska Native alone | 47 | ±63 | 183 | ±76 | 47 | ±55 | 0 | ±23 | 160 | ±80 | 0 | ±26 | 842 | ±245 |
| Asian alone | 1,069 | ±164 | 869 | ±129 | 213 | ±53 | 255 | ±210 | 250 | ±135 | 765 | ±275 | 22,660 | ±614 |
| Native Hawaiian and Other Pacific Islander alone | 16 | ±26 | 0 | ±29 | 0 | ±26 | 0 | ±23 | 0 | ±26 | 15 | ±24 | 450 | ±74 |
| Some other race alone | 557 | ±473 | 12 | ±15 | 151 | ±146 | 8 | ±13 | 6 | ±11 | 310 | ±280 | 2,808 | ±904 |
| Two or more races: | 5,129 | ±734 | 2,007 | ±307 | 556 | ±156 | 520 | ±227 | 1,133 | ±266 | 3,001 | ±566 | 19,696 | ±1,714 |
| Two races including Some other race | 53 | ±49 | 89 | ±68 | 9 | ±14 | 3 | ±7 | 70 | ±61 | 82 | ±69 | 1,363 | ±666 |
| Two races excluding Some other race, and three or more races | 5,076 | ±727 | 1,918 | ±311 | 547 | ±156 | 517 | ±227 | 1,063 | ±256 | 2,919 | ±565 | 18,333 | ±1,540 |
| Hispanic or Latino: | 6,450 | ***** | 2,664 | ±2 | 805 | ±3 | 2,443 | ±524 | 2,062 | ±237 | 2,646 | ±543 | 43,892 | ***** |
| White alone | 5,407 | ±373 | 1,680 | ±212 | 517 | ±209 | 2,141 | ±484 | 1,200 | ±283 | 1,737 | ±494 | 27,824 | ±1,392 |
| Black or African American alone | 22 | ±27 | 34 | ±41 | 0 | ±26 | 0 | ±23 | 34 | ±41 | 24 | ±34 | 2,352 | ±516 |
| American Indian and Alaska Native alone | 97 | ±125 | 13 | ±18 | 0 | ±26 | 0 | ±23 | 6 | ±14 | 50 | ±60 | 228 | ±143 |
| Asian alone | 21 | ±27 | 0 | ±29 | 1 | ±3 | 15 | ±26 | 0 | ±26 | 8 | ±12 | 220 | ±141 |
| Native Hawaiian and Other Pacific Islander alone | 0 | ±29 | 11 | ±21 | 0 | ±26 | 0 | ±23 | 11 | ±21 | 0 | ±26 | 49 | ±48 |
| Some other race alone | 644 | ±269 | 278 | ±165 | 287 | ±209 | 287 | ±189 | 258 | ±157 | 466 | ±251 | 6,277 | ±1,391 |
| Two or more races: | 259 | ±208 | 648 | ±146 | 0 | ±26 | 0 | ±23 | 553 | ±147 | 361 | ±189 | 6,942 | ±619 |
| Two races including Some other race | 207 | ±224 | 511 | ±164 | 0 | ±26 | 0 | ±23 | 416 | ±133 | 284 | ±174 | 5,879 | ±549 |
| Two races excluding Some other race, and three or more races | 52 | ±72 | 137 | ±119 | 0 | ±26 | 0 | ±23 | 137 | ±119 | 77 | ±74 | 1,063 | ±348 |

Community of Comparison Data Table- B17021

| Label | Clark County, Indiana | | Floyd County, Indiana | | Harrison County, Indiana | | Town of Clarksville, Indiana | | City of New Albany, Indiana | | City of Jeffersonville, Indiana | | Louisville/Jefferson County metro government, Kentucky | |
|--|-----------------------|-----------------|-----------------------|-----------------|--------------------------|-----------------|------------------------------|-----------------|-----------------------------|-----------------|---------------------------------|-----------------|--|-----------------|
| | Estimate | Margin of Error | Estimate | Margin of Error | Estimate | Margin of Error | Estimate | Margin of Error | Estimate | Margin of Error | Estimate | Margin of Error | Estimate | Margin of Error |
| Total: | 115,475 | ±340 | 76,240 | ±340 | 39,664 | ±196 | 21,544 | ±442 | 35,481 | ±271 | 46,949 | ±614 | 751,526 | ±1,133 |
| Income in the past 12 months below poverty level: | 11,389 | ±1,276 | 7,199 | ±733 | 3,583 | ±711 | 2,732 | ±632 | 6,196 | ±708 | 5,034 | ±805 | 103,083 | ±3,822 |
| In family households: | 7,534 | ±1,103 | 5,054 | ±675 | 2,351 | ±644 | 1,532 | ±561 | 4,475 | ±671 | 3,573 | ±718 | 69,918 | ±3,722 |
| In married couple families: | 3,143 | ±898 | 1,902 | ±470 | 1,065 | ±423 | 922 | ±467 | 1,123 | ±466 | 1,127 | ±638 | 19,257 | ±2,147 |
| All relatives | 3,093 | ±902 | 1,184 | ±470 | 1,050 | ±423 | 922 | ±474 | 1,021 | ±467 | 1,127 | ±638 | 18,225 | ±2,132 |
| Non-relatives | 50 | ±52 | 118 | ±73 | 15 | ±21 | 20 | ±34 | 102 | ±71 | 0 | ±26 | 1,032 | ±352 |
| In other families: | 4,391 | ±823 | 3,752 | ±655 | 1,286 | ±519 | 610 | ±313 | 3,352 | ±627 | 2,446 | ±607 | 50,661 | ±3,155 |
| Male householder, no spouse present: | 763 | ±323 | 421 | ±181 | 355 | ±265 | 88 | ±78 | 315 | ±178 | 264 | ±167 | 7,257 | ±1,167 |
| All relatives | 398 | ±270 | 209 | ±143 | 218 | ±212 | 39 | ±48 | 143 | ±129 | 126 | ±116 | 5,157 | ±1,009 |
| Non-relatives | 365 | ±192 | 212 | ±106 | 137 | ±94 | 49 | ±48 | 172 | ±109 | 138 | ±119 | 2,100 | ±536 |
| Female householder, no spouse present: | 3,628 | ±738 | 3,331 | ±622 | 931 | ±419 | 522 | ±313 | 3,037 | ±610 | 2,182 | ±585 | 43,404 | ±3,063 |
| All relatives | 3,266 | ±720 | 3,125 | ±601 | 871 | ±389 | 487 | ±321 | 2,867 | ±590 | 1,928 | ±587 | 40,730 | ±2,967 |
| Non-relatives | 362 | ±163 | 206 | ±98 | 60 | ±57 | 35 | ±40 | 170 | ±94 | 254 | ±142 | 2,674 | ±422 |
| In non-family households and other living arrangement: | 3,855 | ±594 | 2,145 | ±271 | 1,232 | ±373 | 1,200 | ±359 | 1,721 | ±244 | 1,461 | ±375 | 33,165 | ±1,749 |
| Householder: | 2,463 | ±408 | 1,492 | ±233 | 662 | ±223 | 866 | ±299 | 1,230 | ±212 | 875 | ±202 | 22,876 | ±1,310 |
| Living alone | 2,137 | ±406 | 1,233 | ±216 | 484 | ±198 | 695 | ±275 | 984 | ±190 | 832 | ±197 | 19,412 | ±1,203 |
| Not living alone | 326 | ±138 | 259 | ±113 | 178 | ±121 | 171 | ±116 | 246 | ±114 | 43 | ±36 | 3,464 | ±430 |
| Other living arrangement | 1,392 | ±515 | 653 | ±155 | 570 | ±234 | 334 | ±184 | 491 | ±140 | 586 | ±338 | 10,289 | ±919 |
| Income in the past 12 months at or above poverty level: | 104,086 | ±1,248 | 69,041 | ±782 | 36,081 | ±704 | 18,812 | ±703 | 29,285 | ±720 | 41,915 | ±954 | 648,443 | ±4,041 |
| In family households: | 88,779 | ±1,522 | 59,144 | ±972 | 31,436 | ±924 | 14,770 | ±806 | 22,882 | ±913 | 35,143 | ±1,329 | 519,626 | ±4,924 |
| In married couple families: | 66,284 | ±1,978 | 45,984 | ±1,529 | 26,091 | ±1,226 | 9,950 | ±929 | 15,570 | ±1,026 | 25,266 | ±1,381 | 376,997 | ±6,132 |
| All relatives | 66,118 | ±1,994 | 45,769 | ±1,512 | 25,892 | ±1,232 | 9,892 | ±934 | 15,437 | ±1,006 | 25,211 | ±1,395 | 375,786 | ±6,160 |
| Non-relatives | 166 | ±105 | 215 | ±120 | 199 | ±120 | 58 | ±57 | 133 | ±101 | 55 | ±58 | 1,211 | ±252 |
| In other families: | 22,495 | ±1,937 | 13,160 | ±1,209 | 5,345 | ±871 | 4,820 | ±783 | 7,312 | ±832 | 9,877 | ±1,307 | 142,629 | ±5,141 |
| Male householder, no spouse present: | 7,909 | ±1,136 | 4,798 | ±872 | 2,553 | ±662 | 2,035 | ±520 | 2,581 | ±612 | 2,718 | ±594 | 41,465 | ±2,651 |
| All relatives | 7,232 | ±1,026 | 4,554 | ±840 | 2,376 | ±620 | 1,893 | ±488 | 2,414 | ±591 | 2,446 | ±543 | 38,122 | ±2,428 |
| Non-relatives | 677 | ±244 | 244 | ±92 | 177 | ±124 | 142 | ±139 | 167 | ±75 | 272 | ±121 | 3,343 | ±504 |
| Female householder, no spouse present: | 14,586 | ±1,666 | 8,362 | ±928 | 2,792 | ±614 | 2,785 | ±700 | 4,731 | ±788 | 7,159 | ±1,268 | 101,164 | ±4,736 |
| All relatives | 13,939 | ±1,634 | 7,853 | ±890 | 2,702 | ±601 | 2,625 | ±688 | 4,361 | ±715 | 6,788 | ±1,251 | 96,094 | ±4,481 |
| Non-relatives | 647 | ±186 | 509 | ±179 | 90 | ±58 | 160 | ±93 | 370 | ±177 | 371 | ±139 | 5,070 | ±613 |
| In non-family households and other living arrangement: | 15,307 | ±1,040 | 9,897 | ±524 | 4,645 | ±593 | 4,042 | ±486 | 6,403 | ±502 | 6,772 | ±795 | 128,817 | ±2,740 |
| Householder: | 13,059 | ±823 | 8,325 | ±412 | 4,010 | ±524 | 3,458 | ±444 | 5,377 | ±417 | 5,611 | ±582 | 106,810 | ±2,036 |
| Living alone | 10,885 | ±713 | 7,081 | ±407 | 3,427 | ±496 | 2,932 | ±423 | 4,607 | ±391 | 4,578 | ±470 | 88,325 | ±1,785 |
| Not living alone | 2,174 | ±436 | 1,244 | ±215 | 583 | ±167 | 526 | ±186 | 770 | ±166 | 1,033 | ±334 | 18,494 | ±1,154 |
| Other living arrangement | 2,248 | ±398 | 1,572 | ±294 | 635 | ±245 | 584 | ±200 | 1,026 | ±242 | 1,161 | ±338 | 21,998 | ±1,337 |

Community of Comparison Data Table- B16004

| | Clark County, Indiana | | Floyd County, Indiana | | Harrison County, Indiana | | City of Jeffersonville, Indiana | | City of New Albany, Indiana | | Louisville/Jefferson County metro government, Kentucky | |
|---|-----------------------|-----------------|-----------------------|-----------------|--------------------------|-----------------|---------------------------------|-----------------|-----------------------------|-----------------|--|-----------------|
| Label | Estimate | Margin of Error | Estimate | Margin of Error | Estimate | Margin of Error | Estimate | Margin of Error | Estimate | Margin of Error | Estimate | Margin of Error |
| Total: | 110,120 | ±67 | 73,360 | ±40 | 37,914 | ±85 | 44,879 | ±622 | 34,582 | ±265 | 720,310 | ±23 |
| 5 to 17 years: | 19,156 | ±61 | 13,075 | ±41 | 6,741 | ±117 | 7,655 | ±557 | 5,611 | ±359 | 121,956 | ±88 |
| Speak only English | 18,134 | ±280 | 12,667 | ±136 | 6,548 | ±181 | 7,212 | ±566 | 5,359 | ±374 | 107,579 | ±1,228 |
| Speak Spanish: | 877 | ±267 | 248 | ±92 | 53 | ±46 | 391 | ±223 | 195 | ±74 | 7,008 | ±622 |
| Speak English "very well" | 771 | ±260 | 224 | ±87 | 38 | ±37 | 314 | ±209 | 171 | ±69 | 4,493 | ±642 |
| Speak English "well" | 106 | ±74 | 0 | ±29 | 0 | ±26 | 77 | ±72 | 0 | ±26 | 1,975 | ±398 |
| Speak English "not well" | 0 | ±29 | 24 | ±26 | 15 | ±24 | 0 | ±26 | 24 | ±26 | 468 | ±215 |
| Speak English "not at all" | 0 | ±29 | 0 | ±29 | 0 | ±26 | 0 | ±26 | 0 | ±26 | 72 | ±84 |
| Speak other Indo-European languages: | 56 | ±63 | 95 | ±66 | 82 | ±109 | 0 | ±26 | 21 | ±26 | 2,104 | ±435 |
| Speak English "very well" | 37 | ±42 | 68 | ±61 | 82 | ±109 | 0 | ±26 | 21 | ±26 | 1,418 | ±324 |
| Speak English "well" | 0 | ±29 | 27 | ±30 | 0 | ±26 | 0 | ±26 | 0 | ±26 | 571 | ±285 |
| Speak English "not well" | 19 | ±31 | 0 | ±29 | 0 | ±26 | 0 | ±26 | 0 | ±26 | 115 | ±79 |
| Speak English "not at all" | 0 | ±29 | 0 | ±29 | 0 | ±26 | 0 | ±26 | 0 | ±26 | 0 | ±29 |
| Speak Asian and Pacific Island languages: | 52 | ±62 | 65 | ±54 | 48 | ±37 | 52 | ±62 | 36 | ±50 | 1,751 | ±365 |
| Speak English "very well" | 43 | ±53 | 54 | ±56 | 48 | ±37 | 43 | ±53 | 36 | ±50 | 1,200 | ±279 |
| Speak English "well" | 0 | ±29 | 7 | ±11 | 0 | ±26 | 0 | ±26 | 0 | ±26 | 340 | ±168 |
| Speak English "not well" | 9 | ±22 | 4 | ±8 | 0 | ±26 | 9 | ±22 | 0 | ±26 | 211 | ±104 |
| Speak English "not at all" | 0 | ±29 | 0 | ±29 | 0 | ±26 | 0 | ±26 | 0 | ±26 | 0 | ±29 |
| Speak other languages: | 37 | ±59 | 0 | ±29 | 10 | ±17 | 0 | ±26 | 0 | ±26 | 3,514 | ±787 |
| Speak English "very well" | 13 | ±21 | 0 | ±29 | 10 | ±17 | 0 | ±26 | 0 | ±26 | 2,486 | ±675 |
| Speak English "well" | 12 | ±19 | 0 | ±29 | 0 | ±26 | 0 | ±26 | 0 | ±26 | 887 | ±320 |
| Speak English "not well" | 0 | ±29 | 0 | ±29 | 0 | ±26 | 0 | ±26 | 0 | ±26 | 141 | ±107 |
| Speak English "not at all" | 12 | ±19 | 0 | ±29 | 0 | ±26 | 0 | ±26 | 0 | ±26 | 0 | ±29 |
| 18 to 64 years: | 72,656 | ±141 | 47,745 | ±81 | 24,081 | ±136 | 29,585 | ±729 | 22,988 | ±400 | 474,366 | ±77 |
| Speak only English | 67,881 | ±449 | 46,160 | ±286 | 23,463 | ±234 | 27,734 | ±864 | 22,074 | ±426 | 422,957 | ±1,970 |
| Speak Spanish: | 3,444 | ±262 | 799 | ±223 | 368 | ±160 | 1,121 | ±320 | 626 | ±214 | 22,528 | ±816 |
| Speak English "very well" | 1,741 | ±387 | 624 | ±201 | 254 | ±149 | 735 | ±228 | 509 | ±201 | 9,557 | ±829 |
| Speak English "well" | 753 | ±249 | 95 | ±70 | 98 | ±91 | 244 | ±149 | 37 | ±29 | 5,055 | ±638 |
| Speak English "not well" | 544 | ±225 | 80 | ±74 | 15 | ±21 | 131 | ±90 | 80 | ±74 | 5,834 | ±632 |
| Speak English "not at all" | 406 | ±162 | 0 | ±29 | 1 | ±3 | 11 | ±16 | 0 | ±26 | 2,082 | ±477 |
| Speak other Indo-European languages: | 754 | ±309 | 284 | ±137 | 137 | ±101 | 437 | ±285 | 129 | ±103 | 13,057 | ±1,417 |
| Speak English "very well" | 623 | ±266 | 244 | ±126 | 135 | ±101 | 352 | ±228 | 106 | ±98 | 7,494 | ±715 |
| Speak English "well" | 108 | ±95 | 22 | ±25 | 2 | ±3 | 62 | ±85 | 10 | ±16 | 3,549 | ±682 |
| Speak English "not well" | 23 | ±27 | 18 | ±22 | 0 | ±26 | 23 | ±27 | 13 | ±20 | 1,714 | ±515 |
| Speak English "not at all" | 0 | ±29 | 0 | ±29 | 0 | ±26 | 0 | ±26 | 0 | ±26 | 300 | ±180 |
| Speak Asian and Pacific Island languages: | 484 | ±222 | 453 | ±117 | 76 | ±66 | 238 | ±152 | 114 | ±77 | 8,730 | ±707 |
| Speak English "very well" | 348 | ±205 | 258 | ±100 | 76 | ±66 | 135 | ±113 | 57 | ±39 | 4,876 | ±618 |
| Speak English "well" | 134 | ±82 | 75 | ±52 | 0 | ±26 | 101 | ±79 | 55 | ±52 | 2,290 | ±448 |
| Speak English "not well" | 2 | ±7 | 87 | ±68 | 0 | ±26 | 2 | ±7 | 2 | ±4 | 1,252 | ±190 |
| Speak English "not at all" | 0 | ±29 | 33 | ±43 | 0 | ±26 | 0 | ±26 | 0 | ±26 | 312 | ±185 |
| Speak other languages: | 93 | ±104 | 49 | ±44 | 37 | ±34 | 55 | ±99 | 45 | ±43 | 7,094 | ±997 |
| Speak English "very well" | 14 | ±24 | 49 | ±44 | 37 | ±34 | 0 | ±26 | 45 | ±43 | 3,039 | ±551 |
| Speak English "well" | 61 | ±86 | 0 | ±29 | 0 | ±26 | 48 | ±87 | 0 | ±26 | 2,565 | ±595 |
| Speak English "not well" | 18 | ±19 | 0 | ±29 | 0 | ±26 | 7 | ±13 | 0 | ±26 | 1,259 | ±321 |
| Speak English "not at all" | 0 | ±29 | 0 | ±29 | 0 | ±26 | 0 | ±26 | 0 | ±26 | 231 | ±133 |
| 65 years and over: | 18,308 | ±126 | 12,540 | ±69 | 7,092 | ±72 | 7,639 | ±615 | 5,983 | ±391 | 123,988 | ±20 |
| Speak only English | 17,976 | ±125 | 12,338 | ±101 | 6,988 | ±79 | 7,420 | ±601 | 5,867 | ±386 | 118,495 | ±638 |
| Speak Spanish: | 115 | ±85 | 69 | ±47 | 64 | ±66 | 56 | ±54 | 54 | ±44 | 1,860 | ±233 |
| Speak English "very well" | 83 | ±77 | 49 | ±37 | 24 | ±36 | 31 | ±43 | 34 | ±33 | 682 | ±225 |
| Speak English "well" | 6 | ±10 | 20 | ±32 | 2 | ±4 | 0 | ±26 | 20 | ±32 | 360 | ±134 |
| Speak English "not well" | 0 | ±29 | 0 | ±29 | 0 | ±26 | 0 | ±26 | 0 | ±26 | 430 | ±140 |
| Speak English "not at all" | 26 | ±31 | 0 | ±29 | 38 | ±52 | 25 | ±31 | 0 | ±26 | 388 | ±162 |
| Speak other Indo-European languages: | 116 | ±92 | 54 | ±43 | 40 | ±37 | 110 | ±90 | 13 | ±21 | 2,075 | ±606 |
| Speak English "very well" | 95 | ±80 | 41 | ±39 | 32 | ±35 | 95 | ±80 | 0 | ±26 | 1,410 | ±582 |
| Speak English "well" | 15 | ±21 | 13 | ±21 | 0 | ±26 | 15 | ±21 | 13 | ±21 | 270 | ±117 |
| Speak English "not well" | 6 | ±9 | 0 | ±29 | 8 | ±13 | 0 | ±26 | 0 | ±26 | 239 | ±113 |
| Speak English "not at all" | 0 | ±29 | 0 | ±29 | 0 | ±26 | 0 | ±26 | 0 | ±26 | 156 | ±112 |
| Speak Asian and Pacific Island languages: | 88 | ±53 | 64 | ±50 | 0 | ±26 | 53 | ±42 | 49 | ±44 | 1,176 | ±146 |

Community of Comparison Data Table- B16004

| Label | Clark County, Indiana | | Floyd County, Indiana | | Harrison County, Indiana | | City of Jeffersonville, Indiana | | City of New Albany, Indiana | | Louisville/Jefferson County metro government, Kentucky | |
|----------------------------|-----------------------|-----------------|-----------------------|-----------------|--------------------------|-----------------|---------------------------------|-----------------|-----------------------------|-----------------|--|-----------------|
| | Estimate | Margin of Error | Estimate | Margin of Error | Estimate | Margin of Error | Estimate | Margin of Error | Estimate | Margin of Error | Estimate | Margin of Error |
| Speak English "very well" | 9 | ±11 | 39 | ±35 | 0 | ±26 | 7 | ±11 | 24 | ±26 | 317 | ±117 |
| Speak English "well" | 73 | ±49 | 12 | ±19 | 0 | ±26 | 46 | ±40 | 12 | ±19 | 229 | ±86 |
| Speak English "not well" | 6 | ±11 | 13 | ±19 | 0 | ±26 | 0 | ±26 | 13 | ±19 | 311 | ±77 |
| Speak English "not at all" | 0 | ±29 | 0 | ±29 | 0 | ±26 | 0 | ±26 | 0 | ±26 | 319 | ±127 |
| Speak other languages: | 13 | ±23 | 15 | ±22 | 0 | ±26 | 0 | ±26 | 0 | ±26 | 382 | ±221 |
| Speak English "very well" | 13 | ±23 | 15 | ±22 | 0 | ±26 | 0 | ±26 | 0 | ±26 | 228 | ±191 |
| Speak English "well" | 0 | ±29 | 0 | ±29 | 0 | ±26 | 0 | ±26 | 0 | ±26 | 49 | ±54 |
| Speak English "not well" | 0 | ±29 | 0 | ±29 | 0 | ±26 | 0 | ±26 | 0 | ±26 | 33 | ±53 |
| Speak English "not at all" | 0 | ±29 | 0 | ±29 | 0 | ±26 | 0 | ±26 | 0 | ±26 | 72 | ±75 |

| GeoID | Block Group | Census Tract | County | State | Total Population | Not Hispanic or Latino | White alone |
|--------------|---------------|---------------------|-----------------|---------|------------------|------------------------|-------------|
| 180430710051 | Block Group 1 | Census Tract 710.05 | Floyd County | Indiana | 2364 | 2364 | 2307 |
| 180430706002 | Block Group 2 | Census Tract 706 | Floyd County | Indiana | 1612 | 1605 | 1580 |
| 180430711032 | Block Group 2 | Census Tract 711.03 | Floyd County | Indiana | 2076 | 2076 | 2005 |
| 180430712001 | Block Group 1 | Census Tract 712 | Floyd County | Indiana | 378 | 378 | 378 |
| 180430711014 | Block Group 4 | Census Tract 711.01 | Floyd County | Indiana | 699 | 686 | 600 |
| 180190505042 | Block Group 2 | Census Tract 505.04 | Clark County | Indiana | 754 | 506 | 353 |
| 180190504032 | Block Group 2 | Census Tract 504.03 | Clark County | Indiana | 0 | 0 | 0 |
| 180190504031 | Block Group 1 | Census Tract 504.03 | Clark County | Indiana | 1172 | 993 | 860 |
| 180430708022 | Block Group 2 | Census Tract 708.02 | Floyd County | Indiana | 1418 | 1390 | 1003 |
| 180430710033 | Block Group 3 | Census Tract 710.03 | Floyd County | Indiana | 3108 | 3080 | 2945 |
| 180430712002 | Block Group 2 | Census Tract 712 | Floyd County | Indiana | 1566 | 1566 | 1469 |
| 180430706001 | Block Group 1 | Census Tract 706 | Floyd County | Indiana | 945 | 936 | 906 |
| 180430703011 | Block Group 1 | Census Tract 703.01 | Floyd County | Indiana | 1880 | 1880 | 1848 |
| 180430710041 | Block Group 1 | Census Tract 710.04 | Floyd County | Indiana | 2837 | 2789 | 2689 |
| 180430704001 | Block Group 1 | Census Tract 704 | Floyd County | Indiana | 545 | 526 | 506 |
| 180430711012 | Block Group 2 | Census Tract 711.01 | Floyd County | Indiana | 881 | 881 | 881 |
| 180190505043 | Block Group 3 | Census Tract 505.04 | Clark County | Indiana | 740 | 740 | 671 |
| 180190505033 | Block Group 3 | Census Tract 505.03 | Clark County | Indiana | 1346 | 1208 | 1076 |
| 180190504012 | Block Group 2 | Census Tract 504.01 | Clark County | Indiana | 410 | 410 | 410 |
| 180190502002 | Block Group 2 | Census Tract 502 | Clark County | Indiana | 483 | 483 | 401 |
| 180430702001 | Block Group 1 | Census Tract 702 | Floyd County | Indiana | 1414 | 1219 | 1036 |
| 180430702002 | Block Group 2 | Census Tract 702 | Floyd County | Indiana | 512 | 466 | 285 |
| 180430703012 | Block Group 2 | Census Tract 703.01 | Floyd County | Indiana | 1241 | 1230 | 1194 |
| 180430703021 | Block Group 1 | Census Tract 703.02 | Floyd County | Indiana | 986 | 942 | 839 |
| 180430703022 | Block Group 2 | Census Tract 703.02 | Floyd County | Indiana | 1079 | 971 | 872 |
| 180430703024 | Block Group 4 | Census Tract 703.02 | Floyd County | Indiana | 607 | 523 | 509 |
| 180430710053 | Block Group 3 | Census Tract 710.05 | Floyd County | Indiana | 1317 | 1281 | 1222 |
| 180430711031 | Block Group 1 | Census Tract 711.03 | Floyd County | Indiana | 2673 | 2629 | 2568 |
| 180430710071 | Block Group 1 | Census Tract 710.07 | Floyd County | Indiana | 1751 | 1749 | 1621 |
| 180430703023 | Block Group 3 | Census Tract 703.02 | Floyd County | Indiana | 570 | 570 | 569 |
| 180190502001 | Block Group 1 | Census Tract 502 | Clark County | Indiana | 1065 | 901 | 343 |
| 180190504011 | Block Group 1 | Census Tract 504.01 | Clark County | Indiana | 582 | 554 | 519 |
| 180190504041 | Block Group 1 | Census Tract 504.04 | Clark County | Indiana | 1058 | 758 | 652 |
| 180430709021 | Block Group 1 | Census Tract 709.02 | Floyd County | Indiana | 764 | 657 | 568 |
| 180430709022 | Block Group 2 | Census Tract 709.02 | Floyd County | Indiana | 897 | 883 | 794 |
| 180430710034 | Block Group 4 | Census Tract 710.03 | Floyd County | Indiana | 2163 | 2116 | 2116 |
| 180430711013 | Block Group 3 | Census Tract 711.01 | Floyd County | Indiana | 2785 | 2775 | 2680 |
| 180430708012 | Block Group 2 | Census Tract 708.01 | Floyd County | Indiana | 1356 | 1244 | 1077 |
| 180190505031 | Block Group 1 | Census Tract 505.03 | Clark County | Indiana | 1341 | 972 | 697 |
| 180190505032 | Block Group 2 | Census Tract 505.03 | Clark County | Indiana | 1404 | 1404 | 1143 |
| 180190505041 | Block Group 1 | Census Tract 505.04 | Clark County | Indiana | 782 | 755 | 744 |
| 180430707001 | Block Group 1 | Census Tract 707 | Floyd County | Indiana | 2409 | 2166 | 1649 |
| 180430705003 | Block Group 3 | Census Tract 705 | Floyd County | Indiana | 653 | 653 | 644 |
| 180430708011 | Block Group 1 | Census Tract 708.01 | Floyd County | Indiana | 1868 | 1614 | 1052 |
| 180430708023 | Block Group 3 | Census Tract 708.02 | Floyd County | Indiana | 2495 | 2273 | 2042 |
| 180430709011 | Block Group 1 | Census Tract 709.01 | Floyd County | Indiana | 1413 | 1287 | 1194 |
| 180430709013 | Block Group 3 | Census Tract 709.01 | Floyd County | Indiana | 1331 | 1200 | 981 |
| 180430709014 | Block Group 4 | Census Tract 709.01 | Floyd County | Indiana | 897 | 897 | 817 |
| 180430711041 | Block Group 1 | Census Tract 711.04 | Floyd County | Indiana | 1838 | 1777 | 1703 |
| 180430704004 | Block Group 4 | Census Tract 704 | Floyd County | Indiana | 960 | 957 | 949 |
| 180430711042 | Block Group 2 | Census Tract 711.04 | Floyd County | Indiana | 1424 | 1424 | 1397 |
| 180430710072 | Block Group 2 | Census Tract 710.07 | Floyd County | Indiana | 1580 | 1574 | 1443 |
| 180430710063 | Block Group 3 | Census Tract 710.06 | Floyd County | Indiana | 1710 | 1665 | 1368 |
| 180430710073 | Block Group 3 | Census Tract 710.07 | Floyd County | Indiana | 1464 | 1391 | 1177 |
| 180430710062 | Block Group 2 | Census Tract 710.06 | Floyd County | Indiana | 1150 | 1132 | 843 |
| 180430705002 | Block Group 2 | Census Tract 705 | Floyd County | Indiana | 1193 | 1144 | 845 |
| 180430704003 | Block Group 3 | Census Tract 704 | Floyd County | Indiana | 904 | 904 | 891 |
| 180430704002 | Block Group 2 | Census Tract 704 | Floyd County | Indiana | 371 | 353 | 322 |
| 180430709012 | Block Group 2 | Census Tract 709.01 | Floyd County | Indiana | 1488 | 1328 | 1057 |
| 180430705001 | Block Group 1 | Census Tract 705 | Floyd County | Indiana | 804 | 804 | 672 |
| 180430711011 | Block Group 1 | Census Tract 711.01 | Floyd County | Indiana | 1337 | 1337 | 1337 |
| 180610605002 | Block Group 2 | Census Tract 605 | Harrison County | Indiana | 1715 | 1714 | 1622 |
| 180610605001 | Block Group 1 | Census Tract 605 | Harrison County | Indiana | 2433 | 2358 | 2341 |
| 180190507031 | Block Group 1 | Census Tract 507.03 | Clark County | Indiana | 2498 | 2189 | 2145 |
| 180190507032 | Block Group 2 | Census Tract 507.03 | Clark County | Indiana | 1864 | 1822 | 1665 |
| 180190504014 | Block Group 4 | Census Tract 504.01 | Clark County | Indiana | 1689 | 1565 | 1476 |
| 180190505051 | Block Group 1 | Census Tract 505.05 | Clark County | Indiana | 1079 | 1073 | 952 |
| 180190505044 | Block Group 4 | Census Tract 505.04 | Clark County | Indiana | 945 | 839 | 831 |
| 180190504013 | Block Group 3 | Census Tract 504.01 | Clark County | Indiana | 25 | 25 | 4 |
| 180190505052 | Block Group 2 | Census Tract 505.05 | Clark County | Indiana | 891 | 799 | 689 |
| 180190505034 | Block Group 4 | Census Tract 505.03 | Clark County | Indiana | 1124 | 1089 | 1059 |
| 180430710052 | Block Group 2 | Census Tract 710.05 | Floyd County | Indiana | 1998 | 1992 | 1721 |
| 180430710031 | Block Group 1 | Census Tract 710.03 | Floyd County | Indiana | 984 | 984 | 984 |
| 180430708021 | Block Group 1 | Census Tract 708.02 | Floyd County | Indiana | 793 | 793 | 615 |
| 180430710032 | Block Group 2 | Census Tract 710.03 | Floyd County | Indiana | 884 | 882 | 862 |
| 180430711043 | Block Group 3 | Census Tract 711.04 | Floyd County | Indiana | 1071 | 1071 | 1041 |
| 180430710061 | Block Group 1 | Census Tract 710.06 | Floyd County | Indiana | 2176 | 1955 | 1340 |
| 180190504044 | Block Group 4 | Census Tract 504.04 | Clark County | Indiana | 1048 | 988 | 953 |
| 180190504043 | Block Group 3 | Census Tract 504.04 | Clark County | Indiana | 1020 | 949 | 862 |
| 180190504033 | Block Group 3 | Census Tract 504.03 | Clark County | Indiana | 1246 | 1237 | 1012 |
| 180190504042 | Block Group 2 | Census Tract 504.04 | Clark County | Indiana | 1285 | 678 | 643 |

| GeoID | Block Group | Census Tract | County | State | Total Population | Not Hispanic or Latino | White alone |
|--------------|---------------|--------------------|------------------|----------|------------------|------------------------|-------------|
| 211110027001 | Block Group 1 | Census Tract 27 | Jefferson County | Kentucky | 765 | 765 | 250 |
| 211110011001 | Block Group 1 | Census Tract 11 | Jefferson County | Kentucky | 385 | 385 | 0 |
| 211110023003 | Block Group 3 | Census Tract 23 | Jefferson County | Kentucky | 536 | 532 | 307 |
| 211110030001 | Block Group 1 | Census Tract 30 | Jefferson County | Kentucky | 1514 | 1508 | 169 |
| 211110049001 | Block Group 1 | Census Tract 49 | Jefferson County | Kentucky | 1106 | 1077 | 643 |
| 211110021003 | Block Group 3 | Census Tract 21 | Jefferson County | Kentucky | 772 | 707 | 419 |
| 211110009001 | Block Group 1 | Census Tract 9 | Jefferson County | Kentucky | 997 | 994 | 3 |
| 211110007001 | Block Group 1 | Census Tract 7 | Jefferson County | Kentucky | 519 | 519 | 35 |
| 211110004005 | Block Group 5 | Census Tract 4 | Jefferson County | Kentucky | 879 | 879 | 145 |
| 211110004004 | Block Group 4 | Census Tract 4 | Jefferson County | Kentucky | 919 | 919 | 47 |
| 211110011003 | Block Group 3 | Census Tract 11 | Jefferson County | Kentucky | 894 | 894 | 0 |
| 211110004001 | Block Group 1 | Census Tract 4 | Jefferson County | Kentucky | 641 | 631 | 419 |
| 211110003002 | Block Group 2 | Census Tract 3 | Jefferson County | Kentucky | 683 | 683 | 189 |
| 211110007002 | Block Group 2 | Census Tract 7 | Jefferson County | Kentucky | 1337 | 1337 | 10 |
| 211110008001 | Block Group 1 | Census Tract 8 | Jefferson County | Kentucky | 1098 | 1094 | 21 |
| 211110018001 | Block Group 1 | Census Tract 18 | Jefferson County | Kentucky | 1207 | 1207 | 17 |
| 211110030002 | Block Group 2 | Census Tract 30 | Jefferson County | Kentucky | 872 | 867 | 107 |
| 211110021001 | Block Group 1 | Census Tract 21 | Jefferson County | Kentucky | 933 | 933 | 592 |
| 211110003003 | Block Group 3 | Census Tract 3 | Jefferson County | Kentucky | 578 | 578 | 47 |
| 211110023002 | Block Group 2 | Census Tract 23 | Jefferson County | Kentucky | 712 | 638 | 351 |
| 211110023001 | Block Group 1 | Census Tract 23 | Jefferson County | Kentucky | 655 | 655 | 290 |
| 211110010001 | Block Group 1 | Census Tract 10 | Jefferson County | Kentucky | 1058 | 1058 | 33 |
| 211110003001 | Block Group 1 | Census Tract 3 | Jefferson County | Kentucky | 962 | 919 | 753 |
| 211110004002 | Block Group 2 | Census Tract 4 | Jefferson County | Kentucky | 534 | 531 | 122 |
| 211110006001 | Block Group 1 | Census Tract 6 | Jefferson County | Kentucky | 893 | 866 | 96 |
| 211110006002 | Block Group 2 | Census Tract 6 | Jefferson County | Kentucky | 706 | 706 | 26 |
| 211110007003 | Block Group 3 | Census Tract 7 | Jefferson County | Kentucky | 921 | 921 | 161 |
| 211110008002 | Block Group 2 | Census Tract 8 | Jefferson County | Kentucky | 0 | 0 | 0 |
| 211110009002 | Block Group 2 | Census Tract 9 | Jefferson County | Kentucky | 1047 | 1003 | 49 |
| 211110049002 | Block Group 2 | Census Tract 49 | Jefferson County | Kentucky | 467 | 467 | 137 |
| 211110024011 | Block Group 1 | Census Tract 24.01 | Jefferson County | Kentucky | 1001 | 987 | 136 |
| 211110002011 | Block Group 1 | Census Tract 2.01 | Jefferson County | Kentucky | 868 | 862 | 693 |
| 211110011002 | Block Group 2 | Census Tract 11 | Jefferson County | Kentucky | 1902 | 1823 | 56 |
| 211110049003 | Block Group 3 | Census Tract 49 | Jefferson County | Kentucky | 3271 | 3223 | 1833 |
| 211110002012 | Block Group 2 | Census Tract 2.01 | Jefferson County | Kentucky | 526 | 526 | 459 |
| 211110024022 | Block Group 2 | Census Tract 24.02 | Jefferson County | Kentucky | 1669 | 1669 | 96 |
| 211110024021 | Block Group 1 | Census Tract 24.02 | Jefferson County | Kentucky | 1087 | 1087 | 647 |
| 211110002021 | Block Group 1 | Census Tract 2.02 | Jefferson County | Kentucky | 974 | 936 | 784 |
| 211110024012 | Block Group 2 | Census Tract 24.01 | Jefferson County | Kentucky | 1154 | 1120 | 13 |
| 211110021002 | Block Group 2 | Census Tract 21 | Jefferson County | Kentucky | 932 | 894 | 746 |
| 211110008003 | Block Group 3 | Census Tract 8 | Jefferson County | Kentucky | 720 | 720 | 11 |
| 211110004003 | Block Group 3 | Census Tract 4 | Jefferson County | Kentucky | 1192 | 1192 | 51 |

| GeoID | Block Group | Census Tract | County | State | Total Population for whom Poverty Status is Determined | Income in the past 12 months below poverty level |
|--------------|---------------|---------------------|----------|---------|--|--|
| 180430710051 | Block Group 1 | Census Tract 710.05 | Floyd | Indiana | 2210 | 6 |
| 180430706002 | Block Group 2 | Census Tract 706 | Floyd | Indiana | 1612 | 54 |
| 180430711032 | Block Group 2 | Census Tract 711.03 | Floyd | Indiana | 2076 | 25 |
| 180430712001 | Block Group 1 | Census Tract 712 | Floyd | Indiana | 378 | 25 |
| 180430711014 | Block Group 4 | Census Tract 711.01 | Floyd | Indiana | 699 | 61 |
| 180190505042 | Block Group 2 | Census Tract 505.04 | Clark | Indiana | 754 | 277 |
| 180190504032 | Block Group 2 | Census Tract 504.03 | Clark | Indiana | 0 | 0 |
| 180190504031 | Block Group 1 | Census Tract 504.03 | Clark | Indiana | 1172 | 193 |
| 180430708022 | Block Group 2 | Census Tract 708.02 | Floyd | Indiana | 1317 | 293 |
| 180430710033 | Block Group 3 | Census Tract 710.03 | Floyd | Indiana | 3108 | 56 |
| 180430712002 | Block Group 2 | Census Tract 712 | Floyd | Indiana | 1566 | 14 |
| 180430706001 | Block Group 1 | Census Tract 706 | Floyd | Indiana | 945 | 35 |
| 180430703011 | Block Group 1 | Census Tract 703.01 | Floyd | Indiana | 1880 | 72 |
| 180430710041 | Block Group 1 | Census Tract 710.04 | Floyd | Indiana | 2837 | 59 |
| 180430704001 | Block Group 1 | Census Tract 704 | Floyd | Indiana | 545 | 208 |
| 180430711012 | Block Group 2 | Census Tract 711.01 | Floyd | Indiana | 881 | 50 |
| 180190505043 | Block Group 3 | Census Tract 505.04 | Clark | Indiana | 619 | 137 |
| 180190505033 | Block Group 3 | Census Tract 505.03 | Clark | Indiana | 1346 | 328 |
| 180190504012 | Block Group 2 | Census Tract 504.01 | Clark | Indiana | 410 | 5 |
| 180190502002 | Block Group 2 | Census Tract 502 | Clark | Indiana | 347 | 213 |
| 180430702001 | Block Group 1 | Census Tract 702 | Floyd | Indiana | 1414 | 115 |
| 180430702002 | Block Group 2 | Census Tract 702 | Floyd | Indiana | 512 | 236 |
| 180430703012 | Block Group 2 | Census Tract 703.01 | Floyd | Indiana | 1241 | 70 |
| 180430703021 | Block Group 1 | Census Tract 703.02 | Floyd | Indiana | 986 | 74 |
| 180430703022 | Block Group 2 | Census Tract 703.02 | Floyd | Indiana | 1079 | 199 |
| 180430703024 | Block Group 4 | Census Tract 703.02 | Floyd | Indiana | 607 | 243 |
| 180430710053 | Block Group 3 | Census Tract 710.05 | Floyd | Indiana | 1292 | 51 |
| 180430711031 | Block Group 1 | Census Tract 711.03 | Floyd | Indiana | 2673 | 30 |
| 180430710071 | Block Group 1 | Census Tract 710.07 | Floyd | Indiana | 1751 | 58 |
| 180430703023 | Block Group 3 | Census Tract 703.02 | Floyd | Indiana | 570 | 10 |
| 180190502001 | Block Group 1 | Census Tract 502 | Clark | Indiana | 1065 | 501 |
| 180190504011 | Block Group 1 | Census Tract 504.01 | Clark | Indiana | 582 | 113 |
| 180190504041 | Block Group 1 | Census Tract 504.04 | Clark | Indiana | 1058 | 6 |
| 180430709021 | Block Group 1 | Census Tract 709.02 | Floyd | Indiana | 734 | 325 |
| 180430709022 | Block Group 2 | Census Tract 709.02 | Floyd | Indiana | 897 | 572 |
| 180430710034 | Block Group 4 | Census Tract 710.03 | Floyd | Indiana | 2163 | 0 |
| 180430711013 | Block Group 3 | Census Tract 711.01 | Floyd | Indiana | 2775 | 12 |
| 180430708012 | Block Group 2 | Census Tract 708.01 | Floyd | Indiana | 1356 | 392 |
| 180190505031 | Block Group 1 | Census Tract 505.03 | Clark | Indiana | 1341 | 219 |
| 180190505032 | Block Group 2 | Census Tract 505.03 | Clark | Indiana | 1404 | 121 |
| 180190505041 | Block Group 1 | Census Tract 505.04 | Clark | Indiana | 782 | 152 |
| 180430707001 | Block Group 1 | Census Tract 707 | Floyd | Indiana | 2409 | 500 |
| 180430705003 | Block Group 3 | Census Tract 705 | Floyd | Indiana | 643 | 89 |
| 180430708011 | Block Group 1 | Census Tract 708.01 | Floyd | Indiana | 1719 | 938 |
| 180430708023 | Block Group 3 | Census Tract 708.02 | Floyd | Indiana | 2352 | 383 |
| 180430709011 | Block Group 1 | Census Tract 709.01 | Floyd | Indiana | 1391 | 33 |
| 180430709013 | Block Group 3 | Census Tract 709.01 | Floyd | Indiana | 1331 | 118 |
| 180430709014 | Block Group 4 | Census Tract 709.01 | Floyd | Indiana | 897 | 6 |
| 180430711041 | Block Group 1 | Census Tract 711.04 | Floyd | Indiana | 1838 | 41 |
| 180430704004 | Block Group 4 | Census Tract 704 | Floyd | Indiana | 960 | 148 |
| 180430711042 | Block Group 2 | Census Tract 711.04 | Floyd | Indiana | 1406 | 44 |
| 180430710072 | Block Group 2 | Census Tract 710.07 | Floyd | Indiana | 1339 | 24 |
| 180430710063 | Block Group 3 | Census Tract 710.06 | Floyd | Indiana | 1594 | 419 |
| 180430710073 | Block Group 3 | Census Tract 710.07 | Floyd | Indiana | 1464 | 84 |
| 180430710062 | Block Group 2 | Census Tract 710.06 | Floyd | Indiana | 1150 | 57 |
| 180430705002 | Block Group 2 | Census Tract 705 | Floyd | Indiana | 761 | 83 |
| 180430704003 | Block Group 3 | Census Tract 704 | Floyd | Indiana | 837 | 131 |
| 180430704002 | Block Group 2 | Census Tract 704 | Floyd | Indiana | 371 | 106 |
| 180430709012 | Block Group 2 | Census Tract 709.01 | Floyd | Indiana | 1459 | 245 |
| 180430705001 | Block Group 1 | Census Tract 705 | Floyd | Indiana | 804 | 47 |
| 180430711011 | Block Group 1 | Census Tract 711.01 | Floyd | Indiana | 1337 | 0 |
| 180610605002 | Block Group 2 | Census Tract 605 | Harrison | Indiana | 1715 | 22 |
| 180610605001 | Block Group 1 | Census Tract 605 | Harrison | Indiana | 2433 | 20 |
| 180190507031 | Block Group 1 | Census Tract 507.03 | Clark | Indiana | 2391 | 278 |
| 180190507032 | Block Group 2 | Census Tract 507.03 | Clark | Indiana | 1864 | 83 |
| 180190504014 | Block Group 4 | Census Tract 504.01 | Clark | Indiana | 1689 | 158 |
| 180190505051 | Block Group 1 | Census Tract 505.05 | Clark | Indiana | 1079 | 58 |
| 180190505044 | Block Group 4 | Census Tract 505.04 | Clark | Indiana | 862 | 381 |
| 180190504013 | Block Group 3 | Census Tract 504.01 | Clark | Indiana | 25 | 0 |
| 180190505052 | Block Group 2 | Census Tract 505.05 | Clark | Indiana | 891 | 134 |
| 180190505034 | Block Group 4 | Census Tract 505.03 | Clark | Indiana | 1124 | 87 |
| 180430710052 | Block Group 2 | Census Tract 710.05 | Floyd | Indiana | 1998 | 156 |
| 180430710031 | Block Group 1 | Census Tract 710.03 | Floyd | Indiana | 939 | 29 |
| 180430708021 | Block Group 1 | Census Tract 708.02 | Floyd | Indiana | 793 | 28 |
| 180430710032 | Block Group 2 | Census Tract 710.03 | Floyd | Indiana | 884 | 13 |
| 180430711043 | Block Group 3 | Census Tract 711.04 | Floyd | Indiana | 1071 | 31 |
| 180430710061 | Block Group 1 | Census Tract 710.06 | Floyd | Indiana | 2165 | 73 |
| 180190504044 | Block Group 4 | Census Tract 504.04 | Clark | Indiana | 1048 | 105 |
| 180190504043 | Block Group 3 | Census Tract 504.04 | Clark | Indiana | 1020 | 55 |
| 180190504033 | Block Group 3 | Census Tract 504.03 | Clark | Indiana | 1169 | 235 |
| 180190504042 | Block Group 2 | Census Tract 504.04 | Clark | Indiana | 1285 | 35 |

AC Data Table- B17021, Kentucky Block Groups

| GeoID | Block Group | Census Tract | County | State | Total Population for whom Poverty Status is Determined | Income in the past 12 months below poverty level |
|--------------|---------------|--------------------|------------------|----------|--|--|
| 211110027001 | Block Group 1 | Census Tract 27 | Jefferson County | Kentucky | 690 | 427 |
| 211110011001 | Block Group 1 | Census Tract 11 | Jefferson County | Kentucky | 385 | 159 |
| 211110023003 | Block Group 3 | Census Tract 23 | Jefferson County | Kentucky | 535 | 140 |
| 211110030001 | Block Group 1 | Census Tract 30 | Jefferson County | Kentucky | 1419 | 1205 |
| 211110049001 | Block Group 1 | Census Tract 49 | Jefferson County | Kentucky | 1106 | 285 |
| 211110021003 | Block Group 3 | Census Tract 21 | Jefferson County | Kentucky | 772 | 386 |
| 211110009001 | Block Group 1 | Census Tract 9 | Jefferson County | Kentucky | 997 | 462 |
| 211110007001 | Block Group 1 | Census Tract 7 | Jefferson County | Kentucky | 519 | 343 |
| 211110004005 | Block Group 5 | Census Tract 4 | Jefferson County | Kentucky | 855 | 298 |
| 211110004004 | Block Group 4 | Census Tract 4 | Jefferson County | Kentucky | 919 | 237 |
| 211110011003 | Block Group 3 | Census Tract 11 | Jefferson County | Kentucky | 894 | 84 |
| 211110004001 | Block Group 1 | Census Tract 4 | Jefferson County | Kentucky | 641 | 214 |
| 211110003002 | Block Group 2 | Census Tract 3 | Jefferson County | Kentucky | 683 | 228 |
| 211110007002 | Block Group 2 | Census Tract 7 | Jefferson County | Kentucky | 1337 | 259 |
| 211110008001 | Block Group 1 | Census Tract 8 | Jefferson County | Kentucky | 1098 | 241 |
| 211110018001 | Block Group 1 | Census Tract 18 | Jefferson County | Kentucky | 1207 | 829 |
| 211110030002 | Block Group 2 | Census Tract 30 | Jefferson County | Kentucky | 778 | 353 |
| 211110021001 | Block Group 1 | Census Tract 21 | Jefferson County | Kentucky | 919 | 336 |
| 211110003003 | Block Group 3 | Census Tract 3 | Jefferson County | Kentucky | 564 | 111 |
| 211110023002 | Block Group 2 | Census Tract 23 | Jefferson County | Kentucky | 712 | 429 |
| 211110023001 | Block Group 1 | Census Tract 23 | Jefferson County | Kentucky | 629 | 209 |
| 211110010001 | Block Group 1 | Census Tract 10 | Jefferson County | Kentucky | 1058 | 224 |
| 211110003001 | Block Group 1 | Census Tract 3 | Jefferson County | Kentucky | 951 | 436 |
| 211110004002 | Block Group 2 | Census Tract 4 | Jefferson County | Kentucky | 534 | 8 |
| 211110006001 | Block Group 1 | Census Tract 6 | Jefferson County | Kentucky | 868 | 284 |
| 211110006002 | Block Group 2 | Census Tract 6 | Jefferson County | Kentucky | 706 | 206 |
| 211110007003 | Block Group 3 | Census Tract 7 | Jefferson County | Kentucky | 921 | 530 |
| 211110008002 | Block Group 2 | Census Tract 8 | Jefferson County | Kentucky | 0 | 0 |
| 211110009002 | Block Group 2 | Census Tract 9 | Jefferson County | Kentucky | 1039 | 543 |
| 211110049002 | Block Group 2 | Census Tract 49 | Jefferson County | Kentucky | 462 | 258 |
| 211110024011 | Block Group 1 | Census Tract 24.01 | Jefferson County | Kentucky | 1001 | 533 |
| 211110002011 | Block Group 1 | Census Tract 2.01 | Jefferson County | Kentucky | 868 | 425 |
| 211110011002 | Block Group 2 | Census Tract 11 | Jefferson County | Kentucky | 1902 | 986 |
| 211110049003 | Block Group 3 | Census Tract 49 | Jefferson County | Kentucky | 862 | 196 |
| 211110002012 | Block Group 2 | Census Tract 2.01 | Jefferson County | Kentucky | 526 | 331 |
| 211110024022 | Block Group 2 | Census Tract 24.02 | Jefferson County | Kentucky | 1669 | 623 |
| 211110024021 | Block Group 1 | Census Tract 24.02 | Jefferson County | Kentucky | 1087 | 180 |
| 211110002021 | Block Group 1 | Census Tract 2.02 | Jefferson County | Kentucky | 773 | 223 |
| 211110024012 | Block Group 2 | Census Tract 24.01 | Jefferson County | Kentucky | 1154 | 425 |
| 211110021002 | Block Group 2 | Census Tract 21 | Jefferson County | Kentucky | 932 | 424 |
| 211110008003 | Block Group 3 | Census Tract 8 | Jefferson County | Kentucky | 720 | 194 |
| 211110004003 | Block Group 3 | Census Tract 4 | Jefferson County | Kentucky | 1192 | 162 |