

# APPENDIX Bb: Photos from HPR Addendum

Some of the photos have been removed from Appendix Bb to avoid duplication of photos from Appendix Ba.

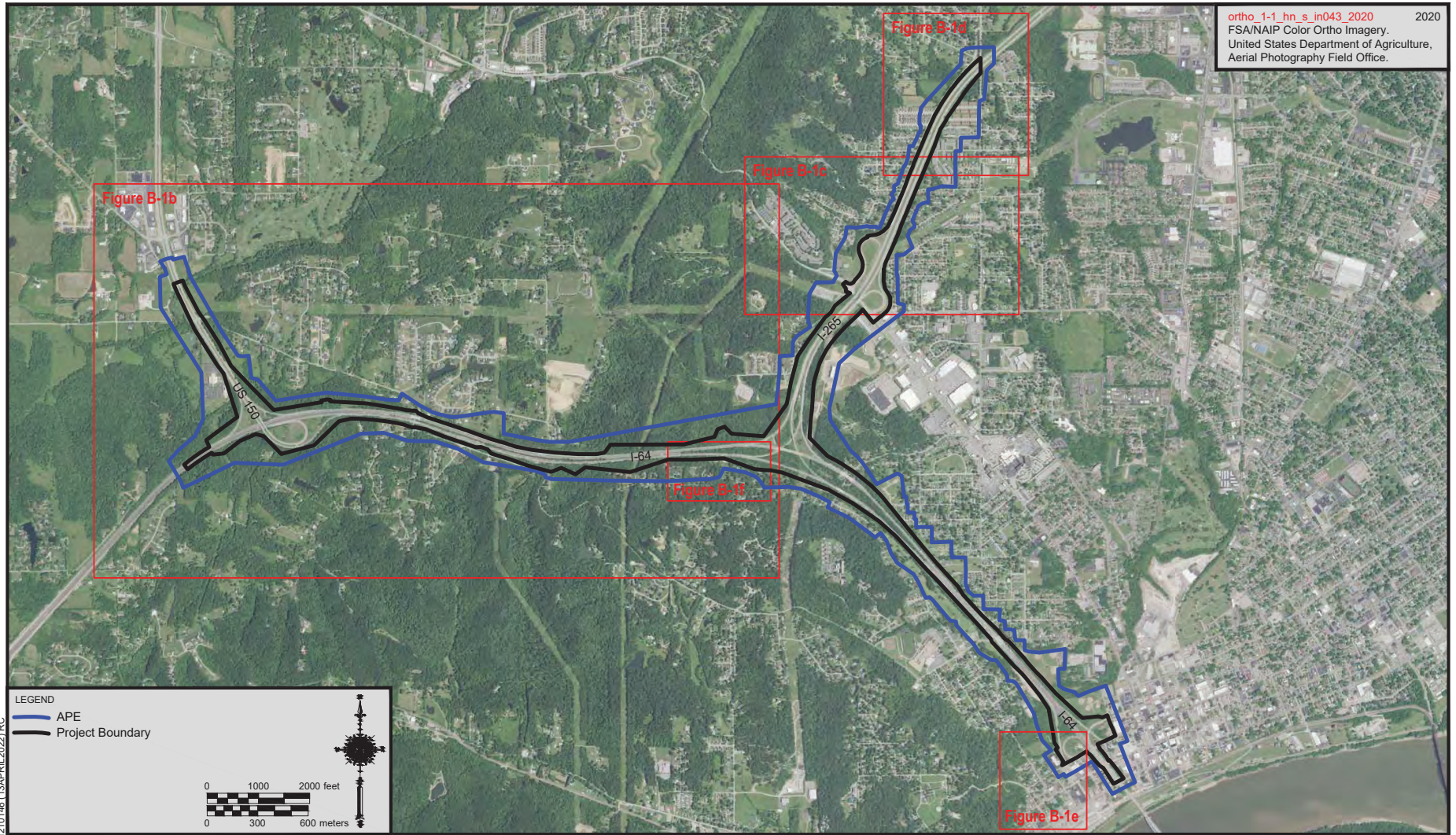


Figure B-1a. Key for the photo map of the project area.

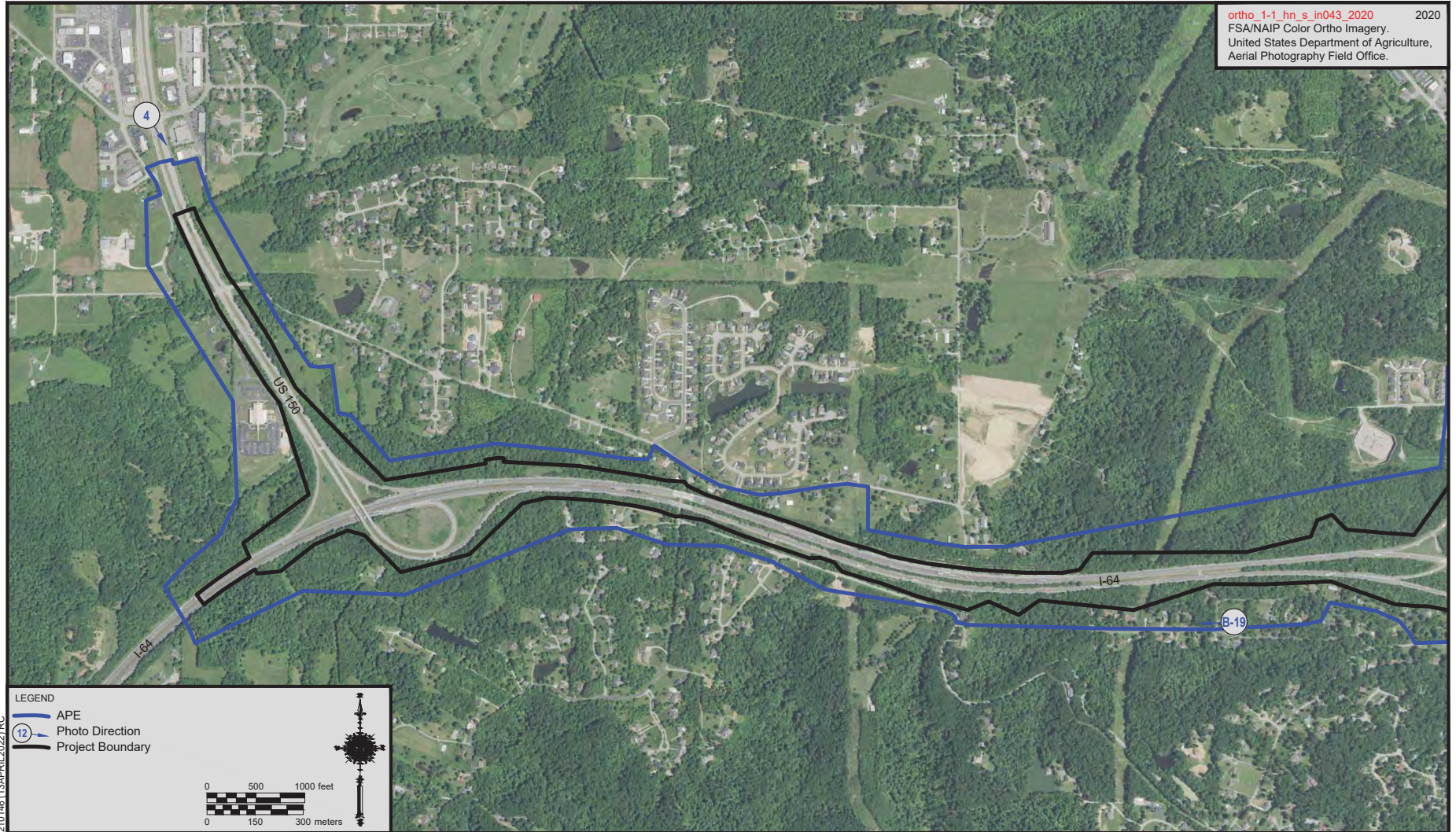


Figure B-1b. Photo map of project area.






Figure B-1c. Photo map of project area.

ortho\_1-1\_hn\_s\_in043\_2020 2020  
FSA/NAIP Color Ortho Imagery.  
United States Department of Agriculture,  
Aerial Photography Field Office.



LEGEND

-  APE
-  Photo Direction
-  Project Boundary

1210146 (13APRIL2022) RC



Figure B-1d. Photo map of project area.



Figure B-1e. Photo map of project area.



Figure B-1f. Photo map of project area.



Figure 8. Overview of the West End Historic District along the south side of West Spring Street, facing southwest.



Figure 9. Overview of the West End Historic District at the intersection of West Spring Street and West 7th Street, facing northeast.





Figure 29. Facade (south) and west elevation of INDOT 23, facing northeast.



Figure B-2. Overview of the West End Historic District at the intersection of West Spring Street and West 6th Street, facing northwest.



Figure B-3. Overview of the West End Historic District at the intersection of West Spring Street and West 7th Street, facing northwest.



Figure B-6. Overview of the West End Historic District along the north side of West Market Street, facing southwest.



Figure B-7. Overview of the West End Historic District at the intersection of West Market Street and West 8th Street, facing northwest.



Figure B-8. Overview of the West End Historic District at the intersection of West Market Street and West 8th Street, facing north.



Figure B-9. Overview of the West End Historic District at the intersection of West Market Street and West 7th Street, facing southeast.



Figure B-12. Overview of the Finchland Subdivision at the intersection of Maevi Drive and Rossmore Drive, facing southwest.



Figure B-13. INDOT 57 facade (east) and north elevation, facing southwest.



Figure B-14. Overview of the Glenview Heights Subdivision along the south side of Glenview Heights, facing southeast.



Figure B-15. Overview of the Glenview Heights Subdivision along the north side of Redwood Drive, facing northeast.



Figure B-16. Overview of the Glenview Heights Subdivision along the south side of Redwood Drive, facing southeast.



Figure B-17. Overview of the Glenview Heights Subdivision at the intersection of Redwood Drive and Redbud Drive, facing southeast.

# **APPENDIX C: Consulting Party List**



## Accepted Consulting Parties are Highlighted

### Consulting Party Early Coordination

#### Automatic Section 106 Consulting Parties:

#### Indiana Department of Natural Resources, Division of Historic Preservation & Archaeology, Indiana State Historic Preservation Office (SHPO)

402 W. Washington St., Room W274  
Indianapolis, Indiana 46204

#### Invited Consulting Parties:

#### Develop New Albany, Inc.

Teresa Baxter  
222 Pearl Street, Suite 109  
New Albany, IN 47150  
812.941.0018  
{[developnainfo@gmail.com](mailto:developnainfo@gmail.com)}

#### Floyd County Commissioners

President: Shawn Carruthers; Tim Kramer, &  
John Schellenberger  
2524 Corydon Pike, Suite 204  
New Albany, IN 47150  
812.948.5466  
{[FCCommissioners@floydcounty.in.gov](mailto:FCCommissioners@floydcounty.in.gov)}

#### Floyd County Highway Department

812.923.3041  
{[fcroaddept@floydcounty.in.gov](mailto:fcroaddept@floydcounty.in.gov)}

#### Floyd County Highway Engineer

Horacio Urieta, P.E.  
311 Hauss Square, Room 122  
New Albany, IN 47150  
812.948.5441  
{[hurieta@floydcounty.in.gov](mailto:hurieta@floydcounty.in.gov)}

#### Floyd County Historian

David C. Barksdale  
614 Terrace Court  
New Albany, IN 47150  
812.945.1839  
{[dddcbark@aol.com](mailto:dddcbark@aol.com)}

#### Floyd County Historical Society

David C. Barksdale, President  
PO Box 455  
New Albany, IN  
47151  
812.945.1839  
{[fchs@countyhistory.com](mailto:fchs@countyhistory.com)}

#### Floyd County Surveyor

William B. Gibson  
311 Hauss Square, Room 122  
New Albany, IN 47150  
812.948.5490  
{[surveyor@floydcounty.in.gov](mailto:surveyor@floydcounty.in.gov)}

#### Jeff M. Gahan, Mayor of New Albany

311 Hauss Square, Room 316  
New Albany, IN 47150  
812.948.5333

#### Indiana Landmarks Southern Regional Office

Greg Sekula, Director  
911 State Street  
New Albany, IN 47150  
812.284.4534  
{[gsekula@indianalandmarks.org](mailto:gsekula@indianalandmarks.org)}

#### Kentuckiana Regional Planning and Development Agency (KIPDA)

Jarrett Haley, Executive Director  
11520 Commonwealth Drive  
Louisville, KY 40299  
502.266.6084

#### New Albany City Council, 1<sup>st</sup> District

Jennie Collier  
624 W 8<sup>th</sup> Street  
New Albany, IN 47150  
812.207.0476  
{[jcollier@cityofnewalbany.com](mailto:jcollier@cityofnewalbany.com)}

#### New Albany City Council, 2<sup>nd</sup> District

Robert Caesar  
614 Camp Avenue  
New Albany, IN 47150  
502.552.7969  
{[rcaesar@cityofnewalbany.com](mailto:rcaesar@cityofnewalbany.com)}

**New Albany City Council, 3<sup>rd</sup> District**

Greg Phipps, President  
1105 E Spring Street  
New Albany, IN 47150  
812.949.8317  
{[ghipps@cityofnewalbany.com](mailto:ghipps@cityofnewalbany.com)}

**New Albany Historic Preservation  
Commission**

Scott Wood, Director of Planning  
311 Hauss Square, Room 329  
New Albany, IN 47150  
812.948.5333  
{[swood@cityofnewalbany.com](mailto:swood@cityofnewalbany.com)}

**River Hills Economic Development District**

Cory Cochran, Executive Director  
300 Spring Street, Suite 2A  
Jeffersonville, IN 47130  
812.288.4624  
{[info@riverhills.cc](mailto:info@riverhills.cc)}

**Delaware Tribe of Indians, Oklahoma**

**Eastern Shawnee Tribe of Oklahoma**

**Miami Tribe of Oklahoma**

**Peoria Tribe of Indians of Oklahoma**

**Pokagon Band of Potawatomi Indians**

**Shawnee Tribe**

**United Keetoowah Band of Cherokee Indians**

**Recently Invited Consulting Parties List: January 10, 2022**

**Amber Marie Ellnor & Gerald D. Kelly (owner of Horatio Devol House)**

225 Lafayette Street  
New Albany, Indiana 47150

**Hillo Holding, LLC (owner of the Reyse-(Roys[c]e) Friend House)**

229 W Spring Street  
New Albany, Indiana 47150

**Presley-Bell Enterprises, LLC (owner of James Carr House)**

217 W Spring Street  
New Albany, Indiana 47150

**Kathryn Lee Tilton & Aaron Fegenbush (owner of Frank & George Devol Double House)**

110 Pensive Road  
Clarksville, Indiana 47129

# APPENDIX D: Correspondence



# INDIANA DEPARTMENT OF TRANSPORTATION

100 North Senate Avenue  
Room N758-ES  
Indianapolis, Indiana 46204

PHONE: (317) 296-0799

**Eric Holcomb, Governor**  
**Joe McGuinness, Commissioner**

May 26, 2021

This letter was sent to the listed parties.

RE: FHWA Project: Des No 1900162; I-64 Added Travel Lanes, Floyd County, Indiana

Dear Consulting Party (see attached list),

The Indiana Department of Transportation (INDOT), with funding from the Federal Highway Administration (FHWA), proposes to proceed with an added travel lanes project along I-64 and I-265 (Des. No. 1900162) in Floyd County. Cultural Resource Analysts, Inc. (CRA) is under contract with INDOT to advance the environmental documentation for the referenced project.

This letter is part of the early coordination phase of the environmental review process requesting comments associated with the project. We are requesting comments from your area of expertise regarding any possible environmental effects associated with this project. Please use the above Des. No. and project description in your reply and your comments will be incorporated into the formal environmental study. This study will be conducted in accordance with the National Environmental Policy Act (NEPA). **INDOT and FHWA have not yet determined the NEPA class of action for the project (i.e., Categorical Exclusion, Environmental Assessment, or Environmental Impact Statement).** This determination will be made once more details about the proposed action are defined and potential human and natural environmental resources near the project have been identified.

The proposed undertaking is located along I-64 and I-265 in Floyd County, Indiana. A portion of the project is located in the City of New Albany. It is within Georgetown, Lafayette, and New Albany Townships, as shown on the Georgetown, Indiana and New Albany, Indiana USGS Topographic Quadrangles, in Sections 22, 27, 28, 29, 30, 31, 32, 33, and 34 in Township 2 South and Range 6 East, and Sections 2 and 3 in Township 3 South and Range 6 East.

The need for the project is due to existing traffic congestion as demonstrated by poor levels of service (LOS) on the interstate and interchange components within the project area. The purpose of the project is to reduce congestion and improve the LOS on the interstate and interchange components. The project will include work on sections of I-64, I-265, and US 150. The proposed project limits will extend northwest along I-64 for approximately 3.9 miles from its interchange at Spring Street in New Albany to the US 150 interchange and along I-265 for approximately 1.75 miles north-northeast to the Green Valley Road overpass. Right-of-way acquisition may be required for the project, but the amount and locations are currently not known. The project is anticipated to include the following elements:

- Addition of a travel lane in each direction on I-64 from US 150 to approximately Cherry Street (west of the Spring Street interchange), except for westbound I-64 between I-265 and Spring Street where no lanes will be added. In most areas, the additional lanes will be added to the median. Rock cuts will be necessary in some areas. The median may also be widened in some areas.

[www.in.gov/dot/](http://www.in.gov/dot/)  
**An Equal Opportunity Employer**



- Addition of travel/auxiliary lanes on I-265 from State Street to I-64. Lanes will be added to both the median and outside of I-265.
- Addition of lanes on the I-64/US 150 and I-64/I-265 interchange exit and entrance ramps.
- Traffic signal improvements at ramp terminal intersections, if determined necessary.
- Replacement and/or rehabilitation of pavement on I-64 and I-265.
- Relocation of ramps within the I-64/I-265 interchange; construction of new bridges is anticipated to accommodate the ramp relocations.
- Replacement, widening, and painting of bridges throughout the project area (see Table 1).
- Replacement of culverts and storm sewers, and construction of detention basins (see Table 2).
- Installation of guardrail as needed along I-64.
- Replacement and addition of signage and pavement markings.
- Replacement and addition of lighting.
- Above-ground and underground utility relocations.
- Acquisition of new right-of-way and building demolition for any relocations.
- A noise analysis will be completed for the project. As part of this analysis, possible noise barriers could be identified and analyzed to determine if they are reasonable and feasible in accordance with INDOT's Traffic Noise Analysis Procedure (2017).

**Table 1. Existing Bridges to be Replaced, Widened, or Painted**

<b>Location</b>	<b>Construction Date</b>	<b>Bridge #</b>
Eastbound (EB) US 150 over I-64	1966	150-22-04983 AEBL
Westbound (WB) US 150 over I-64	1966	150-22-04983 AWBL
EB I-64 over Quarry Rd.	1965	I-64-120-04984 JBEB
WB I-64 over Quarry Rd.	1965	I-64-120-04984 CWBL
WB I-64 over EB I-64 ramp to EB I-265	1965	I-64-121-04985 RCB
WB I-64 over WB I-265 ramp to EB I-64	1965	I-64-121-04985 RBB
WB I-265 ramp to EB I-64 over EB I-64 ramp to EB I-265	1972	(I-64) I-265-00-05228B
EB I-64 over Captain Frank Rd.,	1965	I-64-121-04986 JCEB
WB I-64 over Captain Frank Rd.	1965	I-64-121-04986 CWBL
EB and WB I-64 over Cherry St.	1965	I-64-122-04988C
I-64 over Fall Run at SBEX / NBEN gore of Spring St I/C	1965	I64-123-04687
EB I-265 & Ramp over State St.	1972 (JBEB)/1983 (DRCA)	I-265-00-05513 JBEB & DRCA
US 150 EB over Little Indian Creek	1965	150-22-05230 BEB
US 150 WB over Little Indian Creek	1965	150-22-05230 BWB

Table 2. List of Culverts to be Replaced or Rehabilitated

Location	Stream	CV Asset ID
I-265 WB at I-64 I/C	UNT Valley View Creek	CV I265-022-0WB R1
I-265, at State St I/C NBEX Gore	Trinity Run	CV I265-022-0.71
I-265, at State St I/C SBEX Gore	UNT Green Run	CV I265-022-1.05
I-265, 500 ft N of Glenview Heights Road	Green Run	CV I265-022-1.35
I-265, 1500 ft W of Green Valley Road	UNT Falling Run	CV I265-022-1.57
I-265, 700 ft W of Green Valley Road	Lost Knob Brook	CV I265-022-1.70
I-64, at SR 150 I/C WBEN Gore	UNT Little Indian Creek	CV I64-022-119.35
I-64, 1800 ft W of I-265 I/C	UNT Valley View Creek	No Str. Number
I-64, at west end of I-265 I/C	Hill Brook	No Str. Number
I-64 WB and I-64 EBR at I-265 I/C	UNT Valley View Creek	CV I64-022-121.61 R
I-64 WB at I-265 I/C	UNT Valley View Creek	CV I64-022-121.71 EB
I-64 EB at Captain Frank Road	UNT Valley View Creek	CV I64-022-121.95 EB
I-64 WB at I-265 I/C	UNT Valley View Creek	CV I64-022-122.14 WB
Along I-64 EB	Valley View Creek	CV I64-022-122.90 EB ADJ

The maintenance of traffic plan will include keeping the existing number of lanes of traffic in each direction (two to three depending on location) throughout the majority of construction. Although, intermittent lane restrictions will be implemented on I-64 and I-265. It is also anticipated that Quarry Road, Captain Frank Road, and Cherry Street will be closed for periods during construction of the bridges above, and construction of foundations adjacent to, those roadways. Nighttime closures may be required for construction activities along State Street.

Section 106 of the National Historic Preservation Act requires federal agencies to take into account the effects of their undertakings on historic and archaeological properties. In accordance with 36 CFR 800.2 (c), you are hereby requested to be a consulting party to participate in the Section 106 process. Entities that have been invited to participate in the Section 106 consultation process for this project are identified in the attached list. Per 36 CFR 800.3(f), we hereby request that the Indiana State Historic Preservation Officer (SHPO) notify this office if the SHPO staff is aware of any other parties that may be entitled to be consulting parties or should be contacted as potential consulting parties for the project.

The Section 106 process involves efforts to identify historic properties potentially affected by the undertaking, assess its effects and seek ways to avoid, minimize or mitigate any adverse effects on historic properties. For more information regarding the protection of historic resources, please see the Advisory Council on Historic Preservation’s guide: *Protecting Historic Properties: A Citizen’s Guide to Section 106 Review* available online at <https://www.achp.gov/sites/default/files/documents/2017-01/CitizenGuide.pdf>

The Area of Potential Effects (APE) is the area in which the proposed project may cause alterations in the character or use of historic resources. At this time, no cultural resource investigations have occurred; however, the results of cultural resource identification and evaluation efforts, both above-ground and archaeological, will be forthcoming. Consulting parties will receive notification when these reports are completed.

Please review the information and comment within thirty (30) calendar days of receipt. If you indicate that you do not desire to be a consulting party, or if you do not respond, you will not be included on the list of consulting parties for this project. If we do not receive your response in the time allotted, the project will proceed consistent with the proposed design and you will not receive further information

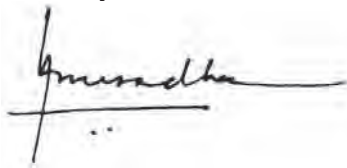
about the project unless the design changes. Tribal consulting parties may enter the process at any time and are encouraged to respond to this notification with any comments or concerns at their earliest convenience.

For questions concerning specific project details, you may contact Alyssa Reynolds of Cultural Resource Analysts, Inc. (CRA) at (812) 253-3009 or [adreynolds@crai-ky.com](mailto:adreynolds@crai-ky.com). All future responses regarding the proposed project should be forwarded to CRA at the following address:

Alyssa Reynolds  
Architectural Historian  
Cultural Resource Analysts, Inc. (CRA)  
201 NW 4<sup>th</sup> Street, Suite 204  
Evansville, Indiana 47708  
[adreynolds@crai-ky.com](mailto:adreynolds@crai-ky.com)

Tribal contacts may contact Shaun Miller at [smiller@indot.in.gov](mailto:smiller@indot.in.gov) or 317-416-0876 or Kari-Carmany-George at FHWA at [K.CarmanyGeorge@dot.gov](mailto:K.CarmanyGeorge@dot.gov) or 317-226-5629.

Sincerely,

A handwritten signature in black ink, appearing to read "Anuradha", written over a horizontal line. The signature is fluid and cursive.

Anuradha V. Kumar, Manager  
Cultural Resources Office  
Environmental Services

Enclosures: Distribution List, USGS Topographic map, and Aerial View Map.

**Consulting Party Early Coordination**

**Automatic Section 106 Consulting Parties:**  
**Indiana Department of Natural Resources,  
Division of Historic Preservation &  
Archaeology, Indiana State Historic  
Preservation Office (SHPO)**  
402 W. Washington St., Room W274  
Indianapolis, Indiana 46204

**Invited Consulting Parties:**

**Develop New Albany, Inc.**  
Teresa Baxter  
222 Pearl Street, Suite 109  
New Albany, IN 47150  
812.941.0018  
{[developnainfo@gmail.com](mailto:developnainfo@gmail.com)}

**Floyd County Commissioners**  
President: Shawn Carruthers; Tim Kramer, &  
John Schellenberger  
2524 Corydon Pike, Suite 204  
New Albany, IN 47150  
812.948.5466  
{[FCCCommissioners@floydcounty.in.gov](mailto:FCCCommissioners@floydcounty.in.gov)}

**Floyd County Highway Department**  
812.923.3041  
{[fcroaddept@floydcounty.in.gov](mailto:fcroaddept@floydcounty.in.gov)}

**Floyd County Highway Engineer**  
Horacio Urieta, P.E.  
311 Hauss Square, Room 122  
New Albany, IN 47150  
812.948.5441  
{[hurieta@floydcounty.in.gov](mailto:hurieta@floydcounty.in.gov)}

**Floyd County Historian**  
David C. Barksdale  
614 Terrace Court  
New Albany, IN 47150  
812.945.1839  
{[dddcbark@aol.com](mailto:dddcbark@aol.com)}

**Floyd County Historical Society**  
David C. Barksdale, President  
PO Box 455  
New Albany, IN  
47151  
812.945.1839  
{[fchs@countyhistory.com](mailto:fchs@countyhistory.com)}

**Floyd County Surveyor**  
William B. Gibson  
311 Hauss Square, Room 122  
New Albany, IN 47150  
812.948.5490  
{[surveyor@floydcounty.in.gov](mailto:surveyor@floydcounty.in.gov)}

**Jeff M. Gahan, Mayor of New Albany**  
311 Hauss Square, Room 316  
New Albany, IN 47150  
812.948.5333

**Indiana Landmarks Southern Regional  
Office**  
Greg Sekula, Director  
911 State Street  
New Albany, IN 47150  
812.284.4534  
{[gsekula@indianalandmarks.org](mailto:gsekula@indianalandmarks.org)}

**Kentuckiana Regional Planning and  
Development Agency (KIPDA)**  
Jarrett Haley, Executive Director  
11520 Commonwealth Drive  
Louisville, KY 40299  
502.266.6084

**New Albany City Council, 1<sup>st</sup> District**  
Jennie Collier  
624 W 8<sup>th</sup> Street  
New Albany, IN 47150  
812.207.0476  
{[jcollier@cityofnewalbany.com](mailto:jcollier@cityofnewalbany.com)}

**New Albany City Council, 2<sup>nd</sup> District**  
Robert Caesar  
614 Camp Avenue  
New Albany, IN 47150  
502.552.7969  
{[rcaesar@cityofnewalbany.com](mailto:rcaesar@cityofnewalbany.com)}



**New Albany City Council, 3<sup>rd</sup> District**

Greg Phipps, President  
1105 E Spring Street  
New Albany, IN 47150  
812.949.8317  
{[gphipps@cityofnewalbany.com](mailto:gphipps@cityofnewalbany.com)}

**New Albany Historic Preservation  
Commission**

Scott Wood, Director of Planning  
311 Hauss Square, Room 329  
New Albany, IN 47150  
812.948.5333  
{[swood@cityofnewalbany.com](mailto:swood@cityofnewalbany.com)}

**River Hills Economic Development District**

Cory Cochran, Executive Director  
300 Spring Street, Suite 2A  
Jeffersonville, IN 47130  
812.288.4624  
{[info@riverhills.cc](mailto:info@riverhills.cc)}

**Delaware Tribe of Indians, Oklahoma**

**Eastern Shawnee Tribe of Oklahoma**

**Miami Tribe of Oklahoma**

**Peoria Tribe of Indians of Oklahoma**

**Pokagon Band of Potawatomi Indians**

**Shawnee Tribe**

**United Keetoowah Band of Cherokee Indians**

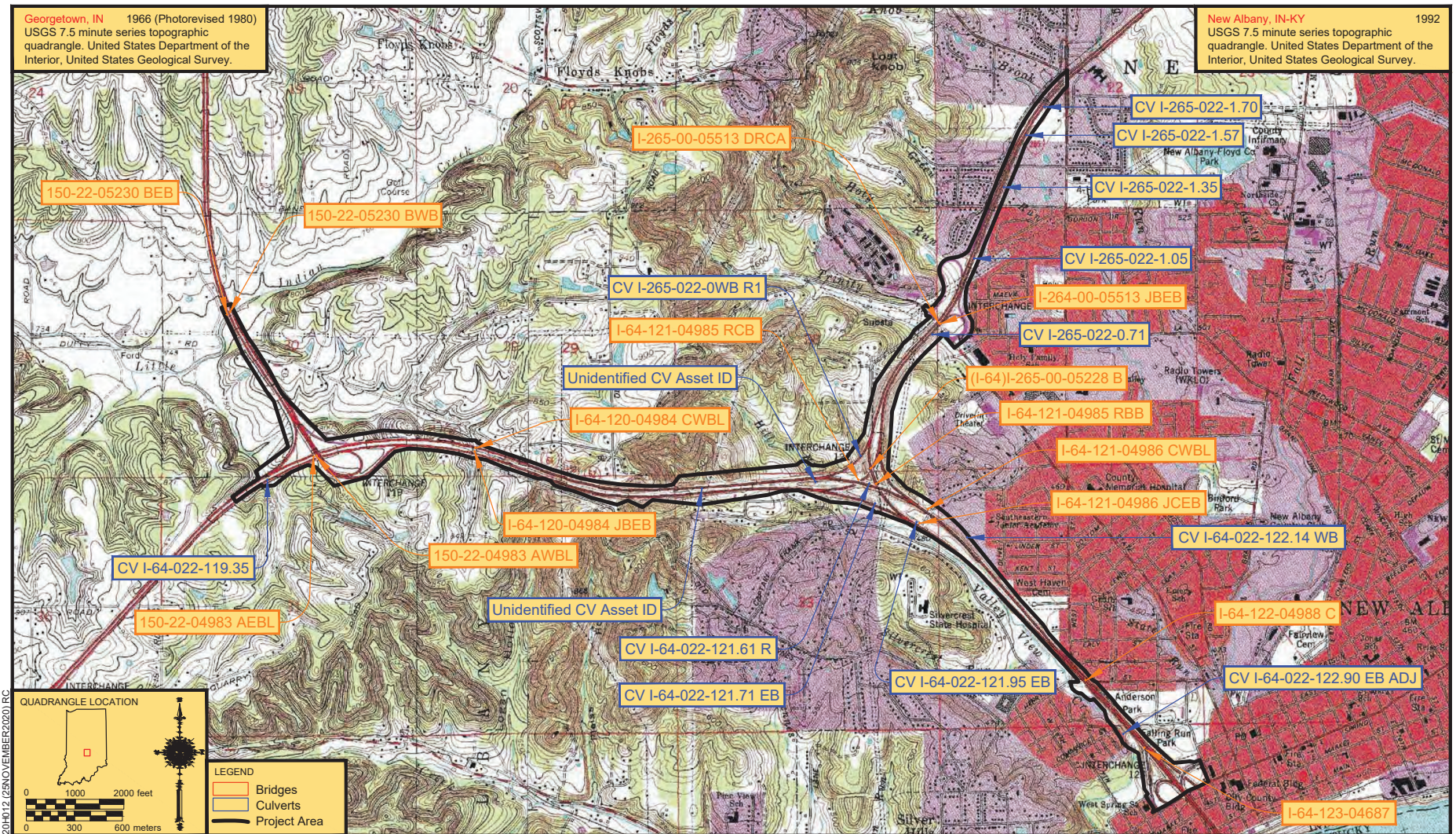


Figure 1. Topographic quadrangle showing the location of the project area and the location of the structures.



Figure 2. Aerial map showing the location of the project area and the location of the structures.

## Alyssa Reynolds

---

**From:** Alyssa Reynolds <adreynolds@crai-ky.com>  
**Sent:** Thursday, May 27, 2021 2:14 PM  
**To:** developnainfo@gmail.com; FCCCommissioners@floydcounty.in.gov; fcroaddept@floydcounty.in.gov; hurieta@floydcounty.in.gov; dddcbark@aol.com; fchs@countyhistory.com; surveyor@floydcounty.in.gov; gsekula@indianalandmarks.org; jcollier@cityofnewalbany.com; rcaesar@cityofnewalbany.com; ghipps@cityofnewalbany.com; swood@cityofnewalbany.com; info@riverhills.cc  
**Cc:** Andrew Martin; Robert Ball; 'Prince, Greg'; 'Dan Thatcher'; 'Kumar, Anuradha'; 'Branigin, Susan'; 'Miller, Shaun (INDOT)'; 'Kia Gillette'; 'Carpenter, Patrick A'  
**Subject:** FHWA Project: Des. No. 1900162; ECL; I-64 Added Travel Lanes, Floyd County, Indiana  
**Attachments:** I-64\_Added Travel Lanes\_Des 1900162\_ECL\_2021\_05\_26.pdf

All,

**Des. No.: 1900162**

**Project Description:** I-64 added travel lanes project

**Location:** Georgetown, Lafayette, & New Albany Townships, Floyd County, Indiana

The Indiana Department of Transportation, with funding from the Federal Highway Administration, proposes to proceed with the I-64 added travel lanes project; Des No 1900162.

Section 106 of the National Historic Preservation Act requires federal agencies to take into account the effects of their undertakings on historic properties. The following agencies/individuals are being invited to become consulting parties:

Indiana Department of Natural Resources  
Division of Historic Preservation & Archaeology  
Indiana State Historic Preservation Office (SHPO)

Develop New Albany, Inc.

Floyd County Commissioners

Floyd County Highway Department

Floyd County Highway Engineer

Floyd County Historian

Floyd County Historical Society

Floyd County Surveyor

Jeff M. Gahan, Mayor of New Albany

Indiana Landmarks Southern Regional Office

Kentuckiana Regional Planning and Development Agency (KIPDA)

New Albany City Council, 1<sup>st</sup> District

New Albany City Council, 2<sup>nd</sup> District

New Albany City Council, 3<sup>rd</sup> District

New Albany Historic Preservation Commission

River Hills Economic Development District

Delaware Tribe of Indians, Oklahoma

Eastern Shawnee Tribe of Oklahoma

Miami Tribe of Oklahoma

Peoria Tribe of Indians of Oklahoma

Pokagon Band of Potawatomi Indians

Shawnee Tribe

United Keetoowah Band of Cherokee Indians

This letter is part of the early coordination phase of the environmental review process requesting comments associated with this project. We are requesting comments from your area of expertise regarding any possible environmental effects associated with this project. Please use the above Des. Number and project description in your reply and your comments will be incorporated into the formal environmental study.

Please review the attached letter, which is also located in IN SCOPE at <http://erms.indot.in.gov/Section106Documents/> (the Des. No. is the most efficient search term, once in IN SCOPE), and respond with your comments on any historic resource impacts incurred as a result of this project so that an environmental report can be completed. We also welcome your related opinions and other input to be considered in the preparation of the environmental document. If a hard copy of the materials is needed, please respond to this email with your request as soon as you can.

Consulting parties have thirty (30) calendar days from receipt of this information to review and provide comments. If we do not receive a response from an invited consulting party within the time allotted, the project will proceed consistent with the proposed design. Tribal consulting parties may enter the process at any time and are encouraged to respond to this notification with any comments or concerns at their earliest convenience.

Tribal contacts may contact Shaun Miller at [smiller@indot.in.gov](mailto:smiller@indot.in.gov) or 317-416-0876 or Kari Carmany-George at FHWA at [K.CarmanyGeorge@dot.gov](mailto:K.CarmanyGeorge@dot.gov) or 317-226-5629.

Thank you in advance for your input,

**Alyssa Reynolds**  
Architectural Historian  
[adreynolds@crai-ky.com](mailto:adreynolds@crai-ky.com)

Indiana Office  
201 NW 4th Street, Suite 204  
Evansville, Indiana 47708  
812.253.3009 office  
812.253.3010 fax  
812.549.4503 cell  
<http://www.crai-ky.com>



***Celebrating 38 Years in Business!***

## Alyssa Reynolds

---

**From:** Alyssa Reynolds <adreynolds@crai-ky.com>  
**Sent:** Thursday, May 27, 2021 2:13 PM  
**To:** 'Slider, Chad (DNR)'; 'McCord, Beth K'; 'Burkett, Miriam'; dhpareview  
**Cc:** Andrew Martin; Robert Ball; 'Prince, Greg'; 'Dan Thatcher'; 'Kumar, Anuradha'; 'Branigin, Susan'; 'Miller, Shaun (INDOT)'; 'Kia Gillette'; 'Carpenter, Patrick A'  
**Subject:** FHWA Project: Des. No. 1900162; ECL; I-64 Added Travel Lanes, Floyd County, Indiana  
**Attachments:** I-64\_Added Travel Lanes\_Des 1900162\_DHPA form\_2021\_05\_26.pdf; I-64\_Added Travel Lanes\_Des 1900162\_ECL\_2021\_05\_26.pdf

All,

A hard copy of the attachments will be mailed to you by early next week.

**Des. No.: 1900162**

**Project Description:** I-64 added travel lanes project

**Location:** Georgetown, Lafayette, & New Albany Townships, Floyd County, Indiana

The Indiana Department of Transportation, with funding from the Federal Highway Administration, proposes to proceed with the I-64 added travel lanes project; Des No 1900162.

Section 106 of the National Historic Preservation Act requires federal agencies to take into account the effects of their undertakings on historic properties. The following agencies/individuals are being invited to become consulting parties:

Indiana Department of Natural Resources  
Division of Historic Preservation & Archaeology  
Indiana State Historic Preservation Office (SHPO)

Develop New Albany, Inc.

Floyd County Commissioners

Floyd County Highway Department

Floyd County Highway Engineer

Floyd County Historian

Floyd County Historical Society

Floyd County Surveyor

Jeff M. Gahan, Mayor of New Albany

Indiana Landmarks Southern Regional Office

Kentuckiana Regional Planning and Development Agency (KIPDA)

New Albany City Council, 1<sup>st</sup> District

New Albany City Council, 2<sup>nd</sup> District

New Albany City Council, 3<sup>rd</sup> District

New Albany Historic Preservation Commission

River Hills Economic Development District

Delaware Tribe of Indians, Oklahoma

Eastern Shawnee Tribe of Oklahoma

Miami Tribe of Oklahoma

Peoria Tribe of Indians of Oklahoma

Pokagon Band of Potawatomi Indians

Shawnee Tribe

United Keetoowah Band of Cherokee Indians



This letter is part of the early coordination phase of the environmental review process requesting comments associated with this project. We are requesting comments from your area of expertise regarding any possible environmental effects associated with this project. Please use the above Des. Number and project description in your reply and your comments will be incorporated into the formal environmental study.

Please review the attached letter, which is also located in IN SCOPE at <http://erms.indot.in.gov/Section106Documents/> (the Des. No. is the most efficient search term, once in IN SCOPE), and respond with your comments on any historic resource impacts incurred as a result of this project so that an environmental report can be completed. We also welcome your related opinions and other input to be considered in the preparation of the environmental document. If a hard copy of the materials is needed, please respond to this email with your request as soon as you can.

Consulting parties have thirty (30) calendar days from receipt of this information to review and provide comments. If we do not receive a response from an invited consulting party within the time allotted, the project will proceed consistent with the proposed design. Tribal consulting parties may enter the process at any time and are encouraged to respond to this notification with any comments or concerns at their earliest convenience.

Tribal contacts may contact Shaun Miller at [smiller@indot.in.gov](mailto:smiller@indot.in.gov) or 317-416-0876 or Kari Carmany-George at FHWA at [K.CarmanyGeorge@dot.gov](mailto:K.CarmanyGeorge@dot.gov) or 317-226-5629.

Thank you in advance for your input,

**Alyssa Reynolds**  
Architectural Historian  
[adreynolds@crai-ky.com](mailto:adreynolds@crai-ky.com)

Indiana Office  
201 NW 4th Street, Suite 204  
Evansville, Indiana 47708  
812.253.3009 office  
812.253.3010 fax  
812.549.4503 cell  
<http://www.crai-ky.com>



***Celebrating 38 Years in Business!***

## Alyssa Reynolds

---

**From:** Carpenter, Patrick A <PACarpenter@indot.IN.gov>  
**Sent:** Thursday, May 27, 2021 2:41 PM  
**To:** thpo@estoo.net; Larry Heady; Diane Hunter; lpappenfort@peoriatribe.com; matthew.bussler@pokagonband-nsn.gov; tonya@shawnee-tribe.com; Erica Gorsuch  
**Cc:** Miller, Shaun (INDOT); Tait, Erica (FHWA); Carmany-George, Karstin (FHWA); Alyssa Reynolds; Kia Gillette (kgillette@hntb.com)  
**Subject:** FHWA Project: Des. No. 1900162; ECL; I-64 Added Travel Lanes, Floyd County, Indiana

Dear consulting parties,

I'm using Adobe Acrobat.

You can view "I-64\_Added Travel Lanes\_Des 1900162\_ECL\_2021\_05\_26.pdf" at:

<https://documentcloud.adobe.com/link/track?uri=urn:aaid:scds:US:0ac9c6b0-63ae-4831-a4ff-d2e7908f963d>

**Des. No.: 1900162**

**Project Description:** I-64 added travel lanes project

**Location:** Georgetown, Lafayette, & New Albany Townships, Floyd County, Indiana

The Indiana Department of Transportation, with funding from the Federal Highway Administration, proposes to proceed with the I-64 added travel lanes project; Des No 1900162.

Section 106 of the National Historic Preservation Act requires federal agencies to take into account the effects of their undertakings on historic properties.

This letter is part of the early coordination phase of the environmental review process requesting comments associated with this project. We are requesting comments from your area of expertise regarding any possible environmental effects associated with this project. Please use the above Des. Number and project description in your reply and your comments will be incorporated into the formal environmental study.

Please review the attached letter, which is also located in IN SCOPE at <http://erms.indot.in.gov/Section106Documents/> (the Des. No. is the most efficient search term, once in IN SCOPE), and respond with your comments on any historic resource impacts incurred as a result of this project so that an environmental report can be completed. We also welcome your related opinions and other input to be considered in the preparation of the environmental document. If a hard copy of the materials is needed, please respond to this email with your request as soon as you can.

Consulting parties have thirty (30) calendar days from receipt of this information to review and provide comments. If we do not receive a response from an invited consulting party within the time allotted, the project will proceed consistent with the proposed design. Tribal consulting parties may enter the process at any time and are encouraged to respond to this notification with any comments or concerns at their earliest convenience.

Tribal contacts may contact Shaun Miller at [smiller@indot.in.gov](mailto:smiller@indot.in.gov) or 317-416-0876 or Kari Carmany-George at FHWA at [K.CarmanyGeorge@dot.gov](mailto:K.CarmanyGeorge@dot.gov) or 317-226-5629.

Thank you in advance for your input,

Patrick Carpenter  
Section 106 Specialist, Cultural Resources Office  
Environmental Services  
Indiana Department of Transportation  
100 N Senate Ave., IGCN- Room N758-ES  
Indianapolis, IN 46204-2216  
**317-416-7960\***

\*Please note new phone number.

Division of Historic Preservation & Archaeology · 402 W. Washington Street, W274 · Indianapolis, IN 46204-2739  
Phone 317-232-1646 · Fax 317-232-0693 · dhpa@dnr.IN.gov · www.IN.gov/dnr/historic



June 25, 2021

Alyssa Reynolds  
CRA, Inc.  
201 NW 4<sup>th</sup> Street, Suite 204  
Evansville, Indiana 47648

Federal Agency: Indiana Department of Transportation (“INDOT”),  
on behalf of Federal Highway Administration, Indiana Division (“FHWA”)

Re: Early coordination letter for added travel lanes along I-64 and I-265, in Georgetown, Lafayette & New  
Albany townships, Floyd County, Indiana (Des. No. 1900162; DHPA No. 27559)

Dear Ms. Reynolds:

Pursuant to Section 106 of the National Historic Preservation Act of 1966, as amended (54 U.S.C. § 306108), 36 C.F.R. Part 800, and the “Programmatic Agreement (PA) Among the Federal Highway Administration, the Indiana Department of Transportation, the Advisory Council on Historic Preservation and the Indiana State Historic Preservation Officer Regarding the Implementation of the Federal Aid Highway Program In the State of Indiana,” the staff of the Indiana State Historic Preservation Officer (“Indiana SHPO”) has reviewed your May 26, 2021 submission which enclosed INDOT’s early coordination letter, received by our office on May 28, 2021.

We are not aware of any parties who should be invited to participate in the Section 106 consultation on this federal undertaking, beyond those whom INDOT already has invited. However, if right-of-way is likely to be taken from a potentially historic property, it might be advisable to invite the owner of that property as soon as possible. In your next regular correspondence on this project, please advise us as to which of the invited consulting parties has accepted the invitation.

We look forward to reviewing the proposed area of potential effects and the reports on investigations of above-ground cultural resources and archaeological resources that the early coordination letter indicated will be forthcoming.

The Indiana SHPO staff’s archaeological reviewer for this project is Rachel Sharkey, and the structures reviewer is Chad Slider. However, if you have a question about the Section 106 process, please contact initially the INDOT Cultural Resources staff members who are assigned to this project.

In all future correspondence about the added travel lanes along I-64 and I-265 in Floyd County (Des. No. 1900162), please refer to DHPA No. 27559.

Very truly yours,

A handwritten signature in black ink, appearing to read "Beth K. McCord".

Beth K. McCord  
Deputy State Historic Preservation Officer

BKM:CWS:RAS:ras

emc: Anuradha Kumar, INDOT  
Shaun Miller, INDOT  
Susan Branigin, INDOT  
Anthony Ross, INDOT  
Rachel Sharkey, DNR-DHPA  
Chad Slider, DNR-DHPA



Jeff M. Gahan, Mayor

CITY OF NEW ALBANY, INDIANA  
NEW ALBANY CITY PLAN COMMISSION  
NEW ALBANY BOARD OF ZONING APPEALS  
SCOTT B. WOOD, DIRECTOR

12 July 2021

Kia M. Gillette  
Environmental Project Manager  
HNTB Corporation

VIA EMAIL

In Reference: DES. No. 1900162 I-64 Improvement Project

Ms. Gillette:

I am the Director of Planning and Zoning for the City of New Albany and I write in regards to the early coordination letter from InDOT for the I-64 Improvement Project dated 28 June 2021. I believe InDOT should be aware of a number of issues related to the proposed project, as follows:

*1. Historic Resources*

The City of New Albany published an updated inventory of historic structures in 1991 "City of New Albany, Interim Report: Indiana Historic Sites and Structures Report" which predominantly studied neighborhoods and development up to the cusp of American involvement in World War II. In the 30 years since that update, a significant number of post-World War II homes and structures have become eligible for listing in the National Register of Historic Places, including many in the likely Area of Potential Effects (APE) for this project. These structures are primarily residences along west side of I-64 and include Valley View Road, Captain Frank Road, Wildwood Lane, and Braeview Drive. These properties were not surveyed and so were not included in the 1991 Interim Report. The vicinity is not included in the IDNR SHAARD database. On the east side of I-64 lies a working class neighborhood and includes an early local public housing project built to house victims of the great 1937 flood (Valley View Court), and a historic African American public cemetery (Westhaven Cemetery). Some of this area is included in the 1991 Interim Report as "scattered sites" and thus is partly included in SHAARD.

*2. Creeks and flooding*

Valley View Creek extends along the west side of I-64, after relocation during original construction of the freeway. Valley View is an important public conveyance leading to Falling Run Creek, approximately three-quarters of a mile north of the Ohio River. Falling Run Creek drains approximately two-thirds of the land inside I-64 and I-265 (Lee Hamilton Expressway). Care in addressing these two important creeks will be

City-County Building 311 Hauss Square -Suite 329 • New Albany, Indiana 47150  
Telephone: (812) 948-5333 • Indiana Statewide Relay 1-800-743-3333 (Hearing Impaired)  
Fax: (812) 981-3776 • [www.cityofnewalbany.com](http://www.cityofnewalbany.com)



Jeff M. Gahan, Mayor

CITY OF NEW ALBANY, INDIANA  
NEW ALBANY CITY PLAN COMMISSION  
NEW ALBANY BOARD OF ZONING APPEALS  
SCOTT B. WOOD, DIRECTOR

required to minimize and possible future flooding.

### 3. *Noise*

Numerous residents along the I-64 corridor in New Albany have complained to the City about high levels of ambient noise from I-64 and, in particular, the use of engine brakes (Jake Brake) by semi trucks descending from rural Floyd County into downtown New Albany and across the Sherman Minton Bridge. Interstate noise may be worsened by the Interstate's proximity to the southern limits of the Knobstone Escarpment, which rises some 150' above the adjacent freeway. The City believes that a noise study is warranted and abatement measures will be necessary.

Please consider this letter as the City of New Albany's official request to be a consulting party as this project moves forward.

If you have any questions, you may contact me at this office.

NEW ALBANY CITY PLAN COMMISSION

Scott B. Wood  
Director

Copies: Robert J. Norwood, President, New Albany City Plan Commission  
Shane L. Gibson, Corporate Counsel



# INDIANA DEPARTMENT OF TRANSPORTATION

100 North Senate Avenue  
Room N758-ES  
Indianapolis, Indiana 46204

PHONE: (317) 296-0799

**Eric Holcomb, Governor**  
**Joe McGuinness, Commissioner**

January 10, 2021

This letter was sent to the listed parties.

RE: FHWA Project: Des No 1900162; Improve 64 Project; I-64 Added Travel Lanes from US 150 to Main Street, Floyd County, Indiana

Dear Consulting Party (see attached list),

The Indiana Department of Transportation (INDOT), with funding from the Federal Highway Administration (FHWA), proposes to proceed with the Improve 64 project along I-64 and I-265 (Des. No. 1900162) in Floyd County. The name of the project has been updated to Improve 64 since the last Section 106 correspondence. Cultural Resource Analysts, Inc. (CRA) is under contract with INDOT to advance the environmental documentation for the referenced project.

This letter is part of the Section 106 review process for this project. Section 106 of the National Historic Preservation Act requires federal agencies to take into account the effects of their undertakings on historic and archaeological properties. We are requesting comments from you regarding the possible effects of this project. Please use the above Des. Number and project description in your reply and your comments will be incorporated into the formal environmental study. This study will be conducted in accordance with the National Environmental Policy Act (NEPA). **INDOT and FHWA have not yet determined the NEPA class of action for the project (i.e., Categorical Exclusion, Environmental Assessment, or Environmental Impact Statement).** This determination will be made once more details about the proposed action are defined.

A Section 106 early coordination letter was completed on May 26, 2021, but was distributed on March 27, 2021.

The proposed undertaking is located along I-64 and I-265 in Floyd County, Indiana. A portion of the project is located in the City of New Albany. It is within Georgetown, Lafayette, and New Albany Townships, as shown on the Georgetown, Indiana and New Albany, Indiana USGS Topographic Quadrangles, in Sections 22, 27, 28, 29, 30, 31, 32, 33, and 34 in Township 2 South and Range 6 East, and Sections 2 and 3 in Township 3 South and Range 6 East.

The need for the project is due to existing traffic congestion as demonstrated by poor levels of service (LOS) on the interstate and interchange components within the project area. The purpose of the project is to reduce congestion and improve the LOS on the interstate and interchange components. The project will include work on sections of I-64, I-265, and US 150. The proposed project limits will extend northwest along I-64 from approximately 4.23 miles from the I-64 bridge over Main Street in New Albany to the US 150 interchange and along I-265 for approximately 1.75 miles north-northeast to approximately the Green Valley Road overpass. The project area has increased from the previous 3.9 mile-long project area along the I-64 corridor to accommodate road resurfacing along I-64, south of Spring Street to Main Street.

[www.in.gov/dot/](http://www.in.gov/dot/)  
**An Equal Opportunity Employer**





Minimal right-of-way (ROW) acquisition may be required. At this time, the exact amount of ROW has not been determined. As the project continues to develop, design changes have occurred since the release of the early coordination letter on March 27, 2021. Currently, the project is anticipated to include the following elements:

- Addition of a travel lane in each direction on I-64 from US 150 to 2,000 feet north of Cherry Street. In most areas, the additional lanes will be added to the median where rock excavation will be necessary.
- Addition of an auxiliary lane on eastbound I-265 from I-64 to State Street and a travel lane on eastbound I-265 from I-64 to 4,000 feet east of State Street. The auxiliary lane will be added on the outside and the travel lane added within the median.
- Addition of one lane to all I-64/I-265 interchange ramps and one lane on the I-64 westbound exit ramp to US 150.
- Replacement and/or rehabilitation of pavement on I-64, I-265, and US 150.
- Relocation of the eastbound I-64 to eastbound I-265 ramp within the I-64/I-265 interchange. Construction of a new bridge on eastbound I-64 is required to accommodate the ramp relocation.
- Replacement, widening, and deck rehabilitation of bridges throughout the project area.
- Replacement of culverts and storm sewers, and construction of detention basins
- Installation of guardrail and concrete barrier wall as needed along I-64.
- Replacement and addition of signage, lighting, ITS conduit, and pavement markings.
- Above-ground and underground utility relocations.
- Acquisition of new right-of-way and building demolition for any relocations.
- Construction of retaining walls at multiple locations to minimize right-of-way acquisition and to accommodate new traffic lanes added within the narrowed median along I-64 between US 150 and I-265.
- A noise analysis will be completed for the project. As part of this analysis, possible noise barriers could be identified and analyzed to determine if they are reasonable and feasible in accordance with INDOT's Traffic Noise Analysis Procedure (2017).

The maintenance of traffic plan is anticipated to keep the existing number of lanes of traffic in each direction (two to three depending on location) throughout the majority of construction. Although, intermittent lane restrictions will be implemented on I-64 and I-265. It is also anticipated that Quarry Road, Captain Frank Road, and Cherry Street will be closed for periods during construction of the bridges above, and construction of foundations adjacent to, those roadways. Nighttime closures may be required for construction activities along State Street.

CRA is acting on behalf of HNTB Corporation (HNTB), who is under contract with INDOT to advance the environmental documentation for the referenced project.

In accordance with 36 CFR 800.2 (c), you were invited to become a consulting party as part of the Section 106 process, or you are hereby invited to become a consulting party as part of the Section 106 process. Entities that have previously accepted consulting party status are identified in the attached list.

The Section 106 process involves efforts to identify historic properties potentially affected by the undertaking, to assess the undertaking's effects and to seek ways to avoid, minimize, or mitigate any adverse effects on historic properties. For more information regarding the protection of historic resources, please see the Advisory Council on Historic Preservation's guide: *Protecting Historic Properties: A Citizen's Guide to Section 106 Review* available online at <https://www.achp.gov/sites/default/files/documents/2017-01/CitizenGuide.pdf>.

The Area of Potential Effects (APE) is the area in which the proposed project may cause alterations in the character or use of historic resources. The APE contains no resources listed in the National Register of Historic Places (NRHP).

A historian who meets the Secretary of the Interior's Professional Qualification Standards identified and evaluated above-ground resources within the APE for potential eligibility for the NRHP. As a result of the historic property identification and evaluation efforts, four above-ground resources are recommended as eligible for listing in the NRHP, the Frank and George Devol Double House (IHSSI No. 043-446-34246; "outstanding"), Horatio Devol House (IHSSI No. 043-446-34245; "outstanding"), James Carr House (IHSSI No. 043-446-34202; "outstanding"), and the Reyse (Roy[s]ce)-Friend House (IHSSI No. 043-446-34204; "outstanding").

An archaeologist who meets the Secretary of the Interior's Professional Qualification Standards conducted a phase Ia archaeological survey for the project. Three previously unrecorded archaeological sites (12FL222–12FL224) were found during the survey. Site 12FL222 is an urban historic site, representing at least two historic structures, one of which was an African-American school that operated from 1875 to 1907. Site 12FL223 is a mid-nineteenth- to early twentieth-century farmstead associated with non-extant structures. Site 12FL224 is a historic scatter that dates from the late nineteenth to the twentieth century. Due to their inability to convey significant information about the history of the area, Sites 12FL223 and 12FL224 are both recommended as ineligible for inclusion on the NRHP and no further work is recommended for them. However, the NRHP eligibility of Site 12FL222 could not be assessed with the data from the phase Ia survey and the site may contain intact deposits that could provide important information about the history of New Albany. Therefore, project avoidance or further work to assess its integrity and NRHP eligibility is recommended for Site 12FL222.

On June 25, 2021, SHPO staff responded to the early coordination letter. They recommended to invite property owners of historic properties if right-of-way will be acquired from a potentially historic property. Although no right-of-way acquisition is anticipated near the Frank and George Devol Double House, the Horatio Devol House, the James Carr House, and the Reyse (Roy[s]ce)-Friend House, the owners of these properties have been added to the list of invited consulting parties so that they are aware of the proposed project.

On July 12, 2021, the City of New Albany stated they would like to be a consulting party in response to the environmental early coordination letter, distributed by HNTB. The City listed their concerns about resources that were not previously surveyed including post-World War II residences and a housing project along Valley View Court that housed victims of the 1937 flood. Additionally, they mentioned the West Haven Cemetery, an African American public cemetery. Post World War II residences were surveyed within the APE and were evaluated in the Historic Property Report (HPR) individually and as historic districts. The West Haven Cemetery was also evaluated in the HPR. CRA recommended that these resources were ineligible for individual and district listing in the NRHP. The residences along Valley View Court are located outside of the APE and will not be affected by the proposed project. Other concerns were identified such as flooding along Valley View Creek and Falling Run Creek and the request for a noise study along I-64 in New Albany. These items are being addressed during the design and environmental review process for the project.

No further responses were received regarding the HPR.

The Historic Property Report and the Phase Ia archaeology report (Tribes only) are available for review in IN SCOPE at <http://erms.indot.in.gov/Section106Documents/> (the Des. No. is the most efficient search term, once in IN SCOPE). You are invited to review these documents and to respond with comments on any historic resource impacts incurred as a result of this project so that an environmental report can be completed. We also welcome your related opinions and other input to be considered in the preparation of the environmental document. If you prefer a hard-copy of this material, please respond to this email with your request as soon as possible.

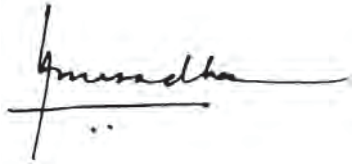
Please review the information and comment within thirty (30) calendar days of receipt. If you indicate that you do not desire to be a consulting party or if you have not previously accepted consulting party status and you do not respond to this letter, you will not be included on the list of consulting parties for this project and will not receive further information about the project unless the design changes. Tribal consulting parties may enter the process at any time and are encouraged to respond to this notification with any comments or concerns at their earliest convenience.

For questions concerning specific project details, you may contact Alyssa Reynolds of Cultural Resource Analysts, Inc. at (812) 253-3009 or [adreynolds@crai-ky.com](mailto:adreynolds@crai-ky.com). All future responses regarding the proposed project should be forwarded to CRA at the following address:

Alyssa Reynolds  
Architectural Historian  
Cultural Resource Analysts, Inc. (CRA)  
201 NW 4<sup>th</sup> Street, Suite 204  
Evansville, Indiana 47708  
[adreynolds@crai-ky.com](mailto:adreynolds@crai-ky.com)

Tribal contacts may contact Shaun Miller at [smiller@indot.in.gov](mailto:smiller@indot.in.gov) or 317-416-0876 or Kari-Carmany-George at FHWA at [K.CarmanyGeorge@dot.gov](mailto:K.CarmanyGeorge@dot.gov) or 317-226-5629.

Sincerely,

A handwritten signature in black ink, appearing to read "Anuradha", written over a horizontal line. There are two small dots below the line.

Anuradha V. Kumar, Manager  
Cultural Resources Office  
Environmental Services

USGS Topographic map, Aerial View map, Consulting Party Distribution list, and Consulting Party response letters

## **Consulting Party Acceptance List**

**Indiana Department of Natural Resources, Division of Historic Preservation & Archaeology,  
Indiana State Historic Preservation Office (SHPO)**

**City of New Albany**

## **Recently Invited Consulting Parties List**

**Amber Marie Ellnor & Gerald D. Kelly (owner of Horatio Devol House)**

225 Lafayette Street  
New Albany, Indiana 47150

**Hillo Holding, LLC (owner of the Reyse-(Roys[c]e) Friend House)**

229 W Spring Street  
New Albany, Indiana 47150

**Presley-Bell Enterprises, LLC (owner of James Carr House)**

217 W Spring Street  
New Albany, Indiana 47150

**Kathryn Lee Tilton & Aaron Fegenbush (owner of Frank & George Devol Double House)**

110 Pensive Road  
Clarksville, Indiana 47129

**\*Responses to the ECL have been removed to avoid duplication.**

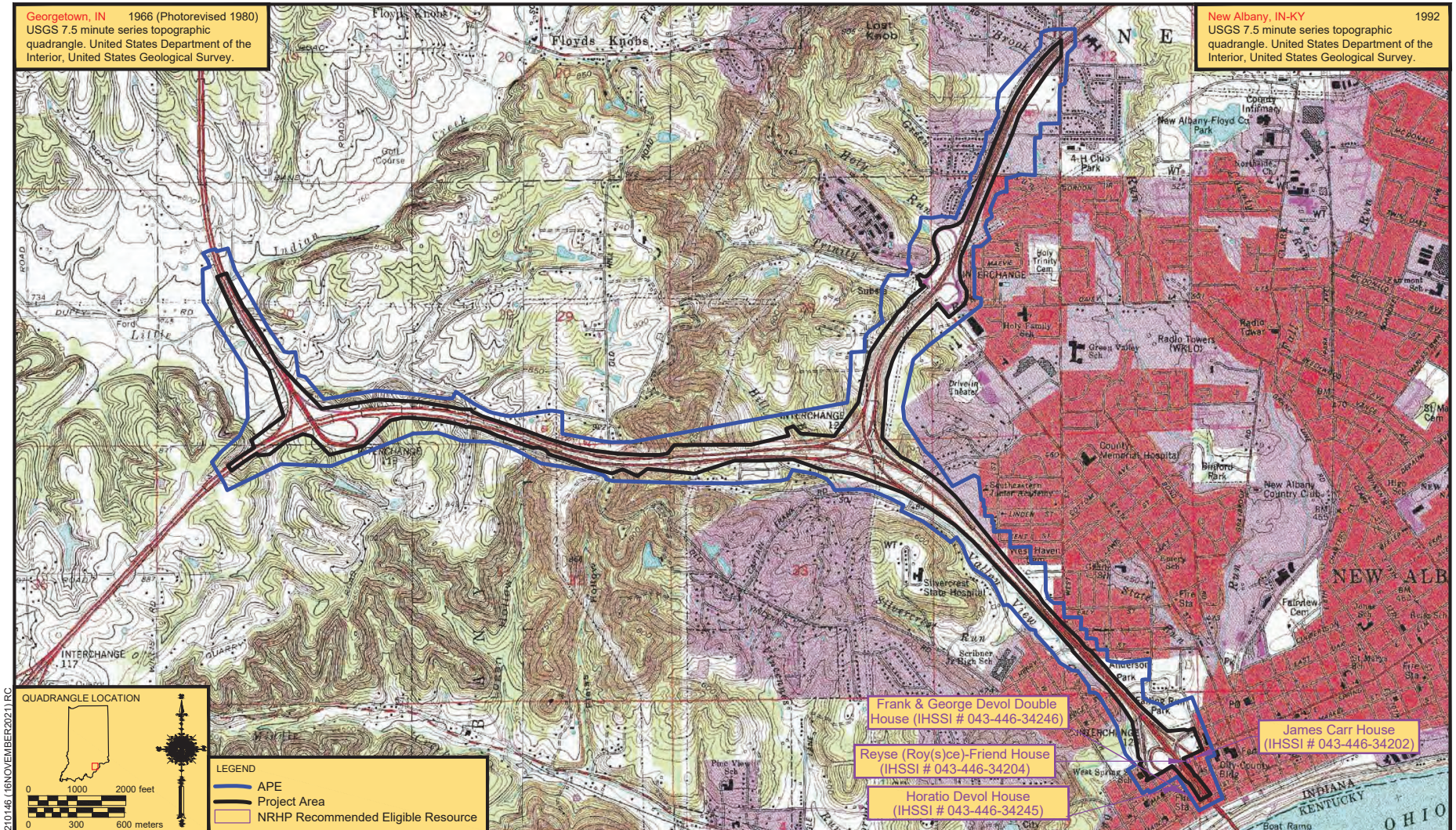


Figure 1. Topographic quadrangle showing the location of the project area, APE, and recommended eligible NRHP resources.

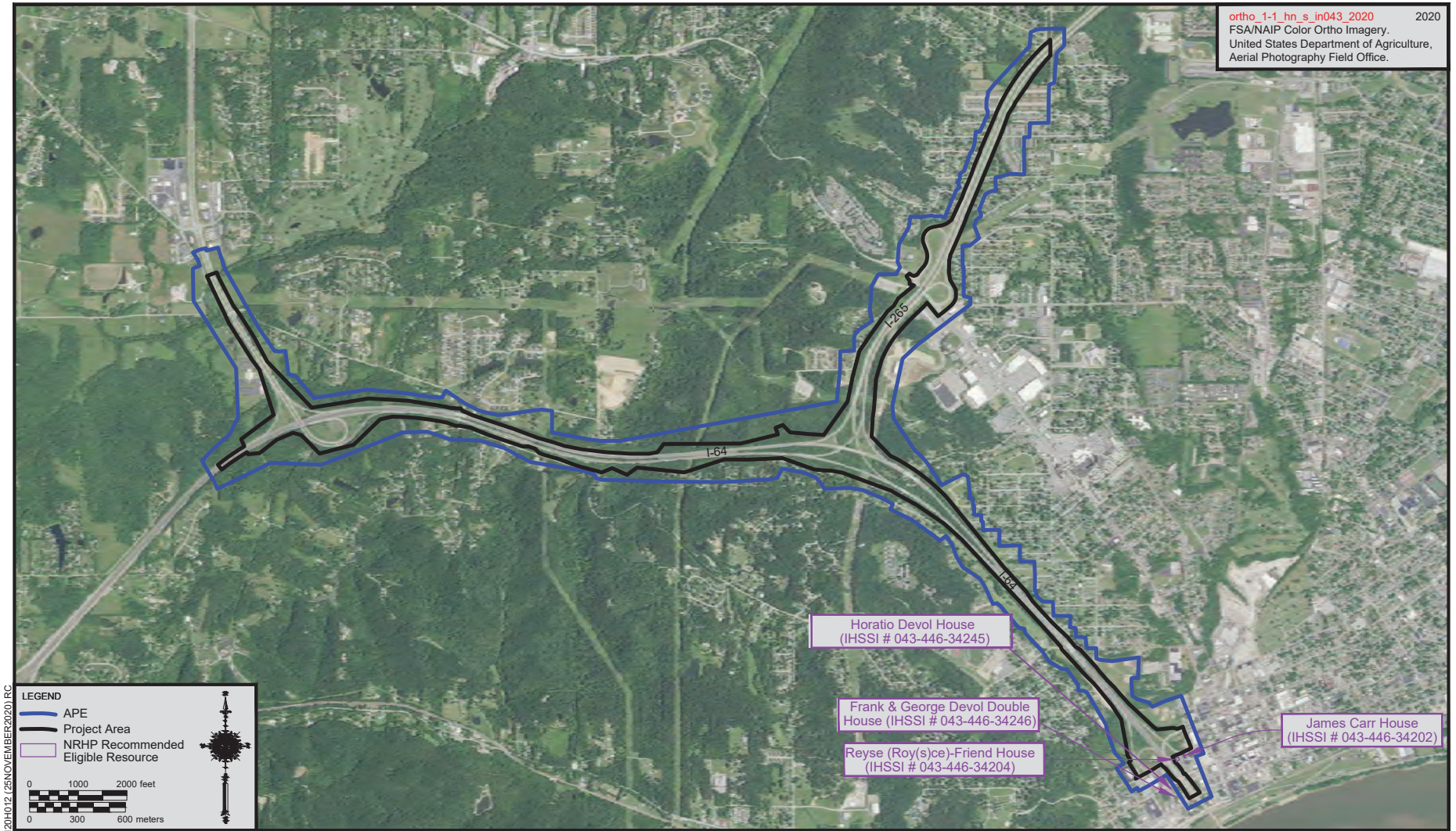


Figure 2. Aerial map showing the location of the project area, APE, and recommended eligible NRHP resources.

## Alyssa Reynolds

---

**From:** Alyssa Reynolds <adreynolds@crai-ky.com>  
**Sent:** Monday, January 10, 2022 2:06 PM  
**To:** swood@cityofnewalbany.com  
**Cc:** 'Carpenter, Patrick A'; 'Korzeniewski, Patricia J'; 'Miller, Shaun (INDOT)'; 'Branigin, Susan'; Andrew Martin; Robert Ball; kgillette@hntb.com; 'Prince, Greg'; 'Dan Thatcher'  
**Subject:** FHWA Project: Des. No. 1900162; DHPA No 27559; HPR; Improve 64: I-64 Added Travel Lanes, Floyd County, Indiana  
**Attachments:** I-64 Added Travel Lanes\_Des 1900162\_RDL\_2022\_1\_10.pdf

Mr. Wood

**Des. No.: 1900162**

**Project Description:** I-64 added travel lanes project from US 150 to Main Street

**Location:** Georgetown, Lafayette, & New Albany Townships, Floyd County, Indiana

The Indiana Department of Transportation, with funding from the Federal Highway Administration, proposes to proceed with the Improve 64: I-64 added travel lanes project; Des No 1900162.

The Section 106 Early Coordination Letter for this project was originally distributed on May 27, 2021.

As part of Section 106 of the National Historic Preservation Act, a Historic Property Report and Archaeology Report (Tribes only) have been prepared and are ready for review and comment by consulting parties.

Please review this documentation located in IN SCOPE at

<http://erms.indot.in.gov/Section106Documents/> (the Des. No. is the most efficient search term, once in IN SCOPE), and respond with any comments that you may have. If a hard copy of the materials is needed, please respond to this email with your request as soon as you can.

Consulting parties have thirty (30) calendar days from receipt of this information to review and provide comment. Tribal consulting parties may enter the process at any time and are encouraged to respond to this notification with any comments or concerns at their earliest convenience. Tribal contacts may contact Shaun Miller at [smiller@indot.in.gov](mailto:smiller@indot.in.gov) or 317-416-0876 or Kari-Carmany-George at FHWA at [K.CarmanyGeorge@dot.gov](mailto:K.CarmanyGeorge@dot.gov) or 317-226-5629.

Thank you in advance for your input,

**Alyssa Reynolds**

Architectural Historian  
adreynolds@crai-ky.com

Indiana Office  
201 NW 4th Street, Suite 204  
Evansville, Indiana 47708  
812.253.3009 office  
812.253.3010 fax  
812.549.4503 cell  
<http://www.crai-ky.com>



***Celebrating 38 Years in Business!***



## Alyssa Reynolds

---

**From:** Alyssa Reynolds <adreynolds@crai-ky.com>  
**Sent:** Monday, January 10, 2022 2:03 PM  
**To:** dhpareview  
**Cc:** 'Carpenter, Patrick A'; 'Korzeniewski, Patricia J'; 'Miller, Shaun (INDOT)'; 'Branigin, Susan'; Andrew Martin; Robert Ball; kgillette@hntb.com; 'Prince, Greg'; 'Dan Thatcher'; 'Sharkey, Rachel'; 'Slider, Chad (DNR)'  
**Subject:** FHWA Project: Des. No. 1900162; DHPA No 27559; HPR; Improve 64: I-64 Added Travel Lanes, Floyd County, Indiana  
**Attachments:** I-64 Added Travel Lanes\_Des 1900162\_RDL\_2022\_1\_10.pdf; I-64\_Added Travel Lanes\_Des 1900162\_DHPA form\_2022\_1\_10.pdf; I-64\_Improvements\_Des 1900162\_Phase1a\_2022\_1\_10.pdf

Hello,

Hard copies of the attached documents will also be mailed to you by the end of the week. A follow-up email will be sent containing the HPR.

**Des. No.: 1900162**

**Project Description:** I-64 added travel lanes project from US 150 to Main Street

**Location:** Georgetown, Lafayette, & New Albany Townships, Floyd County, Indiana

The Indiana Department of Transportation, with funding from the Federal Highway Administration, proposes to proceed with the Improve 64: I-64 added travel lanes project; Des No 1900162.

The Section 106 Early Coordination Letter for this project was originally distributed on May 27, 2021.

As part of Section 106 of the National Historic Preservation Act, a Historic Property Report and Archaeology Report (Tribes only) have been prepared and are ready for review and comment by consulting parties.

Please review this documentation located in IN SCOPE at

<http://erms.indot.in.gov/Section106Documents/> (the Des. No. is the most efficient search term, once in IN SCOPE), and respond with any comments that you may have. If a hard copy of the materials is needed, please respond to this email with your request as soon as you can.

Consulting parties have thirty (30) calendar days from receipt of this information to review and provide comment. Tribal consulting parties may enter the process at any time and are encouraged to respond to this notification with any comments or concerns at their earliest convenience. Tribal contacts may contact Shaun Miller at [smiller@indot.in.gov](mailto:smiller@indot.in.gov) or 317-416-0876 or Kari-Carmany-George at FHWA at [K.CarmanyGeorge@dot.gov](mailto:K.CarmanyGeorge@dot.gov) or 317-226-5629.

Thank you in advance for your input,

**Alyssa Reynolds**

Architectural Historian  
adreynolds@crai-ky.com

Indiana Office  
201 NW 4th Street, Suite 204  
Evansville, Indiana 47708

812.253.3009 office  
812.253.3010 fax  
812.549.4503 cell  
<http://www.crai-ky.com>



***Celebrating 38 Years in Business!***

## Alyssa Reynolds

---

**From:** Korzeniewski, Patricia J <PKorzeniewski@indot.IN.gov>  
**Sent:** Monday, January 10, 2022 2:33 PM  
**To:** thpo@estoo.net; Diane Hunter; cechohawk@peoriatribe.com;  
Matthew.Bussler@pokagonband-nsn.gov; tonya@shawnee-tribe.com;  
lheady@delawaretribe.org; egorsuch@ukb-nsn.gov  
**Cc:** Miller, Shaun (INDOT); Korzeniewski, Patricia J; Alyssa Reynolds; Carmany-George, Karstin (FHWA); Carpenter, Patrick A  
**Subject:** FHWA Project: Des. No. 1900162; DHPA No 27559; HPR; Improve 64: I-64 Added Travel Lanes, Floyd County, Indiana  
**Attachments:** I-64 Added Travel Lanes\_Des 1900162\_RDL\_2022\_1\_10.pdf

**Des. No.: 1900162**

**Project Description:** I-64 added travel lanes project from US 150 to Main Street

**Location:** Georgetown, Lafayette, & New Albany Townships, Floyd County, Indiana

The Indiana Department of Transportation, with funding from the Federal Highway Administration, proposes to proceed with the Improve 64: I-64 added travel lanes project; Des No 1900162.

The Section 106 Early Coordination Letter for this project was originally distributed on May 27, 2021.

As part of Section 106 of the National Historic Preservation Act, a Historic Property Report and Archaeology Report (Tribes only) have been prepared and are ready for review and comment by consulting parties.

Please review this documentation located in IN SCOPE at

<http://erms.indot.in.gov/Section106Documents/> (the Des. No. is the most efficient search term, once in IN SCOPE), and respond with any comments that you may have. If a hard copy of the materials is needed, please respond to this email with your request as soon as you can.

Consulting parties have thirty (30) calendar days from receipt of this information to review and provide comment. Tribal consulting parties may enter the process at any time and are encouraged to respond to this notification with any comments or concerns at their earliest convenience. Tribal contacts may contact Shaun Miller at [smiller@indot.in.gov](mailto:smiller@indot.in.gov) or 317-416-0876 or Kari-Carmany-George at FHWA at [K.CarmanyGeorge@dot.gov](mailto:K.CarmanyGeorge@dot.gov) or 317-226-5629.

Thank you in advance for your input,

Patricia Jo Korzeniewski  
Archaeologist and Environmental Manager  
INDOT, Cultural Resources Office  
100 North Senate Avenue, N758-ES  
Indianapolis, Indiana 46204  
[PKorzeniewski@indot.in.gov](mailto:PKorzeniewski@indot.in.gov)  
1-317-416-4377  
M-F 8:00 - 4:00



**PEORIA TRIBE OF INDIANS OF OKLAHOMA**

118 S. Eight Tribes Trail (918) 540-2535 FAX (918) 540-2538

P.O. Box 1527

MIAMI, OKLAHOMA 74355

CHIEF  
Craig Harper

SECOND CHIEF  
Rosanna Dobbs

January 19, 2022

Shaun Miller  
Tribal Contact  
INDOT  
100 N Senate Ave., Rm N642  
Indianapolis, IN 46204

Re: Des. #1900162: I-64 Added Travel Lanes from US 150 to Main St., Floyd Co

Thank you for providing notice of the referenced project. The Peoria Tribe of Indians of Oklahoma is unaware of a direct link to the newly proposed project location.

The Peoria Tribe of Indians of Oklahoma is also unaware of items covered under Native American Graves Protection and Repatriation Act (NAGPRA) to be associated with the proposed project site, including funerary or sacred objects; objects of cultural patrimony; or ancestral human remains.

The Peoria Tribe has no objection at this time to the proposed project. If, however, at any time items are discovered which fall under the protection of NAGPRA, the Peoria Tribe requests immediate notification and consultation. In addition, state, local and tribal authorities should be advised as to the findings and construction halted until consultation with all concerned parties has occurred.

Please feel free to contact me directly at the number above if additional consultation is necessary. Thank you again for your consideration with this matter.

Sincerely,

Charla K. EchoHawk  
Director of Cultural Preservation

TREASURER  
Hank Downum

SECRETARY  
Tonya Mathews

FIRST COUNCILMAN  
Carolyn Ritchey

SECOND COUNCILMAN  
Kara North

THIRD COUNCILMAN  
Isabella Burrell



**EASTERN SHAWNEE  
CULTURAL PRESERVATION DEPARTMENT**

70500 East 128 Road, Wyandotte, OK 74370

January 21, 2022

INDOT - Indiana Department of Transportation  
100 N. Senate Ave. IGCN642  
Indianapolis, IN 46201

**RE: Des No. 1900162; DHPA No. 27559, Floyd County, Indiana**

Dear Ms. Korzeniewski,

The Eastern Shawnee Tribe has received your letter regarding the above referenced project(s) within Floyd County, Indiana. The Eastern Shawnee Tribe is committed to protecting sites important to Tribal Heritage, Culture and Religion. Furthermore, the Tribe is particularly concerned with historical sites that may contain but not limited to the burial(s) of human remains and associated funerary objects.

As described in your correspondence, and upon research of our database(s) and files, we find our people occupied these areas historically and/or prehistorically. However, the project proposes **NO Adverse Effect** or endangerment to known sites of interest to the Eastern Shawnee Tribe. Please continue project as planned. However, should this project inadvertently discover an archeological site or object(s) we request that you immediately contact the Eastern Shawnee Tribe, as well as the appropriate state agencies (within 24 hours). We also ask that all ground disturbing activity stop until the Tribe and State agencies are consulted. Please note that any future changes to this project will require additional consultation.

In accordance with the NHPA of 1966 (16 U.S.C. § 470-470w-6), federally funded, licensed, or permitted undertakings that are subject to the Section 106 review process must determine effects to significant historic properties. As clarified in Section 101(d)(6)(A-B), historic properties may have religious and/or cultural significance to Indian Tribes. Section 106 of NHPA requires Federal agencies to consider the effects of their actions on all significant historic properties (36 CFR Part 800) as does the National Environmental Policy Act of 1969 (43 U.S.C. § 4321-4347 and 40 CFR § 1501.7(a)). This letter evidences NHPA and NEPA historic properties compliance pertaining to consultation with this Tribe regarding the referenced proposed projects.

Thank you, for contacting the Eastern Shawnee Tribe, we appreciate your cooperation. Should you have any further questions or comments please contact our Office.

Sincerely,

Paul Barton, Tribal Historic Preservation Officer (THPO)  
Eastern Shawnee Tribe of Oklahoma  
(918) 666-5151 Ext:1833

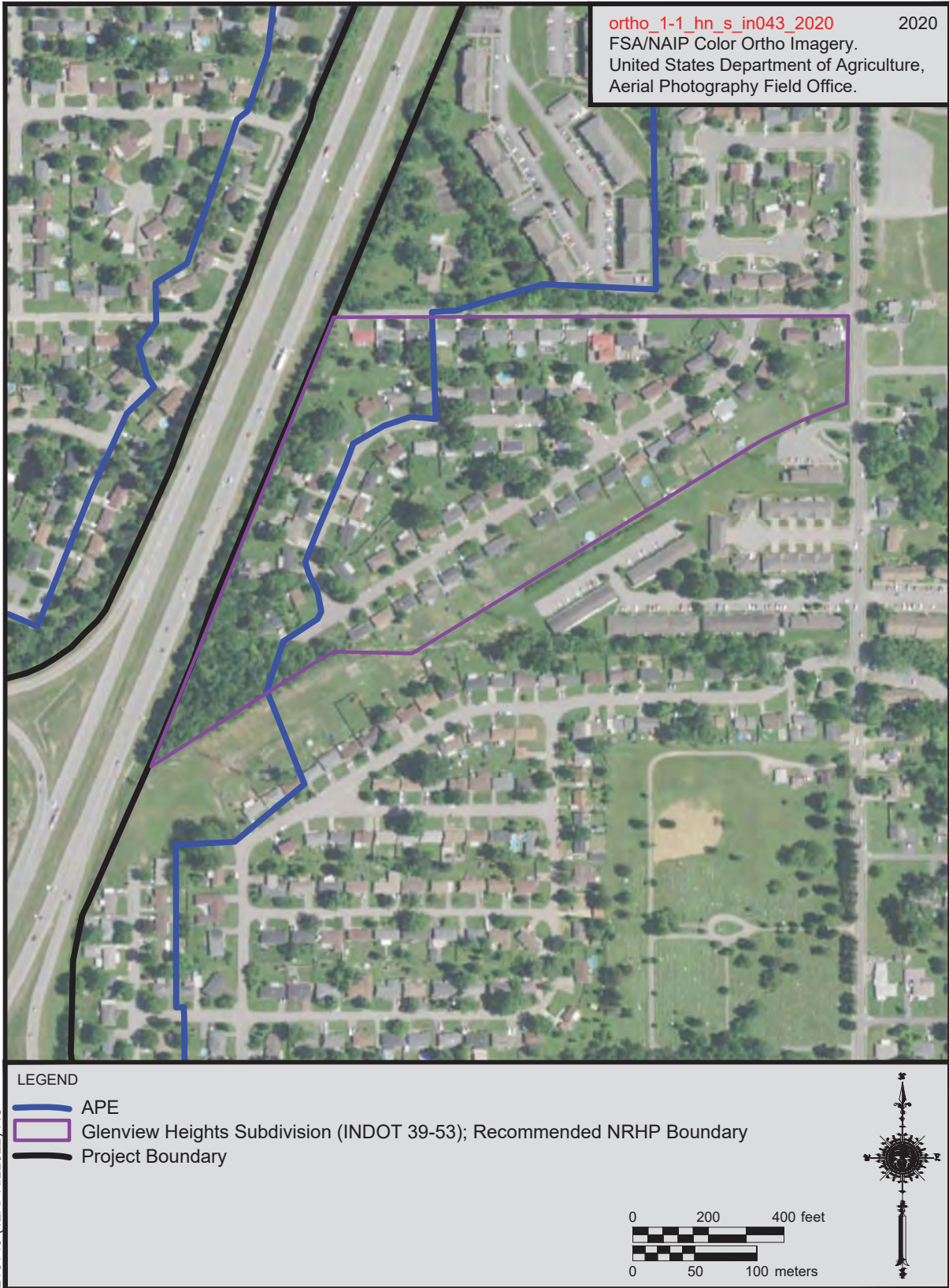


Figure 3. Recommended NRHP boundary for the Glenview Heights Subdivision.



February 9, 2022

Alyssa Reynolds  
CRA, Inc.  
201 NW 4<sup>th</sup> Street, Suite 204  
Evansville, Indiana 47648

Federal Agency: Indiana Department of Transportation (“INDOT”),  
on behalf of Federal Highway Administration, Indiana Division (“FHWA”)

Re: Phase Ia archaeological reconnaissance report (Travis, 1/5/2022) and Historic Property Report  
(Reynolds, 12/22/21) for added travel lanes along I-64 and I-265 (Des. No. 1900162; DHPA No. 27559)

Dear Ms. Reynolds:

Pursuant to Section 106 of the National Historic Preservation Act of 1966, as amended (54 U.S.C. § 306108), 36 C.F.R. Part 800, and the “Programmatic Agreement (PA) Among the Federal Highway Administration, the Indiana Department of Transportation, the Advisory Council on Historic Preservation and the Indiana State Historic Preservation Officer Regarding the Implementation of the Federal Aid Highway Program In the State of Indiana,” the staff of the Indiana State Historic Preservation Officer (“Indiana SHPO”) has reviewed your January 10, 2022, submission which enclosed the Phase Ia archaeological reconnaissance report (Travis, 1/5/2022) and historic property report (“HPR”, Reynolds, 12/22/21) received by our office the same day and on January 20, 2022, for this project in New Albany, Floyd County, Indiana.

The area of potential effects (“APE”) proposed in the HPR appears to be of adequate size to encompass the geographic area in which direct and indirect effects of a project of this nature could occur.

For the purposes of the Section 106 review of this federal undertaking, we agree with the conclusions of the HPR that the following above ground properties within the area of potential effects are eligible for inclusion in the National Register of Historic Places: Frank and George Devol Double House at 219-221 Lafayette Street (IHSSI # 043-446-34246), the Horatio Devol House at 225 Lafayette Street (IHSSI # 043-446-34245), the Reyse (Roy[s]ce-Friend House) at 229 W. Spring Street (IHSSI # 043-446-34204), and the James Carr House at 217 W. Spring Street (IHSSI #043-446-34202).

Regarding the other resources identified within the area of potential effects, we noted that the report has only a few photos of each area that was evaluated. For example, the Finchland area is covered by four photos, one of which mostly shows a paved street. There seemed to be a boiler-plate approach to the evaluation, repeating what we would view as misconceptions about housing stock of the 1940-1973 period: a tendency to discount local significance and a tendency to believe that only exceptionally significant neighborhoods can qualify under the Residential Planning & Development MPDF. The lack of mapping for each area made evaluation more difficult. Specific comments for each of the subdivisions are offered below:

#### West End Historic District

Despite less information and analysis than we would have desired, after reviewing the area, we continue to believe that a portion of it is still eligible for inclusion in the National Register. The boundaries have likely changed somewhat since it was initially surveyed, but we believe that there is still a locally significant collection of 19th and early 20th century vernacular housing and architecture in the area. In the future, please include a heading for each evaluation, in order to direct DHPA staff to the pertinent information.

#### Finchland Neighborhood

We believe that the analysis of this area is incorrect. In our view, Finchland is not completely a Custom development. Finchland has elements of Transitional, Tract and Custom developments. Its grid-like layout is not an extension of the city grid per se, but it certainly emulates the nearby city grid (a Transitional element), while its housing is too individualized to be tract housing, builders in the area certainly used a few basic plans. The fact that a woman planned this area is unusual and might be a significant factor that should be further explored. The scale, type of housing, and degree of integrity of the housing is consistent with the “windshield survey” examples for the Fall of the Ohio region that we have already found eligible. We believe Finchland neighborhood meets Criterion A, and further investigation might reveal if it meets Criterion B for its association to its namesake, Violet Finch.

#### Glenview Heights Neighborhood

We believe that this tightly-knit area of ranch houses is a Custom neighborhood. Despite the neighborhood being described as “gridded” and having multiple access points, it appears to us that the area has a carefully planned triangular layout, with only one point of access. The housing stock derives from variations on a few basic ranch house floor plans and elevations. There is sufficient variation in form to describe the housing as “entry-level Custom” housing. The housing stock is very similar in scale, materials, and design to the districts we have identified as eligible in the “windshield survey” for the Falls of the Ohio region. We believe this area meets Criterion A.

#### Oakwood Hills Neighborhood

We concur that this area has too many non-contributing houses to be eligible, although the houses are non-contributing due to age alone and its plan is noteworthy for its use of local terrain. We note that several houses, however, are architecturally notable (specifically the two photographed on page 33). Houses of that stature should be individually evaluated against the MPDF (which has provisions for individual houses or apartments). Since there are so few images, we cannot know how many other architecturally notable houses there are in Oakwood.

#### Village Pines Neighborhood

Since Village Pines falls just outside of the parameters of the MPDF, it should not have been evaluated using the MPDF. Instead, the area should have been evaluated against the NR criteria independently. We don’t have enough information to do that as it stands now. A more complete history of the community and its development would help us determine if it might be eligible.

Excepting the sites and neighborhoods discussed above, we agree with the conclusions of the historic property report regarding the evaluation of eligibility or ineligibility of properties for the National Register of Historic Places within the area of potential effects.

In terms of archaeological resources, thank you for the submission of the archaeological reconnaissance report (Travis, 1/5/2022). A review of the report indicates three archaeological sites (12FL222, 12FL223, and 12FL224) were identified as a result of the reconnaissance survey. 12FL223 and 12FL224 are historical artifact scatters that do not appear to be eligible for inclusion in the NRHP and no further work is necessary at these sites. 12FL222 has been recorded as the former location of a historical African-American school. The NRHP eligibility of the site could not be assessed by the current reconnaissance survey due to the depth of the depositional context of the site. Therefore, we concur with the recommendation that the site should be avoided by construction activities. If avoidance is not possible, additional archaeological investigation at 12FL222 will be necessary.

It is our understanding that no project-related ground-disturbing activities are proposed for areas that lie within the boundaries of Westhaven Cemetery (CR-22-121). The aforementioned cemetery must be avoided by all ground-disturbing project-related activities (e.g., demolition, construction, grading, dredging, and/or filling, tree clearance, vehicle or equipment staging, materials stockpiling, temporary land use, etc.), and provisions of relevant state statutes regarding cemeteries (including IC 14-21-1 and IC 23-14) must be adhered to. It is also our understanding the Lewis Cemetery (CR-22-98) has been recorded as being within the same section as a portion of the proposed project, but its exact location is unknown. No evidence of the cemetery was identified during the field reconnaissance and it is not anticipated the cemetery will be impacted by current project activities.

If any prehistoric or historic archaeological artifacts or human remains are uncovered during construction, demolition, or earthmoving activities, state law (Indiana Code 14-21-1-27 and -29) requires that the discovery be reported to the Indiana SHPO within two (2) business days. In that event, please call (317) 232-1646. Be advised that adherence to Indiana Code 14-21-1-27 and -29 does not obviate the need to adhere to applicable federal statutes and regulations, including but not limited to 36 C.F.R. Part 800.

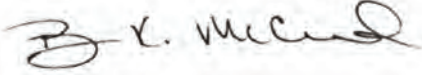
The Indiana SHPO staff’s archaeological reviewer for this project is Rachel Sharkey, the structures reviewer is Chad Slider, and input on National Register eligibility was provided by Paul Diebold. However, if you have a question about the Section 106 process, please contact initially the INDOT Cultural Resources staff members who are assigned to this project.



Reynolds  
February 9, 2022  
Page 3

In all future correspondence about the added travel lanes along I-64 and I-265 in Floyd County (Des. No. 1900162), please refer to DHPA No. 27559.

Very truly yours,



Beth K. McCord  
Deputy State Historic Preservation Officer

BKM:RAS:CWS:cws

emc: Erica Tait, FHWA  
Anuradha Kumar, INDOT  
Shaun Miller, INDOT  
Susan Branigin, INDOT  
Alyssa Reynolds, Cultural Resource Analysts  
Scott Wood, City of New Albany  
Rachel Sharkey, DNR-DHPA  
Chad Slider, DNR-DHPA  
Paul Diebold, DNR-DHPA



# INDIANA DEPARTMENT OF TRANSPORTATION

100 North Senate Avenue  
Room N758-ES  
Indianapolis, Indiana 46204

PHONE: (855) 463-6848

**Eric Holcomb, Governor**  
**Michael Smith, Commissioner**

May 9, 2022

This letter was sent to the listed parties.

RE: FHWA Project: Des No 1900162; Improve 64 Project; I-64 Added Travel Lanes from US 150 to Main Street, Floyd County, Indiana

Dear Consulting Party (see attached list),

The Indiana Department of Transportation (INDOT), with funding from the Federal Highway Administration (FHWA), proposes to proceed with the Improve 64 project along I-64 and I-265 (Des. No. 1900162) in Floyd County. Cultural Resource Analysts, Inc. (CRA) is under contract with INDOT to advance the environmental documentation for the referenced project.

This letter is part of the Section 106 review process for this project. Section 106 of the National Historic Preservation Act requires federal agencies to take into account the effects of their undertakings on historic and archaeological properties. We are requesting comments from you regarding the possible effects of this project. Please use the above Des. Number and project description in your reply and your comments will be incorporated into the formal environmental study. This study will be conducted in accordance with the National Environmental Policy Act (NEPA). **INDOT and FHWA have not yet determined the NEPA class of action for the project (i.e., Categorical Exclusion, Environmental Assessment, or Environmental Impact Statement).** This determination will be made once more details about the proposed action are defined.

A Section 106 early coordination letter was distributed on May 27, 2021.

The proposed undertaking is located along I-64 and I-265 in Floyd County, Indiana. A portion of the project is located in the City of New Albany. It is within Georgetown, Lafayette, and New Albany Townships, as shown on the Georgetown, Indiana and New Albany, Indiana USGS Topographic Quadrangles, in Sections 22, 27, 28, 29, 30, 31, 32, 33, and 34 in Township 2 South and Range 6 East, and Sections 2 and 3 in Township 3 South and Range 6 East.

The need for the project is due to existing traffic congestion as demonstrated by poor levels of service (LOS) on the interstate and interchange components within the project area. The purpose of the project is to reduce congestion and improve the LOS on the interstate and interchange components.

The project will include work on sections of I-64, I-265, and US 150. The proposed project limits will extend northwest along I-64 from approximately 22,334 feet (4.23 mi) from the I-64 bridge over Main Street in New Albany to the US 150 interchange and along I-265 for approximately 9,240 feet (1.75 mi) north-northeast to approximately the Green Valley Road overpass. The project area has increased from the previous 3.9 mile-long project area along the I-64 corridor to accommodate road resurfacing along I-64, south of Spring Street to Main Street.

[www.in.gov/dot/](http://www.in.gov/dot/)  
**An Equal Opportunity Employer**



Minimal right-of-way (ROW) acquisition may be required. At this time, the exact amount of ROW has not been determined. As the project continues to develop, design changes have occurred since the release of the early coordination letter on May 27, 2021. Currently, the project is anticipated to include the following elements:

- Addition of a travel lane in each direction on I-64 from US 150 to 2,000 feet north of Cherry Street. In most areas, the additional lanes will be added to the median where rock excavation will be necessary.
- Addition of an auxiliary lane on eastbound I-265 from I-64 to State Street and a travel lane on eastbound I-265 from I-64 to 4,000 feet east of State Street. The auxiliary lane will be added on the outside and the travel lane added within the median.
- Addition of one lane to all I-64/I-265 interchange ramps and one lane on the I-64 westbound exit ramp to US 150.
- Replacement and/or rehabilitation of pavement on I-64, I-265, and US 150.
- Relocation of the eastbound I-64 to eastbound I-265 ramp within the I-64/I-265 interchange. Construction of a new bridge on eastbound I-64 is required to accommodate the ramp relocation.
- Replacement, widening, and deck rehabilitation of bridges throughout the project area.
- Replacement of culverts and storm sewers, and construction of detention basins
- Installation of guardrail and concrete barrier wall as needed along I-64.
- Replacement and addition of signage, lighting, ITS conduit, and pavement markings.
- Above-ground and underground utility relocations.
- Acquisition of new right-of-way and building demolition for any relocations.
- Construction of retaining walls at multiple locations to minimize right-of-way acquisition and to accommodate new traffic lanes added within the narrowed median along I-64 between US 150 and I-265.
- A noise analysis will be completed for the project. As part of this analysis, possible noise barriers could be identified and analyzed to determine if they are reasonable and feasible in accordance with INDOT's Traffic Noise Analysis Procedure (2017).

The maintenance of traffic plan is anticipated to keep the existing number of lanes of traffic in each direction (two to three depending on location) throughout the majority of construction. Although, intermittent lane restrictions will be implemented on I-64 and I-265. It is also anticipated that Quarry Road, Captain Frank Road, and Cherry Street will be closed for periods during construction of the bridges above, and construction of foundations adjacent to, those roadways. Nighttime closures may be required for construction activities along State Street.

CRA is acting on behalf of HNTB Corporation (HNTB), who is under contract with INDOT to advance the environmental documentation for the referenced project.

A Historic Property Report (HPR) an archaeology report, and report distribution letter were distributed to consulting parties on January 10, 2022.

With regard to archaeological resources, an archaeologist who meets the Secretary of the Interior's Professional Qualification Standards identified three sites within the project area. As a result of these efforts, sites (12FL223—12FL224) were recommended not eligible for listing in the NRHP and no further work is recommended. However, the National Register of Historic Places eligibility of Site 12FL222 could not be

assessed with the data derived from the phase Ia and the site may contain intact deposits that could provide important information about the history of New Albany. Therefore, project avoidance or further work to assess its integrity and National Register of Historic Places eligibility is recommended for Site 12FL222.

The State Historic Preservation Office (SHPO) responded to the HPR in a letter dated February 9, 2022, stating their concerns and disagreements with portions of the HPR in relation to the eligibility of the West End Historic District (IHSSI No. 043-446-08001-182), the Finchland Subdivision, the Glenview Heights Subdivision, and individual resources associated with the Oakwood Hills Subdivision (please see attached letter). The SHPO also stated that the *Residential Planning and Development in Indiana, 1940-1973* Multiple Property Documentation Form (MPDF) be used to evaluate the Village Pines Subdivision, but were in agreement that the resource was not eligible for listing in the NRHP. In response to these comments, CRA completed an addendum report in April 2022, to provide additional information about the West End Historic District (IHSSI No. 043-446-08001-182), the Finchland Subdivision, the Glenview Heights Subdivision, and individual resources associated with the Oakwood Hills Subdivision (please see attached letter) and to further assess their eligibility.

For the purposes of the proposed project and based on SHPO's comments, a CRA historian who meets the Secretary of the Interior's Professional Qualification Standards, recommends that INDOT 23, a Ranch house, (904 Braeview Drive) is eligible for listing in the National Register of Historic Places (NRHP).

Regarding SHPO's advisement that the Finchland Subdivision and the Glenview Heights Subdivision are eligible, INDOT is still not convinced of these subdivisions' significance, but agree to treat them as eligible for the purposes of moving forward on the project.

Additionally, the SHPO agreed with CRA's recommendation in the February 9, 2022, letter that the Frank and George Devol Double House (IHSSI No. 043-446-34246; "outstanding"), Horatio Devol House (IHSSI No. 043-446-34245; "outstanding"), James Carr House (IHSSI No. 043-446-34202; "outstanding"), and the Reyse (Roy[s]ce)-Friend House (IHSSI No. 043-446- 34204; "outstanding") were eligible for listing in the NRHP.

After additional research was conducted, CRA continues to recommend that the West End Historic District (IHSSI No. 043-446-08001-182) and INDOT 22 remain ineligible for listing in the NRHP. No further responses were received regarding the HPR. This additional research and analysis is located in the Addendum HPR.

On January 19, 2022, the Peoria Tribe of Indians of Oklahoma responded to the HPR and archaeology report. They stated that they have, "...no objection at this time to the proposed project. If, however, at any time items are discovered which fall under the protection of NAGPRA, the Peoria Tribe requests immediate notification and consultation. In addition, state, local and tribal authorities should be advised as to the findings and construction halted until consultation with all concerned parties has occurred."

On January 21, 2022, the Eastern Shawnee Tribe also responded to the HPR and archaeology report. They stated that, "...we find our people occupied these areas historically and/or prehistorically. However, the project proposes **NO Adverse Effect** or endangerment to known sites of interest to the Eastern Shawnee Tribe. Please continue project as planned. However, should this project inadvertently discover an archeological site or object(s) we request that you immediately contact the Eastern Shawnee Tribe, as well as the appropriate state agencies (within 24 hours). We also ask that all ground disturbing activity stop until the Tribe and State agencies are consulted. Please note that any future changes to this project will require additional consultation."

No further responses were received relating to the HPR or archaeology report.

In summary, CRA recommends a total of seven resources as eligible for listing in the NRHP for the purposes of the proposed project:

1. Finchland Subdivision;
2. Glenview Heights Subdivision;
3. INDOT 23;
4. Frank and George Devol Double House (IHSSI No. 043-446-34246; “outstanding”);
5. Horatio Devol House (IHSSI No. 043-446-34245; “outstanding”);
6. James Carr House (IHSSI No. 043-446-34202; “outstanding”); and
7. Reyse (Roy[s]ce)-Friend House (IHSSI No. 043-446- 34204; “outstanding”)

The addendum report is available for review in IN SCOPE at <http://erms.indot.in.gov/Section106Documents/> (the Des. No. is the most efficient search term, once in IN SCOPE). You are invited to review these documents and to respond with comments on any historic resource impacts incurred as a result of this project so that an environmental report can be completed. We also welcome your related opinions and other input to be considered in the preparation of the environmental document. If you prefer a hard-copy of this material, please respond to this email with your request as soon as possible.

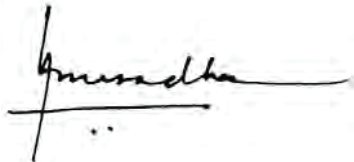
Please review the information and comment within thirty (30) calendar days of receipt. If you indicate that you do not desire to be a consulting party or if you have not previously accepted consulting party status and you do not respond to this letter, you will not be included on the list of consulting parties for this project and will not receive further information about the project unless the design changes. Tribal consulting parties may enter the process at any time and are encouraged to respond to this notification with any comments or concerns at their earliest convenience.

For questions concerning specific project details, you may contact Alyssa Reynolds of Cultural Resource Analysts, Inc. at (812) 253-3009 or [adreynolds@crai-ky.com](mailto:adreynolds@crai-ky.com). All future responses regarding the proposed project should be forwarded to CRA at the following address:

Alyssa Reynolds  
Architectural Historian  
Cultural Resource Analysts, Inc. (CRA)  
201 NW 4<sup>th</sup> Street, Suite 204  
Evansville, Indiana 47708  
[adreynolds@crai-ky.com](mailto:adreynolds@crai-ky.com)

Tribal contacts may contact Patty Jo Korzeniewski at [pkorzeniewski@indot.in.gov](mailto:pkorzeniewski@indot.in.gov) or 317-416-4377 or Kari-Carmany- George at FHWA at [K.CarmanyGeorge@dot.gov](mailto:K.CarmanyGeorge@dot.gov) or 317-226-5629.

Sincerely,



Anuradha V. Kumar, Manager  
Cultural Resources Office  
Environmental Services

Aerial View map, Consulting Party Distribution list, and Consulting Party response letters

## **Consulting Party Acceptance List**

**Indiana Department of Natural Resources, Division of Historic Preservation & Archaeology,  
Indiana State Historic Preservation Office (SHPO)**

**City of New Albany**

**Eastern Shawnee Tribe**

**Peoria Tribe of Indians of Oklahoma**

## **Recently Invited Consulting Parties List**

**Betty Lou Flock (owner of INDOT 23)  
904 Braeview Drive  
New Albany, Indiana 47150**

**\*Responses to the HPR and Phase 1a Archaeology Report have been removed to avoid duplication.**

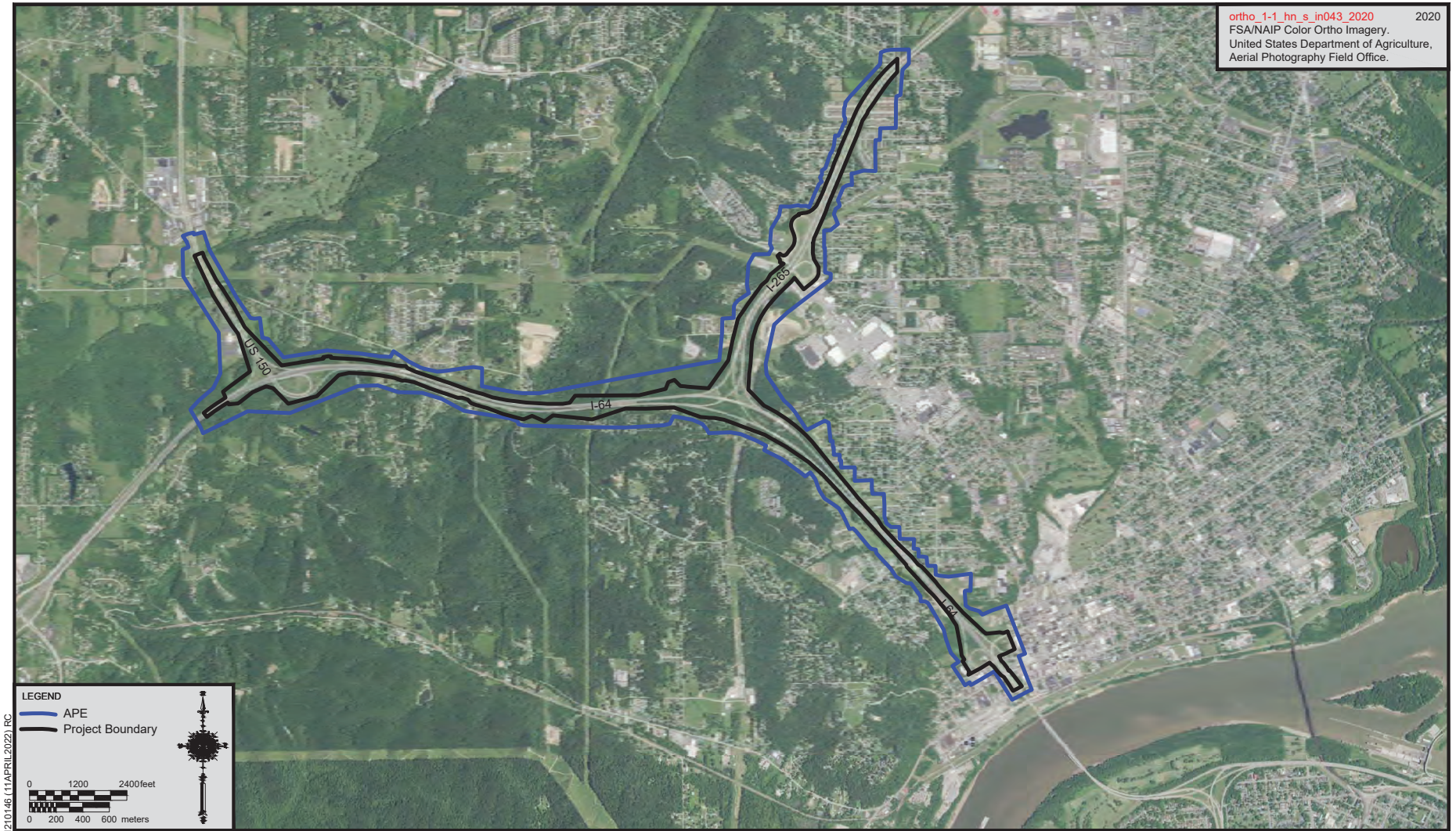


Figure 1. Aerial map showing the location of the proposed project and APE.



Figure 2. Recommended NRHP boundary for the Finchland Subdivision.



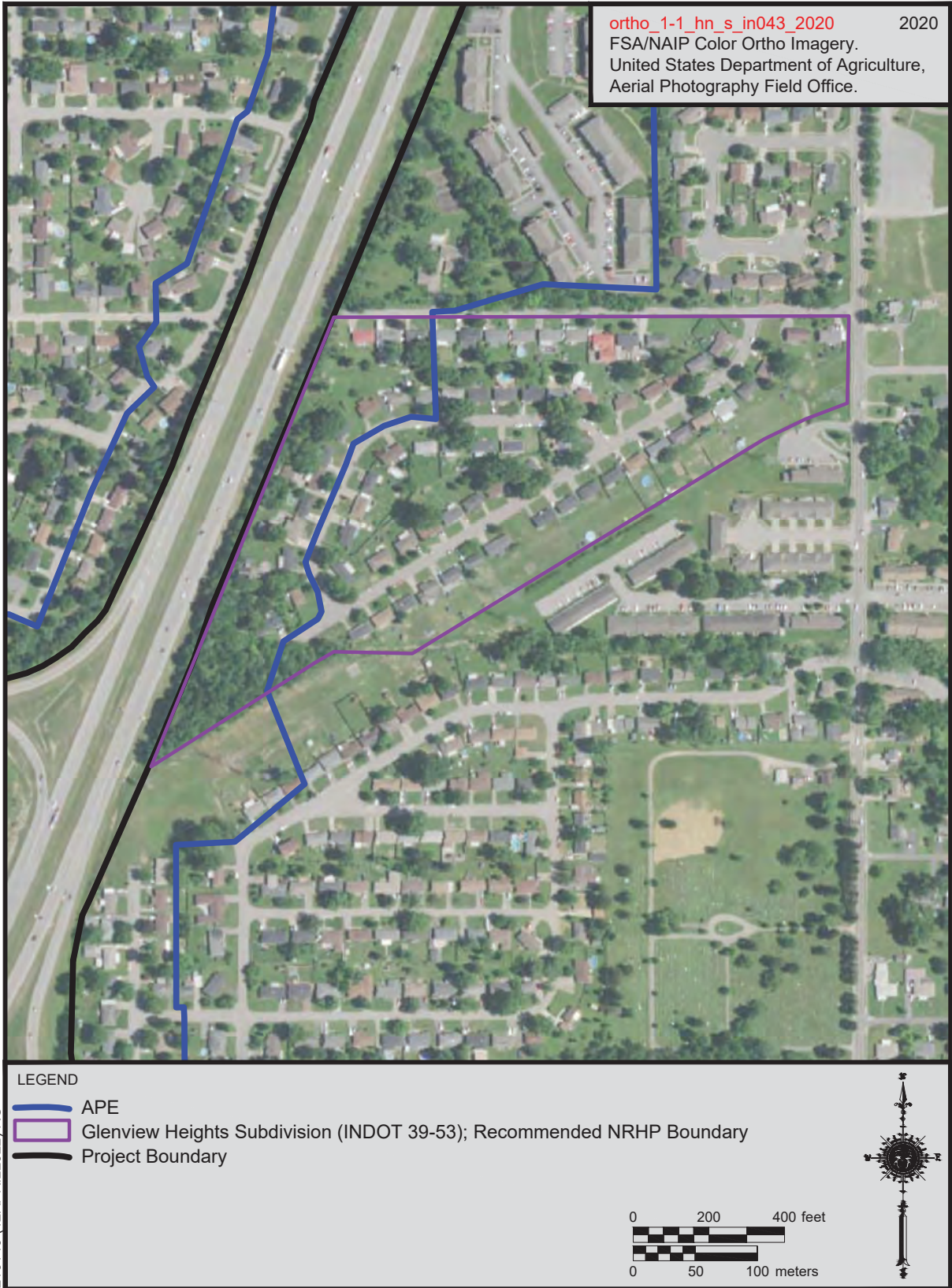


Figure 3. Recommended NRHP boundary for the Glenview Heights Subdivision.



Figure 4. Recommended NRHP boundary for INDOT 23.



Figure 5. Recommended NRHP boundary for the James Carr House (IHSSI No. 043-446-34202).



Figure 6. Recommended NRHP boundary for the Reyse (Roy[s]ce)-Friend House (IHSSI 043-446-34204).


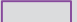
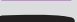


Frank & George Devol Double House  
(IHSSI # 043-446-34246)

ortho\_1-1\_hn\_s\_in043\_2020 2020  
FSA/NAIP Color Ortho Imagery.  
United States Department of Agriculture,  
Aerial Photography Field Office.

1210146 (17DECEMBER2021) RC

LEGEND

-  APE
-  NRHP Recommended Eligible Resource
-  Project Boundary

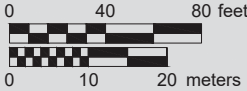


Figure 7. Recommended NRHP boundary for the Frank and George Devol Double House (IHSSI 043-446-34246).



Figure 8. Recommended NRHP boundary for the Horatio Devol House (IHSSI 043-446-34245).

## Alyssa Reynolds

---

**From:** Alyssa Reynolds <adreynolds@crai-ky.com>  
**Sent:** Monday, May 9, 2022 9:07 AM  
**To:** swood@cityofnewalbany.com  
**Cc:** 'Carpenter, Patrick A'; 'Korzeniewski, Patricia J'; Robert Ball; 'Ross Nelson'; Andrew Martin; 'Branigin, Susan'; 'Kia Gillette'; 'Prince, Greg'; 'Dan Thatcher'  
**Subject:** FHWA Project: Des. No. 1900162; DHPA No 27559; Addendum HPR; Improve 64: I-64 Added Travel Lanes, Floyd County, Indiana  
**Attachments:** I-64\_Added Travel Lanes\_Des 1900162\_addendum RDL\_2022\_5\_9.pdf

Mr. Wood,

**Des. No.: 1900162**

**Project Description:** I-64 added travel lanes project from US 150 to Main Street

**Location:** Georgetown, Lafayette, & New Albany Townships, Floyd County, Indiana

The Indiana Department of Transportation, with funding from the Federal Highway Administration, proposes to proceed with the Improve 64: I-64 added travel lanes project; Des No 1900162.

A Historic Property Report (HPR), Phase 1a archaeology report, and a report distribution letter for this project were originally distributed on January 10, 2022.

An addendum report to the HPR has been prepared in response to the State Historic Preservation Office's (SHPO) February 9, 2022, response to the HPR. The addendum report is ready for review and comment by consulting parties.

Please review this documentation located in IN SCOPE at

<http://erms.indot.in.gov/Section106Documents/> (the Des. No. is the most efficient search term, once in IN SCOPE), and respond with any comments that you may have. If a hard copy of the materials is needed, please respond to this email with your request as soon as you can.

Consulting parties have thirty (30) calendar days from receipt of this information to review and provide comment. Tribal consulting parties may enter the process at any time and are encouraged to respond to this notification with any comments or concerns at their earliest convenience. Tribal contacts may contact Patty Jo Korzeniewski at [pkorzeniewski@indot.in.gov](mailto:pkorzeniewski@indot.in.gov) or Kari-Carmany-George at FHWA at [K.CarmanyGeorge@dot.gov](mailto:K.CarmanyGeorge@dot.gov) or 317-226-5629.

Thank you in advance for your input,

**Alyssa Reynolds**

Architectural Historian  
adreynolds@crai-ky.com

Indiana Office  
201 NW 4th Street, Suite 204  
Evansville, Indiana 47708  
812.253.3009 office  
812.253.3010 fax  
812.549.4503 cell  
<http://www.crai-ky.com>



***Celebrating 39 Years in Business!***



## Alyssa Reynolds

---

**From:** Alyssa Reynolds <adreynolds@crai-ky.com>  
**Sent:** Monday, May 9, 2022 9:07 AM  
**To:** dhpareview  
**Cc:** 'Sharkey, Rachel'; 'Slider, Chad (DNR)'; 'Carpenter, Patrick A'; 'Korzeniewski, Patricia J'; 'Branigin, Susan'; Andrew Martin; 'Ross Nelson'; Robert Ball; 'Prince, Greg'; 'Dan Thatcher'; 'Kia Gillette'  
**Subject:** FHWA Project: Des. No. 1900162; DHPA No 27559; Addendum HPR; Improve 64: I-64 Added Travel Lanes, Floyd County, Indiana  
**Attachments:** I-64\_Added Travel Lanes\_Des 1900162\_Addendum HPR\_2022\_5\_9.pdf; I-64\_Added Travel Lanes\_Des 1900162\_addendum RDL\_2022\_5\_9.pdf

Hello,

Hard copies of the attached will be mailed to you by the end of the week. The DHPA form will follow in a separate email.

Des. No.: 1900162

Project Description: I-64 added travel lanes project from US 150 to Main Street

Location: Georgetown, Lafayette, & New Albany Townships, Floyd County, Indiana

The Indiana Department of Transportation, with funding from the Federal Highway Administration, proposes to proceed with the Improve 64: I-64 added travel lanes project; Des No 1900162.

A Historic Property Report (HPR), Phase 1a archaeology report, and a report distribution letter for this project were originally distributed on January 10, 2022.

An addendum report to the HPR has been prepared in response to the State Historic Preservation Office's (SHPO) February 9, 2022, response to the HPR. The addendum report is ready for review and comment by consulting parties.

Please review this documentation located in IN SCOPE at <http://erms.indot.in.gov/Section106Documents/> (the Des. No. is the most efficient search term, once in IN SCOPE), and respond with any comments that you may have. If a hard copy of the materials is needed, please respond to this email with your request as soon as you can.

Consulting parties have thirty (30) calendar days from receipt of this information to review and provide comment. Tribal consulting parties may enter the process at any time and are encouraged to respond to this notification with any comments or concerns at their earliest convenience. Tribal contacts may contact Patty Jo Korzeniewski at [pkorzeniewski@indot.in.gov](mailto:pkorzeniewski@indot.in.gov) or Kari-Carmany-George at FHWA at [K.CarmanyGeorge@dot.gov](mailto:K.CarmanyGeorge@dot.gov) or 317-226-5629.

Thank you in advance for your input,

**Alyssa Reynolds**  
Architectural Historian  
[adreynolds@crai-ky.com](mailto:adreynolds@crai-ky.com)

Indiana Office  
201 NW 4th Street, Suite 204  
Evansville, Indiana 47708

812.253.3009 office  
812.253.3010 fax  
812.549.4503 cell  
<http://www.crai-ky.com>



***Celebrating 39 Years in Business!***

## Alyssa Reynolds

---

**From:** Alyssa Reynolds <adreynolds@crai-ky.com>  
**Sent:** Monday, May 9, 2022 9:07 AM  
**To:** dhpareview  
**Cc:** 'Sharkey, Rachel'; 'Slider, Chad (DNR)'; 'Carpenter, Patrick A'; 'Korzeniewski, Patricia J'; Andrew Martin; 'Ross Nelson'; Robert Ball; 'Kia Gillette'; 'Prince, Greg'; 'Dan Thatcher'; 'Branigin, Susan'  
**Subject:** FHWA Project: Des. No. 1900162; DHPA No 27559; Addendum HPR; Improve 64: I-64 Added Travel Lanes, Floyd County, Indiana  
**Attachments:** I-64\_Added Travel Lanes\_Des 1900162\_DHPA form\_2022\_5\_9.pdf

Hello,

Attached above is the DHPA form. This will be mailed to you by the end of the week.

Thanks,

**Alyssa Reynolds**  
Architectural Historian  
adreynolds@crai-ky.com

Indiana Office  
201 NW 4th Street, Suite 204  
Evansville, Indiana 47708  
812.253.3009 office  
812.253.3010 fax  
812.549.4503 cell  
<http://www.crai-ky.com>



***Celebrating 39 Years in Business!***



June 8, 2022

Alyssa Reynolds  
CRA, Inc.  
201 NW 4<sup>th</sup> Street, Suite 204  
Evansville, Indiana 47648

Federal Agency: Indiana Department of Transportation (“INDOT”),  
on behalf of Federal Highway Administration, Indiana Division (“FHWA”)

Re: Addendum to the Historic Property Report (Ball, 4/14/2022) for added travel lanes along I-64 and I-265  
(Des. No. 1900162; DHPA No. 27559)

Dear Ms. Reynolds:

Pursuant to Section 106 of the National Historic Preservation Act of 1966, as amended (54 U.S.C. § 306108), 36 C.F.R. Part 800, and the “Programmatic Agreement (PA) Among the Federal Highway Administration, the Indiana Department of Transportation, the Advisory Council on Historic Preservation and the Indiana State Historic Preservation Officer Regarding the Implementation of the Federal Aid Highway Program In the State of Indiana,” the staff of the Indiana State Historic Preservation Officer (“Indiana SHPO”) has reviewed the “Addendum to Historic Property Report for the Proposed Improve 64 Project in Georgetown, Lafayette, and New Albany Townships, Floyd County, Indiana;” which was received by our office on May 9, 2022.

Thank you for providing us with a copy of the addendum to the historic property report. In our previous letter, regarding individual properties, we agreed that the Frank and George Devol Double House at 219-221 Lafayette Street (IHSSI # 043-446-34246), the Horatio Devol House at 225 Lafayette Street (IHSSI # 043-446-34245), the Reyse (Roy[s]ce-Friend House) at 229 W. Spring Street (IHSSI # 043-446-34204), and the James Carr House at 217 W. Spring Street (IHSSI #043-446-34202) are eligible for inclusion in the National Register of Historic Places.

DHPA staff has had an opportunity to review the addendum to the historic property report, providing further information and analysis of sites and districts within the area of potential effects.

In regard to the West End Historic District, we continue to believe that a portion of the district meets the criteria for inclusion in the National Register of Historic Places. The area still retains a good collection of working-class vernacular housing. It seems highly likely that the housing stock catered to families that earned their living from river trades: dock work, warehousing, ship construction or maintenance, or other related jobs. The housing stock includes shotgun cottages, two-thirds I-houses, pyramid-roof cottages, gabled-ell houses, bungalows, and other types. We believe that the district meets Criteria C.

In regard to the Finchland Historic District, we appreciate the research revealing that the developer did not live within the subdivision and agree that Criteria B does not appear to be applicable. However, we believe that the Finchland Historic District meets Criteria A and C.

Furthermore, we concur that Glenview Heights Historic District meets National Register Criteria A. We also concur that Oakwood Hills and Village Pines subdivisions are not eligible for the National Register. We agree that the house at 904 Braevuew (INDOT 23) meets National Register Criteria C.

Except as noted in our specific comments, we concur with the conclusions of National Register eligibility and ineligibility provided in the addendum historic property report.

The Indiana SHPO staff's archaeological reviewer for this project is Rachel Sharkey, the structures reviewer is Chad Slider, and input on National Register eligibility was provided by Paul Diebold. However, if you have a question about the Section 106 process, please contact initially the INDOT Cultural Resources staff members who are assigned to this project.

In all future correspondence about the added travel lanes along I-64 and I-265 in Floyd County (Des. No. 1900162), please refer to DHPA No. 27559.

Very truly yours,



Beth K. McCord  
Deputy State Historic Preservation Officer

BKM:RAS:CWS:ews

emc: Erica Tait, FHWA  
Matt Coon, INDOT  
Susan Branigin, INDOT  
Alyssa Reynolds, Cultural Resource Analysts  
Scott Wood, City of New Albany  
Rachel Sharkey, DNR-DHPA  
Chad Slider, DNR-DHPA  
Paul Diebold, DNR-DHPA

## Alyssa Reynolds

---

**From:** Greg Sekula <GSekula@indianalandmarks.org>  
**Sent:** Thursday, August 18, 2022 8:45 AM  
**To:** Kia Gillette <kgillette@HNTB.com>  
**Cc:** Laura Renwick <LRenwick@indianalandmarks.org>  
**Subject:** Improve 64 Project Consultation

Good morning Kia:

Indiana Landmarks Southern Regional Office is interested in serving as a consulting party for the Section 106 Review connected with this project. My colleague Laura Renwick, who is copied on this e-mail, as well as myself would like to be notified of future meetings. Ed Clere forwarded the Section 106 historic property report links. Our mailing address for any mail correspondence is: 911 State Street, New Albany, IN 47150.

Thank you,

Greg Sekula, AICP  
Southern Regional Director  
Indiana Landmarks  
911 State Street  
New Albany, IN 47150  
812/284-4534

---

*This e-mail and any files transmitted with it are confidential and are intended solely for the use of the individual or entity to whom they are addressed. If you are NOT the intended recipient and receive this communication, please delete this message and any attachments. Thank you.*



# INDIANA DEPARTMENT OF TRANSPORTATION

100 North Senate Avenue  
Room N758-ES

PHONE: (855) 463-6848

**Eric Holcomb, Governor**  
**Michael Smith, Commissioner**

January 3, 2023

This letter was sent to the listed parties.

RE: FHWA Project: Des No 1900162; Improve 64 Project; I-64 Added Travel Lanes from US 150 to Main Street, Floyd County, Indiana

Dear Consulting Party (see attached list),

The Indiana Department of Transportation (INDOT), with funding from the Federal Highway Administration (FHWA), proposes to proceed with the Improve 64; I-64 Added Travel Lanes project along portions of I-64, I-265, and US 150 (Des. No. 1900162) in Floyd County. Cultural Resource Analysts, Inc. (CRA) is under contract with INDOT to advance the environmental documentation for the referenced project.

This letter is part of the Section 106 review process for this project. Section 106 of the National Historic Preservation Act requires federal agencies to take into account the effects of their undertakings on historic and archaeological properties. We are requesting comments from you regarding the possible effects of this project. Please use the above Des. Number and project description in your reply and your comments will be incorporated into the formal environmental study. This study will be conducted in accordance with the National Environmental Policy Act (NEPA). **INDOT and FHWA have not yet determined the NEPA class of action for the project (i.e., Categorical Exclusion, Environmental Assessment, or Environmental Impact Statement).** This determination will be made once more details about the proposed action are defined.

A Section 106 early coordination letter (ECL) was distributed on May 27, 2021. On January 10, 2022, a letter was distributed notifying consulting parties that a Historic Property Report (HPR) and the Archaeological Report (Tribes only) were available for review and comment. On May 9, 2022, an additional letter was distributed notifying consulting parties that an addendum HPR was available for review and comment. An addendum Phase 1a archaeology report and corresponding Effects Report are being submitted in correlation with this letter.

The proposed undertaking is located along I-64 and I-265 in Floyd County, Indiana. A portion of the project is located in the City of New Albany. It is within Georgetown, Lafayette, and New Albany Townships, as shown on the Georgetown, Indiana and New Albany, Indiana USGS Topographic Quadrangles, in Sections 22, 27, 28, 29, 30, 31, 32, 33, and 34 in Township 2 South and Range 6 East, and Sections 2 and 3 in Township 3 South and Range 6 East.

The need for the project is due to existing traffic congestion as demonstrated by poor levels of service (LOS) on the interstate and interchange components, and deteriorating pavement within the project area. The purpose of the project is to reduce congestion and improve the LOS on the interstate and interchange components, and address the deteriorated condition of the pavement.

The project will include work on sections of I-64, I-265, and US 150. The proposed project limits will extend northwest along I-64 for approximately 22,334 feet (4.23 mi) from the I-64 bridge over Main Street in New Albany to the US 150 interchange and along I-265 for approximately 9,240 feet (1.75 mi) north-northeast to approximately the Green Valley Road overpass. The total length of the project is approximately 31,574 feet (5.98 mi). Approximately 1-2 acres of right-of-way (ROW) and drainage easement(s) are anticipated to be acquired for this project.

[www.in.gov/dot/](http://www.in.gov/dot/)

*An Equal Opportunity Employer*



Currently, the project is anticipated to include the following elements:

- Addition of a travel lane in each direction on I-64 from US 150 to 2,000 feet north of Cherry Street. In most areas, the additional lanes will be added to the median where rock excavation will be necessary.
- Addition of an auxiliary lane on eastbound I-265 from I-64 to State Street and a travel lane on eastbound I-265 from I-64 to 4,000 feet east of State Street. The auxiliary lane will be added on the outside and the travel lane added within the median.
- Addition of one lane to all I-64/I-265 interchange ramps and one lane on the I-64 westbound exit ramp to US 150.
- Replacement and/or rehabilitation of pavement on I-64, I-265, and US 150.
- Relocation of the eastbound I-64 to eastbound I-265 ramp within the I-64/I-265 interchange. Construction of a new bridge on eastbound I-64 is required to accommodate the ramp relocation.
- Replacement, widening, and deck rehabilitation of bridges throughout the project area.
- Replacement of culverts and storm sewers, and construction of detention basins
- Installation of guardrail and concrete barrier wall as needed along I-64.
- Replacement and addition of signage, lighting, ITS conduit, and pavement markings.
- Above-ground and underground utility relocations.
- Acquisition of new right-of-way and drainage easement(s).
- Construction of retaining walls at multiple locations to minimize right-of-way acquisition and to accommodate new traffic lanes added within the narrowed median along I-64 between US 150 and the Captain Frank Road overpass, east of the I-265/I-64 system interchange ramps.
- Possible noise barrier construction along I-64 and I-265 pending the results of public involvement in accordance with INDOT's Traffic Noise Analysis Procedure (2022).

As the project continues to develop, minor design changes related to potential culvert work (including access) and stormwater detention along I-64 and I-265, have occurred since the release of the addendum HPR and corresponding letter, sent to consulting parties on May 9, 2022. These design changes have resulted in increases in the project area to make sure potential disturbance has been accounted for during archaeological surveys. The previous project area acreage was 352.3 acres. The minor design changes resulted in an increase of 4.8 acres for an updated total project area of 357.10 acres. However, the project length is the same since the May 9, 2022, release of the addendum HPR and corresponding letter.

The maintenance of traffic (MOT) plan is anticipated to keep the existing number of lanes of traffic in each direction, although intermittent lane restrictions will be implemented on I-64 and I-265. It is also anticipated that Quarry Road, Captain Frank Road, and Cherry Street will be closed for periods during construction of the bridges above, and construction of foundations adjacent to, those roadways. Interchange ramps at the I-64/I-265, I-64/Spring Street, and I-64/State Street interchanges will likely require short term closures. Nighttime closures may be required for construction activities along State Street.

Cultural Resource Analysts, Inc. (CRA) is under contract with INDOT to advance the Section 106 documentation for the referenced project. HNTB Corporation (HNTB) will be completing the environmental documentation for the reference project.

With regard to archaeological resources, an archaeologist who meets the Secretary of the Interior's Professional Qualification Standards identified three sites within the project area. As a result of these efforts, sites (12FL223–12FL224) were recommended not eligible for listing in the National Register of Historic Places (NRHP) and no further work is recommended. However, the NRHP eligibility of Site 12FL222 could not be assessed with the data derived from the Phase 1a and the site may contain intact deposits that could provide important information about the history of New Albany. Therefore, project avoidance or further work to assess its integrity and National Register of Historic Places eligibility is recommended for Site 12FL222 (Travis, 1/5/2022). The original archaeological report's survey area did not include the enlarged survey area for road resurfacing that resulted in slight changes to the survey area's footprint. An addendum Phase 1a archaeology report (Travis, 8/29/22) was completed in response to these



changes. No additional sites were identified as a result of the investigation. The recommendation for Site 12FL222, mentioned above, remains.

No further responses were received regarding the addendum HPR.

David Barksdale, Floyd County Historian, accepted consulting party status on August 9, 2022, after speaking with HNTB personnel at a community advisory committee meeting for the project.

On August 18, 2022, Greg Sekula, from Indiana Landmark's Southern Regional Office accepted consulting party status after emailing HNTB personnel. He stated that he would like to be notified of future meetings associated with this project.

CRA recommends a total of eight resources as eligible for listing in the NRHP for the purposes of the proposed project:

1. Finchland Subdivision;
2. Glenview Heights Subdivision;
3. INDOT 23;
4. Frank and George Devol Double House (IHSSI No. 043-446-34246; "outstanding");
5. Horatio Devol House (IHSSI No. 043-446-34245; "outstanding");
6. James Carr House (IHSSI No. 043-446-34202; "outstanding");
7. Reyse (Roy[s]ce)-Friend House (IHSSI No. 043-446- 34204; "outstanding"); and
8. West End Historic District (IHSSI No. 043-446-08001-182)

The Phase 1a addendum archaeology report and Effects Report are available for review in IN SCOPE at <http://erms.indot.in.gov/Section106Documents/> (the Des. No. is the most efficient search term, once in IN SCOPE). You are invited to review these documents and to respond with comments on any historic resource impacts incurred as a result of this project so that an environmental report can be completed. We also welcome your related opinions and other input to be considered in the preparation of the environmental document. If you prefer a hard-copy of this material, please respond to this email with your request as soon as possible.

Please review the information and comment within thirty (30) calendar days of receipt. If you indicate that you do not desire to be a consulting party or if you have not previously accepted consulting party status and you do not respond to this letter, you will not be included on the list of consulting parties for this project and will not receive further information about the project unless the design changes.

***Tribal Contacts please respond to INDOT's Tribal Liaison, Matt Coon at [mcoon@indot.in.gov](mailto:mcoon@indot.in.gov) (317-697-9752) with any responses pertaining to this project including to provide INDOT/Indiana FHWA additional information about Tribal resources/concerns and questions/comments regarding cultural resources. The FHWA point of contact is Kari Carmany-George at [K.CarmanyGeorge@dot.gov](mailto:K.CarmanyGeorge@dot.gov) (317-226-5629).***

For questions concerning specific project details, you may contact Alyssa Reynolds of Cultural Resource Analysts, Inc. at (812) 253-3009 or [adreynolds@crai-ky.com](mailto:adreynolds@crai-ky.com). All future responses regarding the proposed project should be forwarded to CRA at the following address:

Alyssa Reynolds  
Architectural Historian  
Cultural Resource Analysts, Inc. (CRA)  
201 NW 4th Street, Suite 204  
Evansville, Indiana 47708  
[adreynolds@crai-ky.com](mailto:adreynolds@crai-ky.com)

Sincerely,



Matthew S. Coon, Acting Manager  
Cultural Resources Office

Environmental Services: Aerial View map, Consulting Party Distribution list, and Consulting Party response letters

## **Consulting Party Acceptance List**

**Indiana Department of Natural Resources, Division of Historic Preservation & Archaeology, Indiana State Historic Preservation Office (SHPO)**

**City of New Albany**

**David Barksdale (Floyd County Historian)**

**Greg Sekula (Indiana Landmark's Southern Regional Office)**

**Eastern Shawnee Tribe**

**Peoria Tribe of Indians of Oklahoma**

**\*Responses to the Addendum HPR have been removed to avoid duplication**

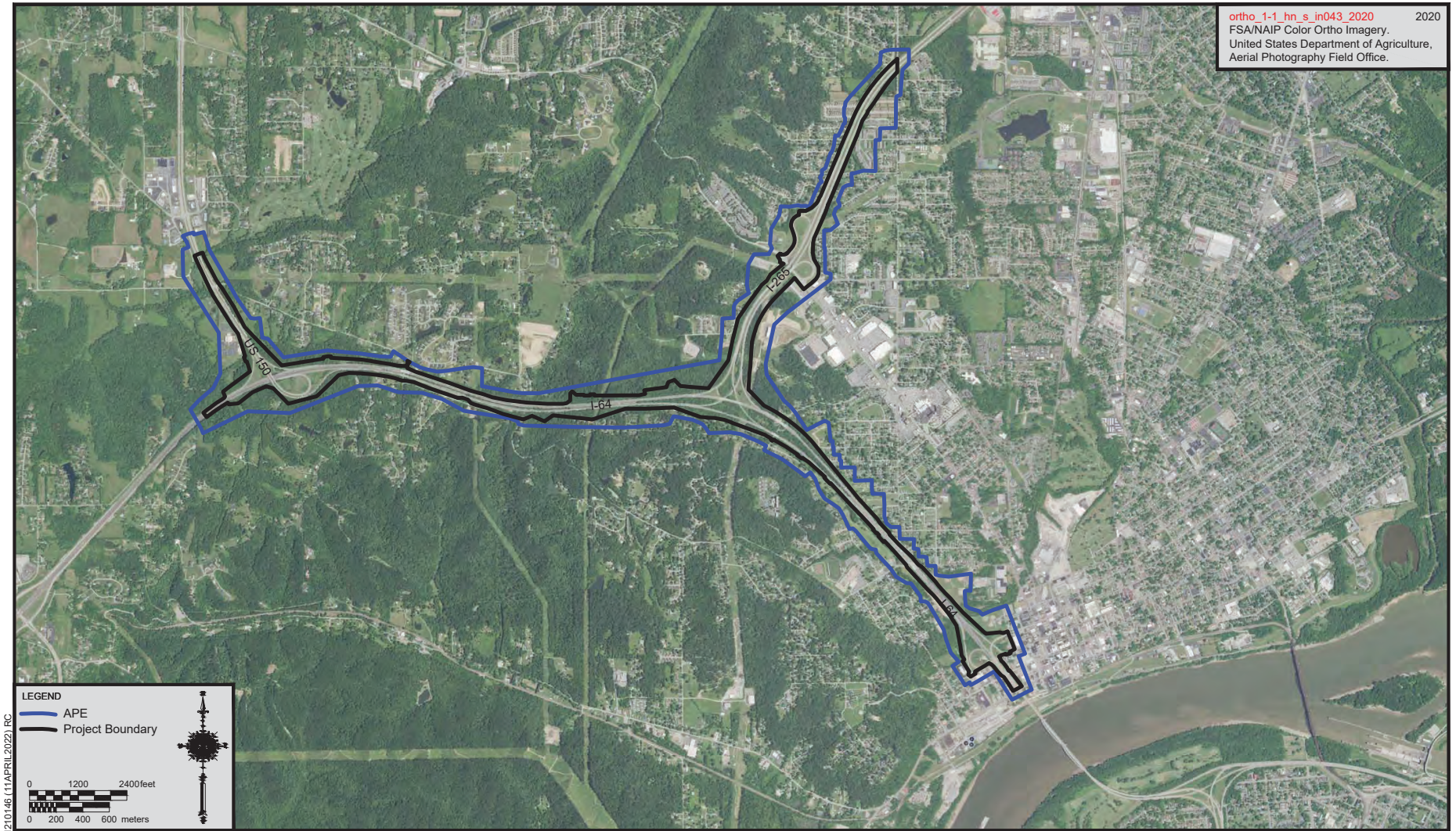


Figure 1. Aerial map showing the location of the proposed project, APE, and surveyed resources.

## Alyssa Reynolds

---

**From:** Alyssa Reynolds <adreynolds@crai-ky.com>  
**Sent:** Tuesday, January 3, 2023 10:34 AM  
**To:** swood@cityofnewalbany.com; gsekula@indianalandmarks.org; dddcbark@aol.com  
**Cc:** 'Coon, Matthew'; 'Branigin, Susan'; Andrew Martin; Elizabeth Heavrin; 'Kia Gillette'; 'Prince, Greg'; 'Dan Thatcher'  
**Subject:** FHWA Project: Des. No. 1900162; DHPA No 27559; Effects Report & Phase 1a Archaeology Addendum Report; Improve 64: I-64 Added Travel Lanes, Floyd County, Indiana  
**Attachments:** I-64\_Added Travel Lanes\_Des 1900162\_addendum RDL\_2023\_1\_3.pdf

All,

**Des. No.: 1900162**

**Project Description:** I-64 added travel lanes project from US 150 to Main Street

**Location:** Georgetown, Lafayette, & New Albany Townships, Floyd County, Indiana

The Indiana Department of Transportation, with funding from the Federal Highway Administration, proposes to proceed with the Improve 64: I-64 added travel lanes project; Des No 1900162.

The Section 106 Early Coordination Letter for this project was originally distributed on May 27, 2021. Additionally, a Historic Property Report (HPR) was distributed on January 10, 2022. An addendum report to the HPR was distributed on May 9, 2022.

As part of Section 106 of the National Historic Preservation Act, an Effects Report and a Phase 1a archaeology addendum report have been prepared and are ready for review and comment by consulting parties.

Please review this documentation located in IN SCOPE at

<http://erms.indot.in.gov/Section106Documents/> (the Des. No. is the most efficient search term, once in IN SCOPE), and respond with any comments that you may have. If a hard copy of the materials is needed, please respond to this email with your request within seven (7) days.

Consulting parties have thirty (30) calendar days from receipt of this information to review and provide comment. Therefore, if we do not receive a response within thirty (30) days, your agency or organization will not receive any further information on the project unless the scope of work changes.

***Tribal Contacts please respond to INDOT's Acting Tribal Liaison, Matt Coon at [mcoon@indot.IN.gov](mailto:mcoon@indot.IN.gov) (317-697-9752) with any responses pertaining to this project including to provide INDOT/Indiana FHWA additional information about Tribal resources/concerns and questions/comments regarding cultural resources. The FHWA point of contact is Kari Carmany-George at [K.CarmanyGeorge@dot.gov](mailto:K.CarmanyGeorge@dot.gov) (317-226-5629).***

Thank you in advance for your input,

**Alyssa Reynolds**

Architectural Historian  
adreynolds@crai-ky.com

Indiana Office  
201 NW 4th Street, Suite 204  
Evansville, Indiana 47708  
812.253.3009 office  
812.253.3010 fax

812.549.4503 cell  
<http://www.crai-ky.com>



***Celebrating 39 Years in Business!***

## Alyssa Reynolds

---

**From:** Alyssa Reynolds <adreynolds@crai-ky.com>  
**Sent:** Tuesday, January 3, 2023 10:39 AM  
**To:** dhpareview  
**Cc:** 'Coon, Matthew'; 'Branigin, Susan'; Elizabeth Heavrin; Andrew Martin; 'Kia Gillette'; 'Dan Thatcher'  
**Subject:** FHWA Project: Des. No. 1900162; DHPA No 27559; Effects Report & Phase 1a Archaeology Addendum Report; Improve 64: I-64 Added Travel Lanes, Floyd County, Indiana  
**Attachments:** I-64\_Added Travel Lanes\_Des 1900162\_addendum RDL\_2023\_1\_3.pdf; I-64\_Improvements\_Des 1900162\_addendum archaeology report\_2023\_1\_3.pdf; I-64\_Added Travel Lanes\_Des 1900162\_DHPA form.pdf

All,

Hard copies of the attached documents will be mailed to you by the end of the week. A second email will follow this one with the Effects Report.

**Des. No.: 1900162**

**Project Description:** I-64 added travel lanes project from US 150 to Main Street

**Location:** Georgetown, Lafayette, & New Albany Townships, Floyd County, Indiana

The Indiana Department of Transportation, with funding from the Federal Highway Administration, proposes to proceed with the Improve 64: I-64 added travel lanes project; Des No 1900162.

The Section 106 Early Coordination Letter for this project was originally distributed on May 27, 2021. Additionally, a Historic Property Report (HPR) was distributed on January 10, 2022. An addendum report to the HPR was distributed on May 9, 2022.

As part of Section 106 of the National Historic Preservation Act, an Effects Report and a Phase 1a archaeology addendum report have been prepared and are ready for review and comment by consulting parties.

Please review this documentation located in IN SCOPE at

<http://erms.indot.in.gov/Section106Documents/> (the Des. No. is the most efficient search term, once in IN SCOPE), and respond with any comments that you may have. If a hard copy of the materials is needed, please respond to this email with your request within seven (7) days.

Consulting parties have thirty (30) calendar days from receipt of this information to review and provide comment. Therefore, if we do not receive a response within thirty (30) days, your agency or organization will not receive any further information on the project unless the scope of work changes.

**Tribal Contacts please respond to INDOT's Acting Tribal Liaison, Matt Coon at [mcoon@indot.IN.gov](mailto:mcoon@indot.IN.gov) (317-697-9752)** with any responses pertaining to this project including to provide INDOT/Indiana FHWA additional information about Tribal resources/concerns and questions/comments regarding cultural resources. The FHWA point of contact is Kari Carmany-George at [K.CarmanyGeorge@dot.gov](mailto:K.CarmanyGeorge@dot.gov) (317-226-5629).

Thank you in advance for your input,

**Alyssa Reynolds**  
Architectural Historian  
adreynolds@crai-ky.com

Indiana Office  
201 NW 4th Street, Suite 204  
Evansville, Indiana 47708  
812.253.3009 office  
812.253.3010 fax  
812.549.4503 cell  
<http://www.crai-ky.com>



***Celebrating 39 Years in Business!***

## Alyssa Reynolds

---

**From:** Alyssa Reynolds <adreynolds@crai-ky.com>  
**Sent:** Tuesday, January 3, 2023 10:41 AM  
**To:** dhpareview  
**Cc:** 'Coon, Matthew'; 'Branigin, Susan'; 'Kia Gillette'; 'Dan Thatcher'; Andrew Martin; Elizabeth Heavrin  
**Subject:** FHWA Project: Des. No. 1900162; DHPA No 27559; Effects Report & Phase 1a Archaeology Addendum Report; Improve 64: I-64 Added Travel Lanes, Floyd County, Indiana, Part 2  
**Attachments:** I-64\_Added Travel Lanes\_Des 1900162\_ER\_2023\_1\_3.pdf

All,

Please find attached above the Effects Report for this project. A hard copy will be mailed to you by the end of the week.

Thank you,

**Alyssa Reynolds**  
Architectural Historian  
adreynolds@crai-ky.com

Indiana Office  
201 NW 4th Street, Suite 204  
Evansville, Indiana 47708  
812.253.3009 office  
812.253.3010 fax  
812.549.4503 cell  
<http://www.crai-ky.com>



***Celebrating 39 Years in Business!***



## Alyssa Reynolds

---

**From:** Branigin, Susan <SBranigin@indot.IN.gov>  
**Sent:** Tuesday, January 3, 2023 12:11 PM  
**To:** thpo@estoo.net; cechohawk@peoriatribe.com  
**Cc:** Carmany-George, Karstin (FHWA); Coon, Matthew; Branigin, Susan; 'Alyssa Reynolds'  
**Subject:** FHWA Project: Des. No. 1900162; DHPA No 27559; Effects Report & Phase 1a Archaeology Addendum Report; Improve 64: I-64 Added Travel Lanes, Floyd County, Indiana  
**Attachments:** I-64\_Added Travel Lanes\_Des 1900162\_addendum RDL\_2023\_1\_3.pdf

**Dear Consulting Parties:**

**Des. No.: 1900162**

**Project Description:** I-64 added travel lanes project from US 150 to Main Street

**Location:** Georgetown, Lafayette, & New Albany Townships, Floyd County, Indiana

The Indiana Department of Transportation, with funding from the Federal Highway Administration, proposes to proceed with the Improve 64: I-64 added travel lanes project; Des No 1900162.

The Section 106 Early Coordination Letter for this project was originally distributed on May 27, 2021. Additionally, a Historic Property Report (HPR) was distributed on January 10, 2022. An addendum report to the HPR was distributed on May 9, 2022.

As part of Section 106 of the National Historic Preservation Act, an Effects Report and a Phase 1a archaeology addendum report have been prepared and are ready for review and comment by consulting parties.

Please review this documentation located in IN SCOPE at

<http://erms.indot.in.gov/Section106Documents/> (the Des. No. is the most efficient search term, once in IN SCOPE), and respond with any comments that you may have. If a hard copy of the materials is needed, please respond to this email with your request within seven (7) days.

Consulting parties have thirty (30) calendar days from receipt of this information to review and provide comment. Therefore, if we do not receive a response within thirty (30) days, your agency or organization will not receive any further information on the project unless the scope of work changes.

**Tribal Contacts please respond to INDOT's Acting Tribal Liaison, Matt Coon at [mcoon@indot.IN.gov](mailto:mcoon@indot.IN.gov) (317-697-9752) with any responses pertaining to this project including to provide INDOT/Indiana FHWA additional information about Tribal resources/concerns and questions/comments regarding cultural resources. The FHWA point of contact is Kari Carmany-George at [K.CarmanyGeorge@dot.gov](mailto:K.CarmanyGeorge@dot.gov) (317-226-5629).**

Thank you in advance for your input,

**Susan R. Branigin**

*History Unit Team Lead*

*Cultural Resources Office*

*Environmental Services*

100 N. Senate Ave., Rm. N758-ES

Indianapolis IN 46204

Office: 317.417.1622

Email: [sbranigin@indot.in.gov](mailto:sbranigin@indot.in.gov)

Work Hours: M-F\_7:30 a.m.-3:30 p.m.



**\*\*For the latest updates from INDOT's Cultural Resources Office, subscribe to the Environmental Services listserv: <https://www.in.gov/indot/3217.htm>**

**\*\*Link to the CRO-Public Web Map App can be found [here](#)**



January 17, 2023

Alyssa Reynolds  
CRA, Inc.  
201 NW 4<sup>th</sup> Street, Suite 204  
Evansville, Indiana 47648

Federal Agency: Indiana Department of Transportation (“INDOT”),  
on behalf of Federal Highway Administration, Indiana Division (“FHWA”)

Re: Effects Report and Indiana Archaeological Short Report (Travis, 10/21/2022) for added travel  
lanes along I-64 and I-265 (Des. No. 1900162; DHPA No. 27559)

Dear Ms. Reynolds:

Pursuant to Section 106 of the National Historic Preservation Act of 1966, as amended (54 U.S.C. § 306108), 36 C.F.R. Part 800, and the “Programmatic Agreement (PA) Among the Federal Highway Administration, the Indiana Department of Transportation, the Advisory Council on Historic Preservation and the Indiana State Historic Preservation Officer Regarding the Implementation of the Federal Aid Highway Program In the State of Indiana,” the staff of the Indiana State Historic Preservation Officer (“Indiana SHPO”) has reviewed your January 3, 2023, submission and archaeology short report received by our office the same day, for this project in Georgetown, Lafayette and New Albany townships, Floyd County, Indiana.

In terms of archaeological resources, thank you for the submission of the archaeological reconnaissance report (Travis 10/21/2022). A review of the report indicates that the survey did not locate any newly recorded archaeological sites or evidence for intact buried archaeological deposits. As previously indicated (Travis 1/5/2022) the recommendation of project avoidance or further work to access the integrity and NRHP eligibility for site 12-FI-0222, still stands. Please be advised that archaeological resources may exist underneath modern development. During construction, work crews should be alert to the possible presence of archaeological artifacts (e.g., ceramics, glass, bone, stone tools, etc.) and features (e.g., foundations, cisterns, privies, etc.) that may be encountered during construction.

If any prehistoric or historic archaeological artifacts or human remains are uncovered during construction, demolition, or earthmoving activities, state law (Indiana Code 14-21-1-27 and -29) requires that the discovery be reported to the Indiana SHPO within two (2) business days. In that event, please call (317) 232-1646. Be advised that adherence to Indiana Code 14-21-1-27 and -29 does not obviate the need to adhere to applicable federal statutes and regulations, including but not limited to 36 C.F.R. Part 800.

In regard to historic structures in the area of potential effects, we previously agreed that the Frank and George Devol Double House at 219-221 Lafayette Street (IHSSI # 043-446-34246), the Horatio Devol House at 225 Lafayette Street (IHSSI # 043-446-34245), the Reyse (Roy[s]ce-Friend House) at 229 W. Spring Street (IHSSI # 043-446-34204), and the James Carr House at 217 W. Spring Street (IHSSI #043-446-34202) are eligible for inclusion in the National Register of Historic Places. Furthermore, after consideration of the Addendum to the Historic Property Report (Ball, 4/14/2022), we restated our belief

that the West End Historic District and Finchland Historic District meet the criteria of eligibility for inclusion in the National Register. Additionally, we agreed that the house at 904 Braeview (INDOT 23), and the Glenview Heights Historic District are National Register eligible; and that the Oakwood Hills and Village Pines subdivisions are not eligible for the National Register.

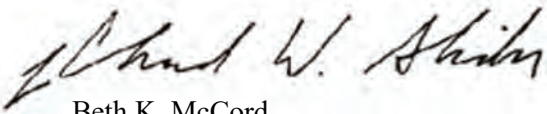
We appreciate your discussion of potential effects on each historic property. We agree with the conclusions of the Effects Report that based on the detailed analysis of factors including tree and brush clearing, lighting, blasting, noise and vibration; the project does not appear to diminish or adversely affect the characteristics that make the identified historic properties eligible for inclusion in the National Register of Historic Places.

Unless another consulting party expresses a different opinion about this project's effects, it might now be appropriate to ask INDOT for a finding.

The Indiana SHPO staff's archaeological reviewer for this project is Melody Pope, the structures reviewer is Chad Slider, and input on National Register eligibility was provided by Paul Diebold. However, if you have a question about the Section 106 process, please contact initially the INDOT Cultural Resources staff members who are assigned to this project.

In all future correspondence about the added travel lanes along I-64 and I-265 project in Floyd County (Des. No. 1900162), please refer to DHPA No. 27559.

Very truly yours,



Beth K. McCord  
Deputy State Historic Preservation Officer

BKM:MKP:CWS:cws

emc: Erica Tait, FHWA  
Matt Coon, INDOT  
Susan Branigin, INDOT  
Alyssa Reynolds, CRA Inc.  
Andrew V. Martin, CRA Inc.  
Scott Wood, City of New Albany  
Chad Slider, DNR-DHPA  
Paul Diebold, DNR-DHPA  
Melody Pope, DNR-DHPA



**EASTERN SHAWNEE  
CULTURAL PRESERVATION DEPARTMENT**

70500 East 128 Road, Wyandotte, OK 74370

January 24, 2023

INDOT - Indiana Department of Transportation  
100 N. Senate Ave. IGCN642  
Indianapolis, IN 46201

**RE: Des No. 1900162, DHPA No. 27559, Floyd County, Indiana**

Dear Mr. Coon,

The Eastern Shawnee Tribe has received your letter regarding the above referenced project(s) within Floyd County, Indiana. The Eastern Shawnee Tribe is committed to protecting sites important to Tribal Heritage, Culture and Religion. Furthermore, the Tribe is particularly concerned with historical sites that may contain but not limited to the burial(s) of human remains and associated funerary objects.

As described in your correspondence, and upon research of our database(s) and files, we find our people occupied these areas historically and/or prehistorically. However, the project proposes **NO Adverse Effect** or endangerment to known sites of interest to the Eastern Shawnee Tribe. Please continue project as planned. However, should this project inadvertently discover an archeological site or object(s) we request that you immediately contact the Eastern Shawnee Tribe, as well as the appropriate state agencies (within 24 hours). We also ask that all ground disturbing activity stop until the Tribe and State agencies are consulted. Please note that any future changes to this project will require additional consultation.

In accordance with the NHPA of 1966 (16 U.S.C. § 470-470w-6), federally funded, licensed, or permitted undertakings that are subject to the Section 106 review process must determine effects to significant historic properties. As clarified in Section 101(d)(6)(A-B), historic properties may have religious and/or cultural significance to Indian Tribes. Section 106 of NHPA requires Federal agencies to consider the effects of their actions on all significant historic properties (36 CFR Part 800) as does the National Environmental Policy Act of 1969 (43 U.S.C. § 4321-4347 and 40 CFR § 1501.7(a)). This letter evidences NHPA and NEPA historic properties compliance pertaining to consultation with this Tribe regarding the referenced proposed projects.

Thank you, for contacting the Eastern Shawnee Tribe, we appreciate your cooperation. Should you have any further questions or comments please contact our Office.

Sincerely,

Paul Barton, Tribal Historic Preservation Officer (THPO)  
Eastern Shawnee Tribe of Oklahoma  
(918) 666-5151 Ext:1833  
THPO@estoo.net

## Alyssa Reynolds

---

**From:** Coon, Matthew <mcoon@indot.IN.gov>  
**Sent:** Thursday, February 2, 2023 8:55 AM  
**To:** thpo@estoo.net; Burgundy Fletcher  
**Cc:** Carmany-George, Karstin (FHWA); Branigin, Susan; 'Alyssa Reynolds'; Kia Gillette - HNTB Corporation (kgillette@hntb.com); Dan Thatcher; Christine Meador  
**Subject:** FHWA Project: Des. No. 1900162; DHPA No 27559; Addendum HPR; Improve 64: I-64 Added Travel Lanes, Floyd County, Indiana  
**Attachments:** I-64\_Added Travel Lanes\_Des 1900162\_addendum RDL\_2022\_5\_9.pdf

**Des. No.:** 1900162

**Project Description:** I-64 added travel lanes project from US 150 to Main Street

**Location:** Georgetown, Lafayette, & New Albany Townships, Floyd County, Indiana

The Indiana Department of Transportation, with funding from the Federal Highway Administration, proposes to proceed with the Improve 64: I-64 added travel lanes project; Des No 1900162. The project area may be viewed online at <https://arcg.is/jqueP> (the Des. No. is the most efficient search term once in the CRO - Public Web Map App).

The Section 106 Early Coordination Letter for this project was originally distributed on May 27, 2021. A Historic Property Report (HPR), Phase 1a archaeology report, and a report distribution letter for this project were originally distributed on January 10, 2022. An Effects Report and addendum Phase 1a archaeology report were distributed on January 3, 2023.

As part of Section 106 of the National Historic Preservation Act, an addendum HPR was prepared and distributed to consulting parties on May 9, 2022. However, we are unable to find documentation that tribal consulting parties were notified at that time. We apologize for this apparent oversight, and we also apologize if you are receiving a second notification about this document.

We invite you to review the addendum HPR located in IN SCOPE at <https://erms12c.indot.in.gov/Section106Documents/> (the Des. No. is the most efficient search term, once in IN SCOPE), and respond with any comments that you may have. Consulting parties have thirty (30) calendar days from receipt of this information to review and provide comment.

**Tribal Contacts please respond to INDOT's Acting Tribal Liaison, Matt Coon at [mcoon@indot.IN.gov](mailto:mcoon@indot.IN.gov) (317-697-9752) with any responses pertaining to this project including to provide INDOT/Indiana FHWA additional information about Tribal resources/concerns and questions/comments regarding cultural resources. The FHWA point of contact is Kari Carmany-George at [K.CarmanyGeorge@dot.gov](mailto:K.CarmanyGeorge@dot.gov) (317-226-5629).**

Thank you in advance for your input,

### **Matt Coon**

*Acting Manager, Cultural Resources Office*

*Archaeology Team Lead*

*Acting Tribal Liaison*

Environmental Services

Indiana Department of Transportation

100 North Senate Ave., N758-ES

Indianapolis, IN 46204

Phone: 317-697-9752



**EASTERN SHAWNEE  
CULTURAL PRESERVATION DEPARTMENT**

70500 East 128 Road, Wyandotte, OK 74370

March 13, 2023

INDOT - Indiana Department of Transportation  
100 N. Senate Ave. IGCN642  
Indianapolis, IN 46201

**RE: Des No. 1900162, DHPA No. 27559, Floyd County, Indiana**

Dear Mr. Coon,

The Eastern Shawnee Tribe has received your letter regarding the above referenced project(s) within Floyd County, Indiana. The Eastern Shawnee Tribe is committed to protecting sites important to Tribal Heritage, Culture and Religion. Furthermore, the Tribe is particularly concerned with historical sites that may contain but not limited to the burial(s) of human remains and associated funerary objects.

As described in your correspondence, and upon research of our database(s) and files, we find our people occupied these areas historically and/or prehistorically. However, the project proposes **NO Adverse Effect** or endangerment to known sites of interest to the Eastern Shawnee Tribe. Please continue project as planned. However, should this project inadvertently discover an archeological site or object(s) we request that you immediately contact the Eastern Shawnee Tribe, as well as the appropriate state agencies (within 24 hours). We also ask that all ground disturbing activity stop until the Tribe and State agencies are consulted. Please note that any future changes to this project will require additional consultation.

In accordance with the NHPA of 1966 (16 U.S.C. § 470-470w-6), federally funded, licensed, or permitted undertakings that are subject to the Section 106 review process must determine effects to significant historic properties. As clarified in Section 101(d)(6)(A-B), historic properties may have religious and/or cultural significance to Indian Tribes. Section 106 of NHPA requires Federal agencies to consider the effects of their actions on all significant historic properties (36 CFR Part 800) as does the National Environmental Policy Act of 1969 (43 U.S.C. § 4321-4347 and 40 CFR § 1501.7(a)). This letter evidences NHPA and NEPA historic properties compliance pertaining to consultation with this Tribe regarding the referenced proposed projects.

Thank you, for contacting the Eastern Shawnee Tribe, we appreciate your cooperation. Should you have any further questions or comments please contact our Office.

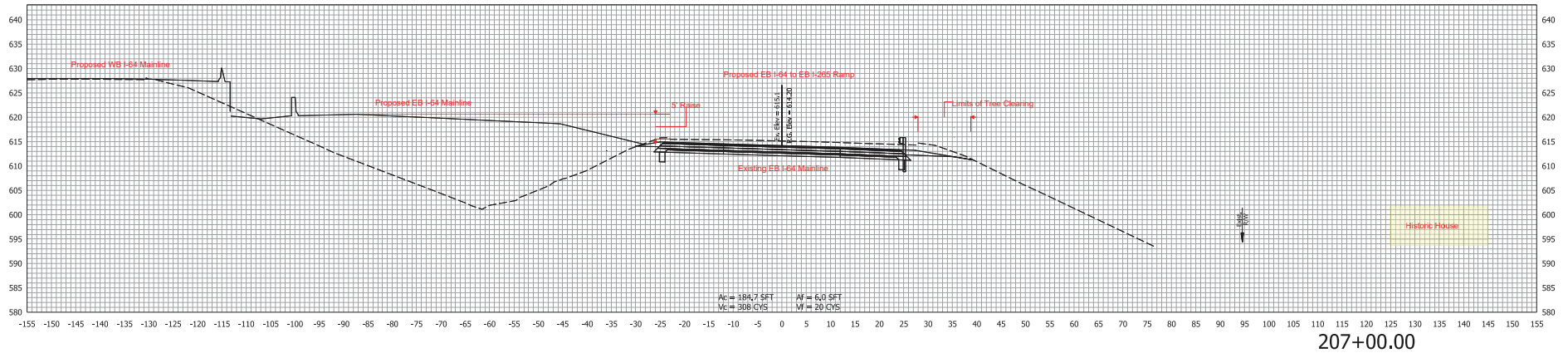
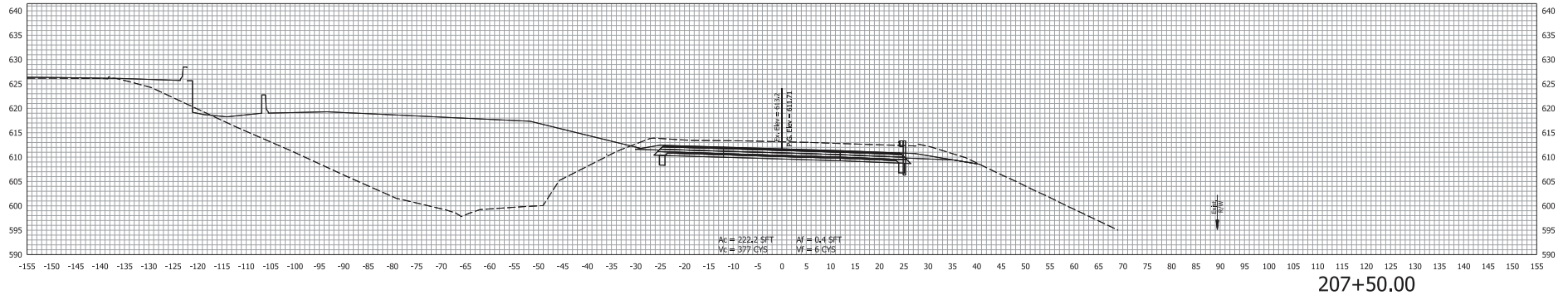
Sincerely,

Paul Barton, Tribal Historic Preservation Officer (THPO)  
Eastern Shawnee Tribe of Oklahoma  
(918) 666-5151 Ext:1833  
THPO@estoo.net

# APPENDIX E: Plans



# Cross Section for the Project Near INDOT 23



**DRAFT**  
NOT FOR CONSTRUCTION

RECOMMENDED FOR APPROVAL _____	DESIGN ENGINEER _____	DATE _____
DESIGNED: DFK	DRAWN: DTC	
CHECKED: ADR	CHECKED: ADR	

INDIANA  
DEPARTMENT OF TRANSPORTATION  
I-64 EB RAMP TO I-265 EB  
LINE "PR-AE1"  
ROADWAY CROSS SECTIONS

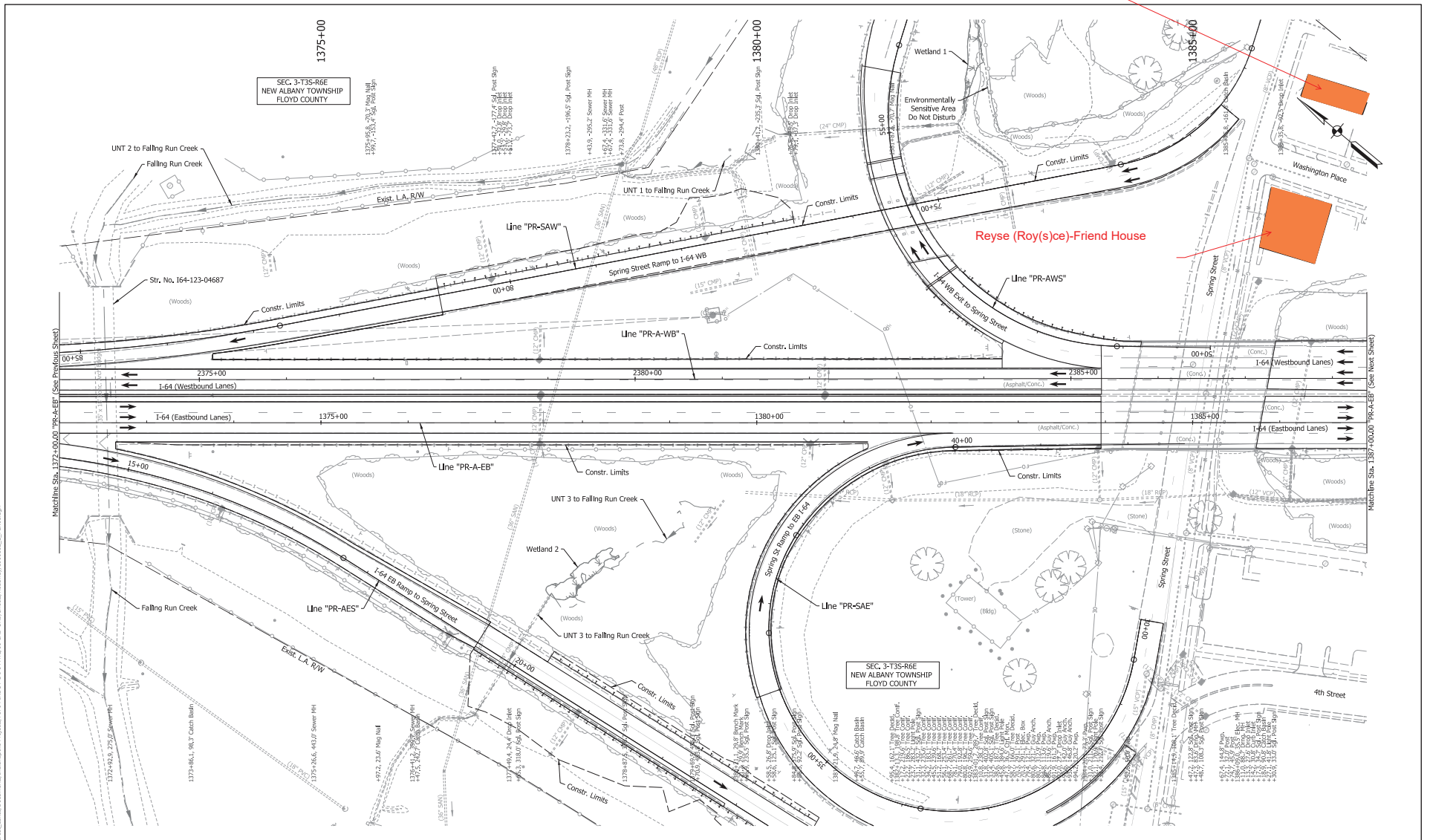
HORIZONTAL SCALE	BRIDGE FILE
1"=10'	N/A
VERTICAL SCALE	DESIGNATION
1"=10'	1900162
SURVEY BOOK	SHEETS XS-473
ELECTRONIC	975 of 1131
CONTRACT	PROJECT
R-4E270	1900162

# Plan View of the Project Near INDOT 23



James Carr House

Reyse (Roy(s)ce)-Friend House



Note:  
For Geometric information see Geometric Layout Sheets  
GEO-01 to GEO-13.

Historic Property  
Boundary

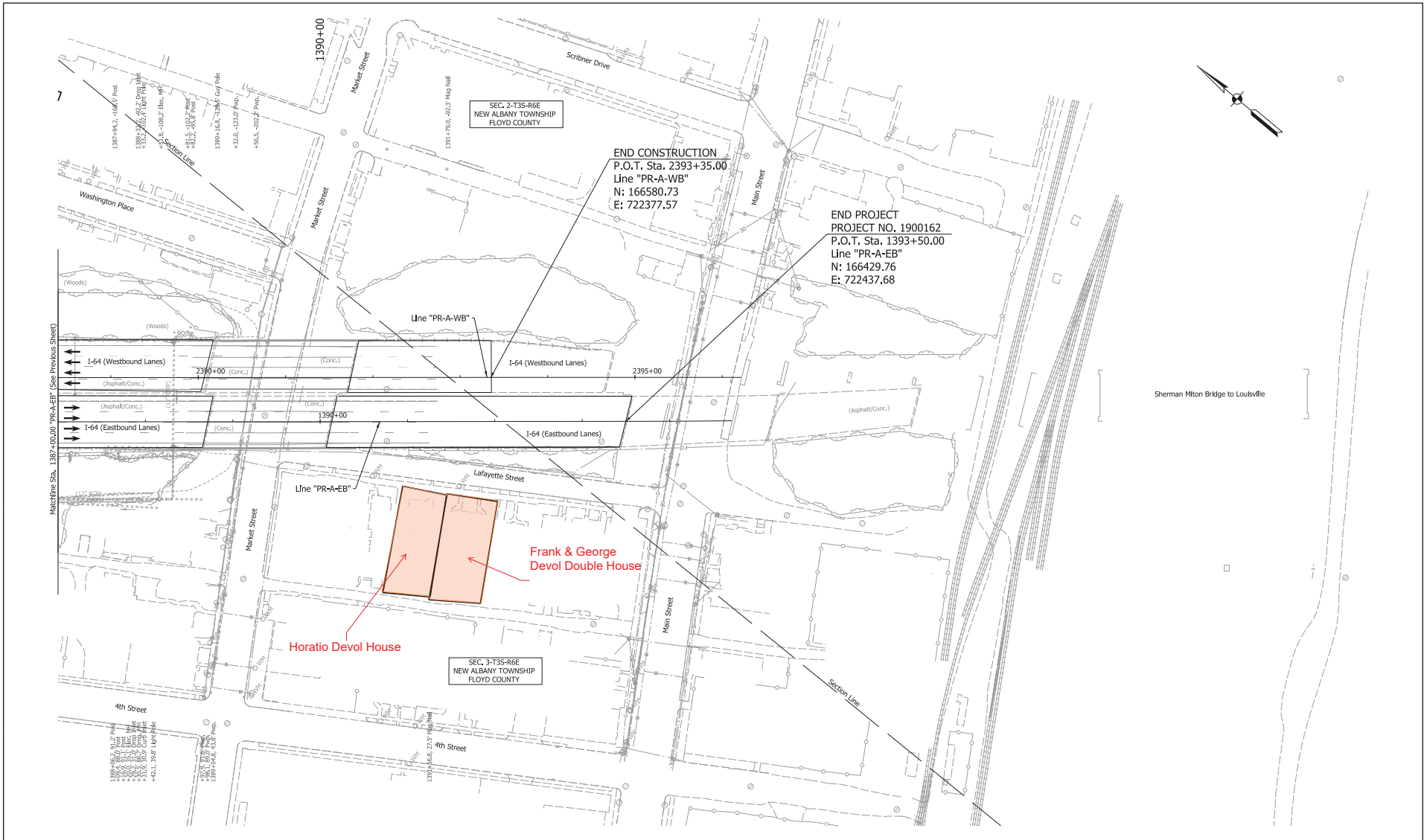
**DRAFT**  
NOT FOR CONSTRUCTION

RECOMMENDED FOR APPROVAL	DESIGN ENGINEER	DATE
DESIGNED: SQM	DRAWING: BJS	
CHECKED: KRC	CHECKED: KRC	

INDIANA DEPARTMENT OF TRANSPORTATION
PLAN SHEET LINE "PR-A-EB" - STA. 1372+00 TO STA. 1387+00 LINE "PR-A-WB" - STA. 2372+00 TO STA. 2387+00

HORIZONTAL SCALE	BRIDGE FILE
1"=50'	N/A
VERTICAL SCALE	DESIGNATION
N/A	1900162
SURVEY BOOK	SHEETS
ELECTRONIC	PLN-14
CONTRACT	of 1131
R-4E270	PROJECT
	1900162

8/23/2022 12:24:28 PM  
 File Path: I:\Projects\1900162\1900162\_S1.dwg  
 User: jkelly



Note:  
For Geometric information see Geometric Layout Sheets  
GEO-01 to GEO-13.

Historic Property  
Boundary

**DRAFT**  
NOT FOR CONSTRUCTION

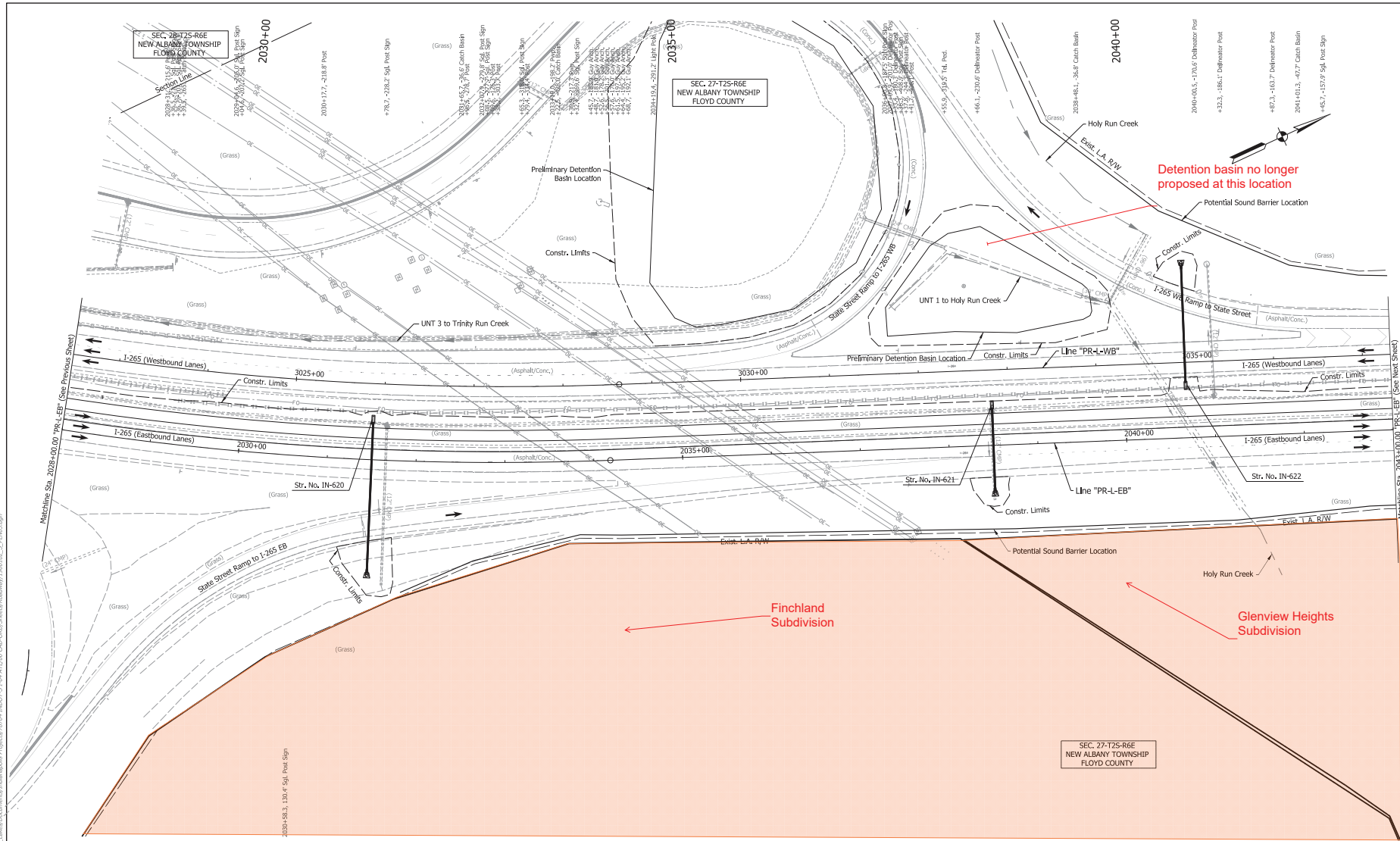
RECOMMENDED FOR APPROVAL		DESIGN ENGINEER	DATE
DESIGNED: SQM	DRAWN: BJS		
CHECKED: KRC	CHECKED: KRC		

**INDIANA  
DEPARTMENT OF TRANSPORTATION**

**PLAN SHEET**  
LINE "PR-A-EB" - STA. 1387+00 TO STA. 1393+50.00  
LINE "PR-A-WB" - STA. 2387+00 TO STA. 2393+35.00

HORIZONTAL SCALE	BRIDGE FILE
1"=50'	N/A
VERTICAL SCALE	DESIGNATION
N/A	1900162
SURVEY BOOK	SHEETS
ELECTRONIC	PLN-15
CONTRACT	272 of 1131
R-4E370	PROJECT
	1900162

8/23/2021 12:24:40 PM  
 File Path: \\pww\cadd\1900162\_S\1900162\_S\_Plan.dgn  
 Project: \\pww\cadd\1900162\_S\1900162\_S\_Plan.dgn



Detention basin no longer proposed at this location

Finchland Subdivision

Glenview Heights Subdivision

Note:  
For Geometric information see Geometric Layout Sheets  
GEO-01 to GEO-13.

Historic Property Boundary

**DRAFT**  
NOT FOR CONSTRUCTION

RECOMMENDED FOR APPROVAL	DESIGN ENGINEER	DATE
DESIGNED: MDS	DRAWING: BJS	
CHECKED: KRC	CHECKED: KRC	

INDIANA  
DEPARTMENT OF TRANSPORTATION

PLAN SHEET  
LINE "PR-L-EB"  
STA. 2028+00 TO STA. 2043+00

HORIZONTAL SCALE	BRIDGE FILE
1"=50'	N/A
VERTICAL SCALE	DESIGNATION
N/A	1900162
SURVEY BOOK	SHEETS
ELECTRONIC	285 of 1131
CONTRACT	PROJECT
R-4E270	1900162